

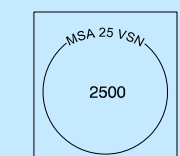
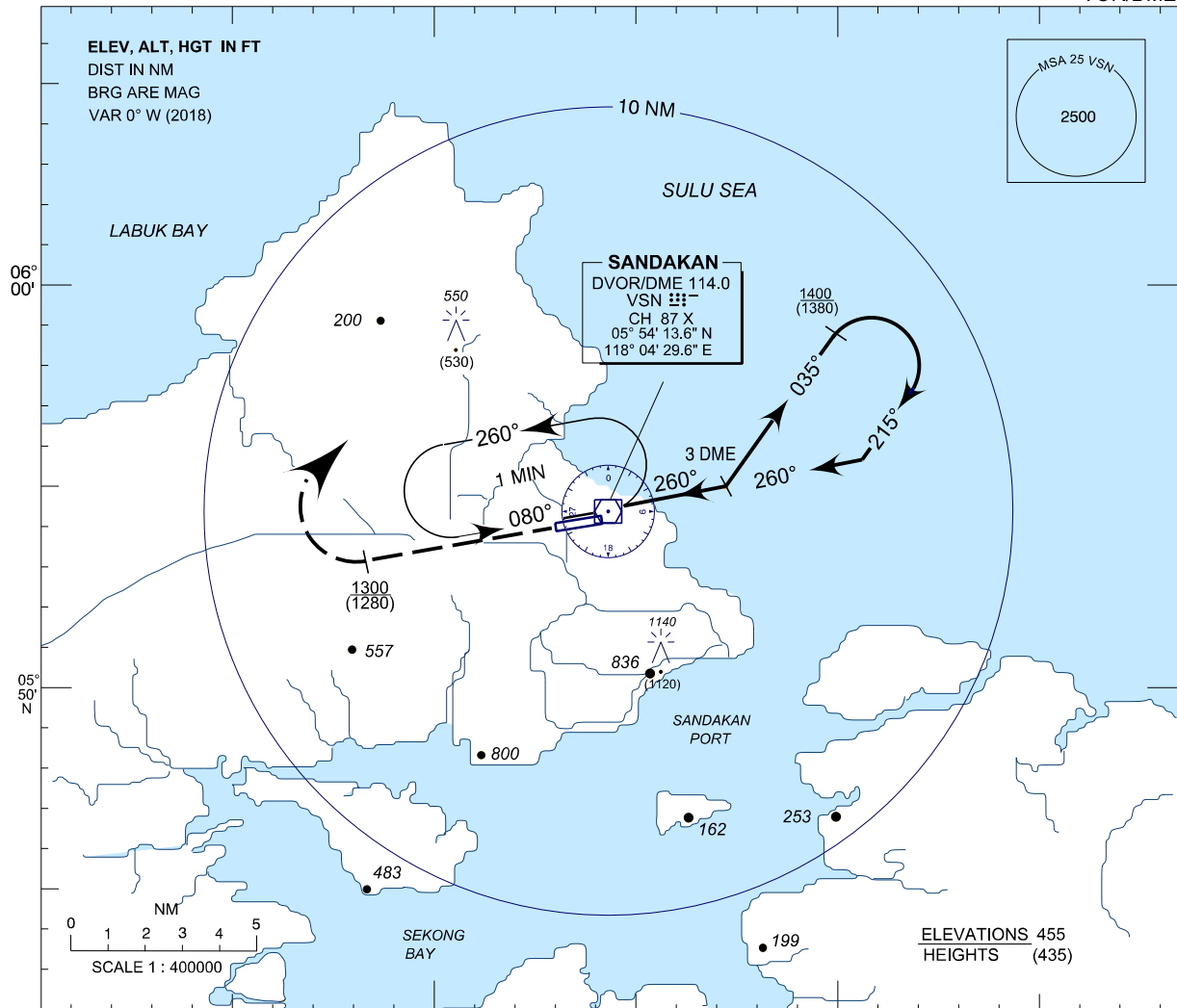
**INSTRUMENT
APPROACH
CHART - ICAO**

AERODROME ELEV 46FT
HEIGHT RELATED TO
THR RWY 26 - ELEV 20FT

SMC 121.9
TWR 122.05
APP 123.2
ATIS 128.2

**SANDAKAN/SANDAKAN
(WBKS)
RWY 26**

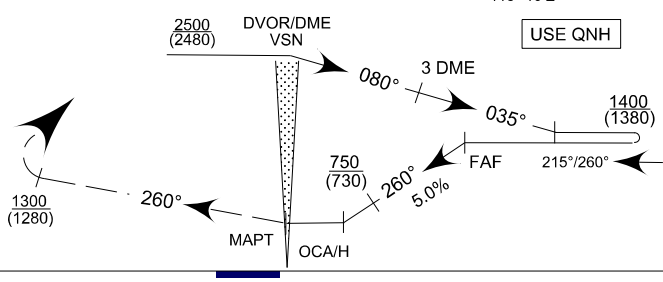
VOR/DME



TRANSITION LEVEL : FL130
TRANSITION ALT : 11000FT

USE QNH

MISSED APPROACH
AT MAPT CLIMB ON 260° TO
1300(1280) OR ABOVE,
TURN RIGHT AND RETURN
TO HOLDING PATTERN OR
AS DIRECTED BY ATC.



ELEV 20FT
THR RWY 26

NM FROM VOR 5 4 3 2 1 0 1 2 3 4 5

OCA (OCH)				
CATEGORY OF AIRCRAFT	A	B	C	D
VOR/DME	400 (380) / 0.75 DME			
CIRCLING	500 (480)		1400 (1380)	
CAUTION	RIGHT HAND CIRCLING ONLY			

TIME TO THRESHOLD RUNWAY 26 FROM FAF DISTANCE 4.5 NAUTICAL MILES						
GROUND SPEED (KNOTS)	70	90	120	150	180	210
MINUTES: SECONDS	4:00	3:00	2:15	1:48	1:30	1:17
5.0% DESCENT(FT/MIN)	337	450	600	750	900	1055

CHANGES : CHANGE VOR TO DVOR
REMOVE NDB SYMBOL FROM THE CHART