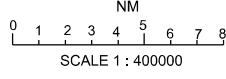
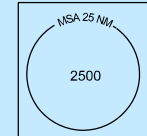
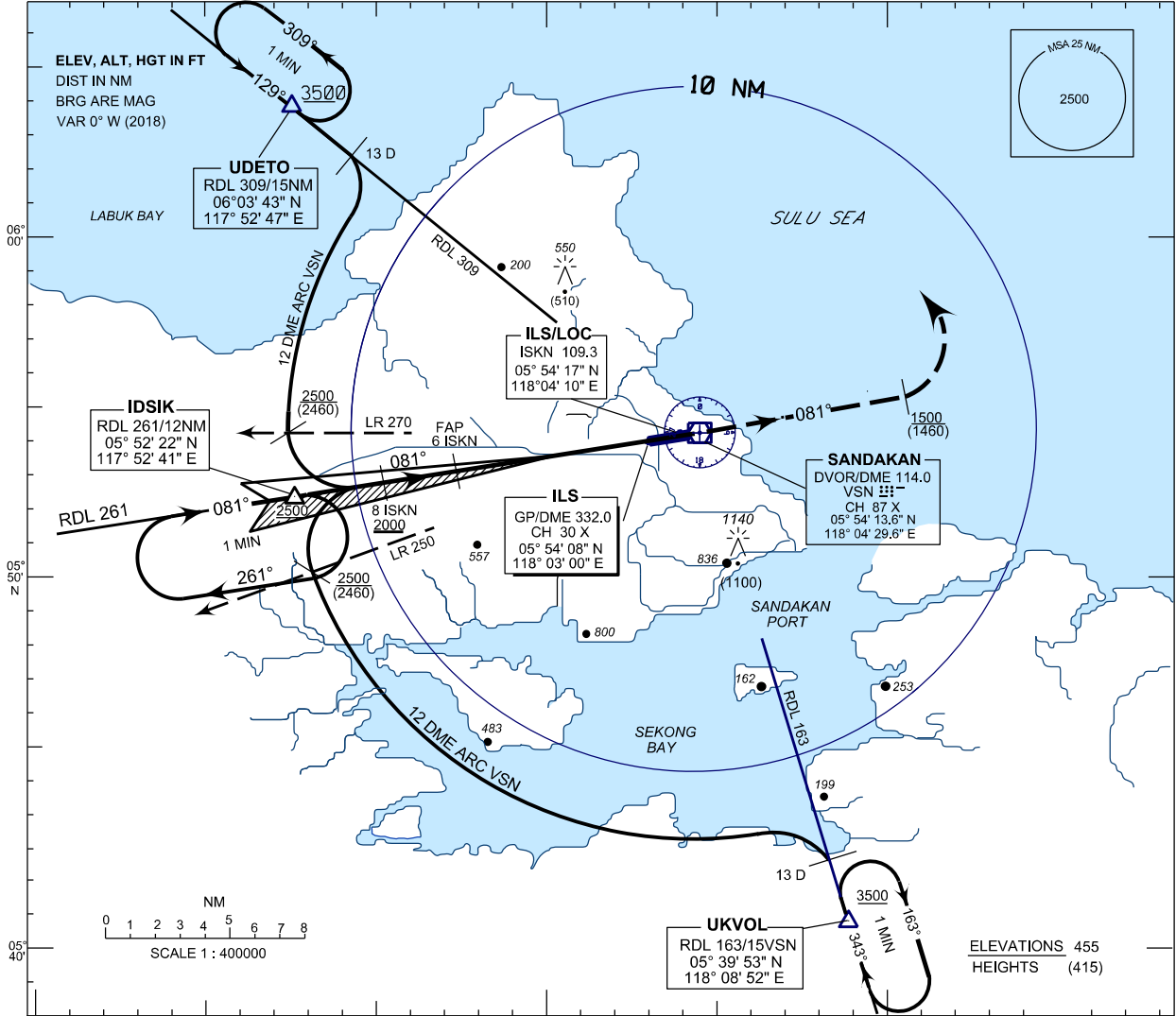


**INSTRUMENT
APPROACH
CHART - ICAO**

AERODROME ELEV 46FT
HEIGHTS RELATED TO
THR RWY 08 - ELEV 40FT

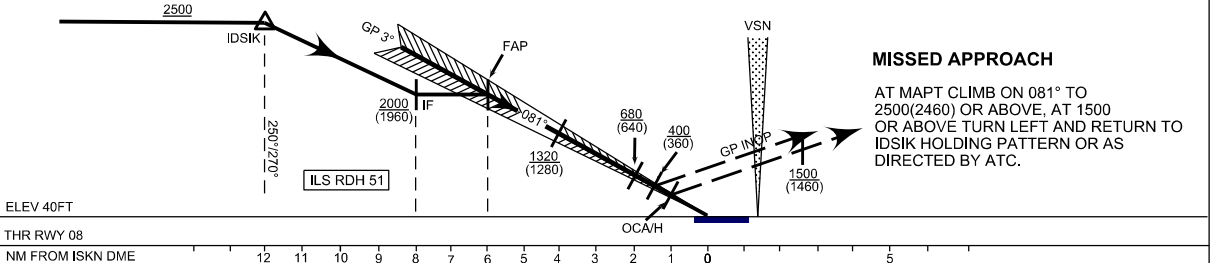
SMC 121.9
TWR 122.05
APP 123.2
ATIS 128.2

**SANDAKAN/SANDAKAN
(WBKS)**
ILS/DME ARC
RWY 08



ELEVATIONS 455
HEIGHTS (415)

TRANSITION LEVEL : FL130
TRANSITION ALT : 11000 FT



MISSED APPROACH
AT MAPT CLIMB ON 081° TO
2500(2460) OR ABOVE, AT 1500
OR ABOVE TURN LEFT AND RETURN TO
IDSIK HOLDING PATTERN OR AS
DIRECTED BY ATC.

ELEV 40FT
THR RWY 08
NM FROM ISKN DME

		OCA / H				
		A	B	C	D	
CATEGORY OF AIRCRAFT	STRAIGHT-IN - APPROACH	270 (230)	285 (245)	290 (250)	300 (260)	
	GP INOP			400 (360)		
CIRCLING : LEFT HAND ONLY		500 (460)		1400 (1360)		
DISTANCE		5 DME	4 DME	3 DME	2 DME	1 DME
ALTITUDE (HEIGHTS)		1640 (1600)	1320 (1280)	1000 (960)	680 (640)	360 (320)
GROUND SPEED (KNOTS)		70	90	120	140	165
RATE OF DESCENT (GS) (FT/MIN)		-	480	635	745	875

CHANGES : CHANGE VOR TO DVOR
REMOVE NDB SYMBOL FROM THE CHART