

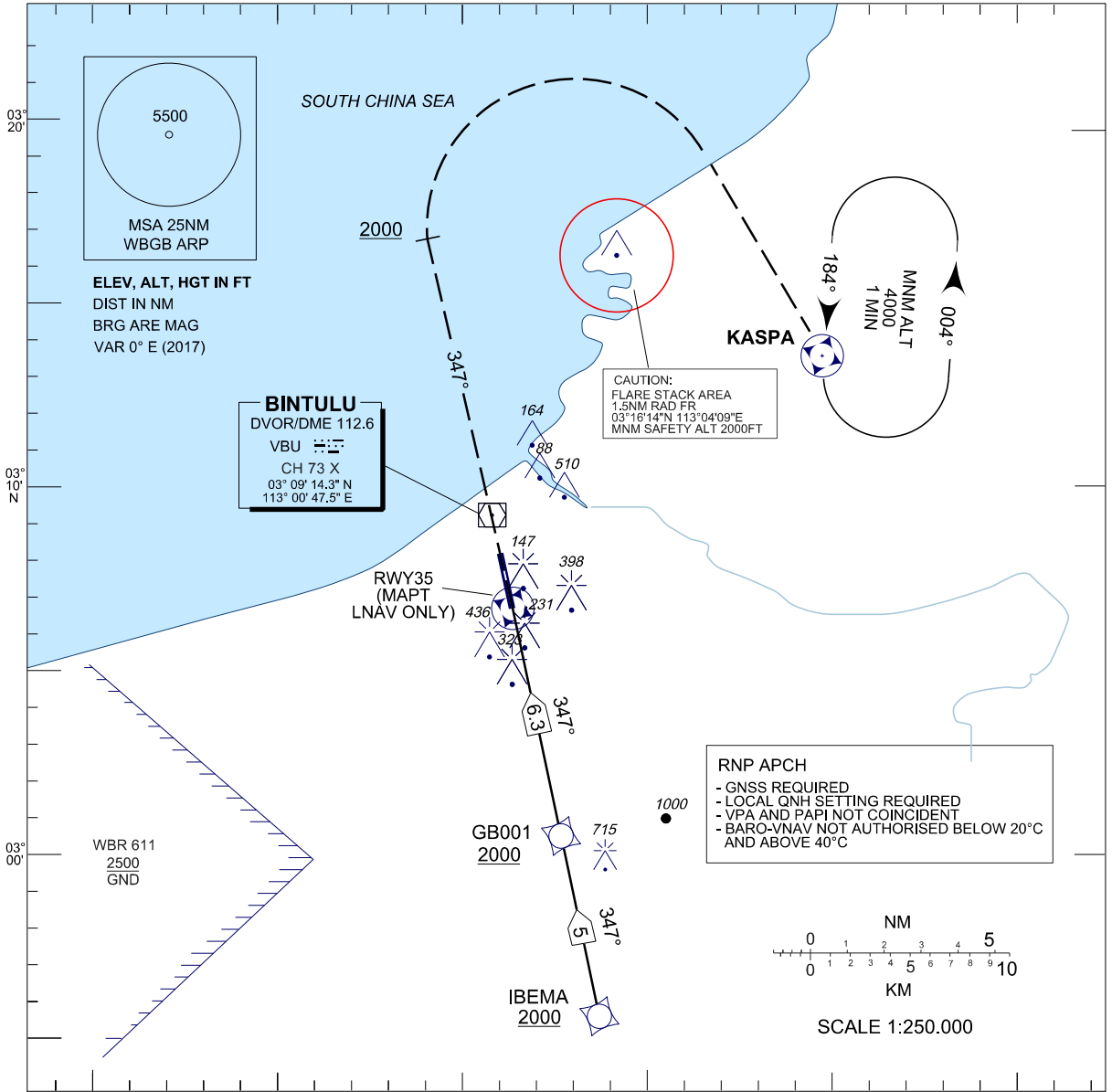
**INSTRUMENT  
APPROACH  
CHART - ICAO**

**AERODROME ELEV 75 FT**  
HEIGHTS RELATED TO  
THR RWY 35 - ELEV 75 FT

TWR/APP	SMC 121.8
122.3 (P)	
119.25 (S)	ATIS 127.8
121.5	

**BINTULU / BINTULU (WBGB)**  
**RWY 35**

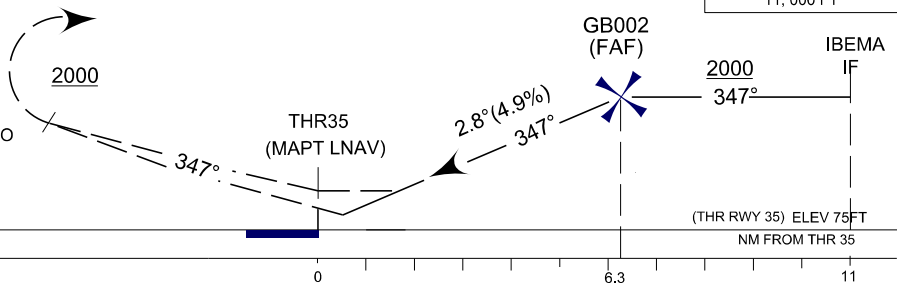
RNAV (GNSS) Y



**RDH 50FT**

**MISSED APPROACH**

CONTINUE TRACK 347°  
ON PASSING 2000FT  
TURN RIGHT TRACK DIRECT TO  
KASPA CLIMBING TO 4000FT  
OR AS DIRECTED BY ATC



OCA (OCH)	A	B	C	D
LNAV	630(555)			
LNAV/VNAV	566(491)	579(504)	597(522)	620(541)

DIST THR/ RWY35	NM	6.3	5.0	4.0	3.0	2.0	1.8
ALTITUDE	FT	2000	1610	1310	1010	710	650

GS	KT	80	100	120	140	160	180
FAF-RWY35 (6.3NM)	MIN:SEC	4:44	3:48	3:10	2:43	2:22	2:70
RATE OF DESCEND (305FT / NM)	FT/MIN	400	500	610	710	810	910