

INSTRUMENT APPROACH CHART - ICAO

AERODROME ELEV 75 FT
HEIGHTS RELATED TO
THR RWY 17 - ELEV 34 FT

| | | |
|------------|------|-------|
| TWR/APP | SMC | 121.8 |
| 122.3 (P) | | |
| 119.25 (S) | ATIS | 127.8 |
| 121.5 | | |

BINTULU / BINTULU (WBGB)
RWY 17

VOR - Z (12 DME ARC)

VIPUS HOLDING PATTERN

| | |
|------------|-------------------|
| TR IN 167° | VIPUS |
| TURN RIGHT | RDL 347/12VBU |
| MHA 2500FT | 03° 21' 00.85" N |
| IAS 230 KT | 112° 58' 12.52" E |

ELEV, ALT, HGT IN FT
DIST IN NM
BRG ARE MAG
VAR 0° E (2017)

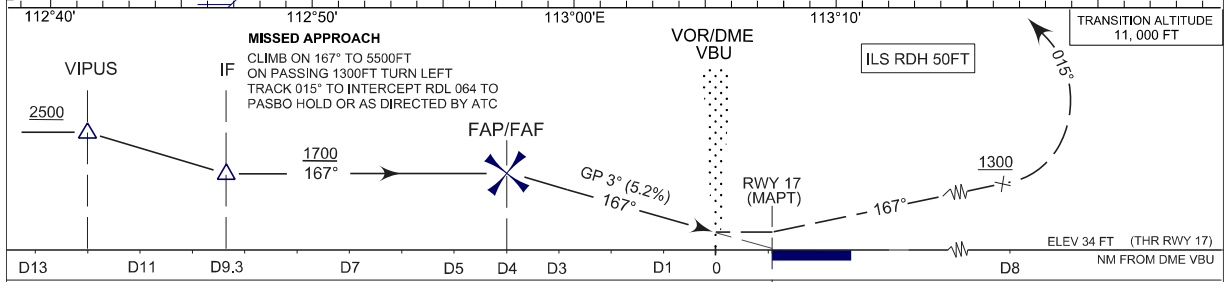
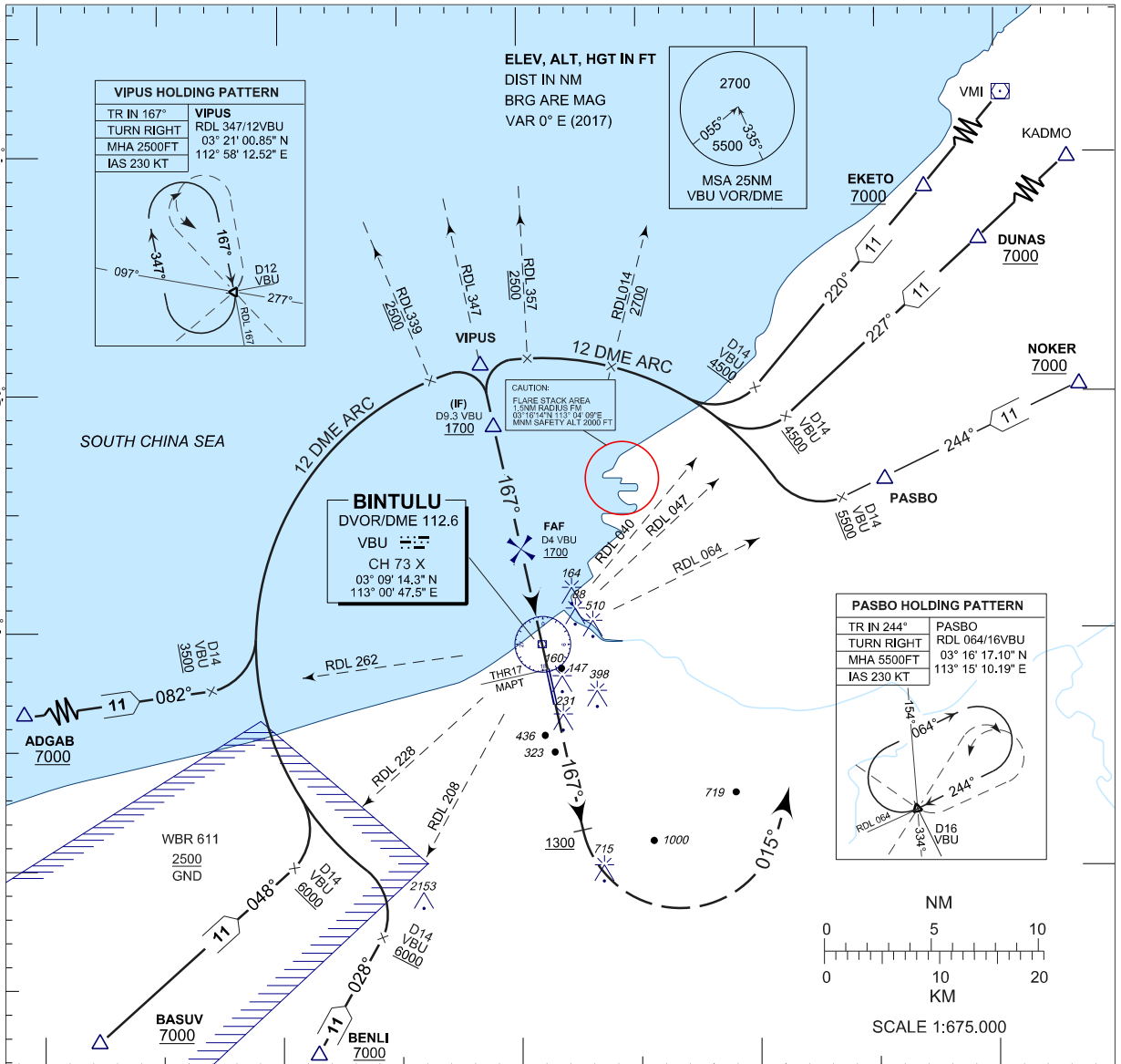
MSA 25NM
VBU VOR/DME

BINTULU

DVOR/DME 112.6
VBU
CH 73 X
03° 09' 14.3" N
113° 00' 47.5" E

PASBO HOLDING PATTERN

| | |
|------------|-------------------|
| TR IN 244° | PASBO |
| TURN RIGHT | RDL 064/16VBU |
| MHA 5500FT | 03° 16' 17.10" N |
| IAS 230 KT | 113° 15' 10.19" E |



| | | | | |
|-----------|---|-----------|---|---|
| OCA (OCH) | A | B | C | D |
| VOR/DME | | 430 (396) | | |

| | | | | | | | |
|----------------|----|------|------|------|-----|-----|-----|
| DME VBU | NM | 4.0 | 3.0 | 2.0 | 1.0 | 0.5 | 0.0 |
| DIST THR/RWY17 | NM | 5.1 | 4.1 | 3.1 | 2.1 | 1.6 | 1.1 |
| ALTITUDE | FT | 1700 | 1380 | 1060 | 750 | 590 | 430 |

| | | | | | | | |
|------------------------------|---------|------|-----|------|------|------|------|
| GS | KT | 80 | 100 | 120 | 140 | 160 | 180 |
| FAP17 - RWY17 (5.1NM) | MIN:SEC | 3:49 | 3:3 | 2:33 | 2:11 | 1:55 | 1:42 |
| RATE OF DESCEND(328.37FT/NM) | FT/MIN | 430 | 540 | 650 | 760 | 870 | 980 |