

**INSTRUMENT
APPROACH
CHART - ICAO**

AERODROME ELEV 75 FT
HEIGHTS RELATED TO
THR RWY 17 - ELEV 34 FT

TWR/APP	SMC	121.8
122.3 (P)		
119.25 (S)	ATIS	127.8
121.5		

**BINTULU / BINTULU (WBGB)
RWY 17**

ILS - Z OR LOC - Z
(12 DME ARC)

VIPUS HOLDING PATTERN

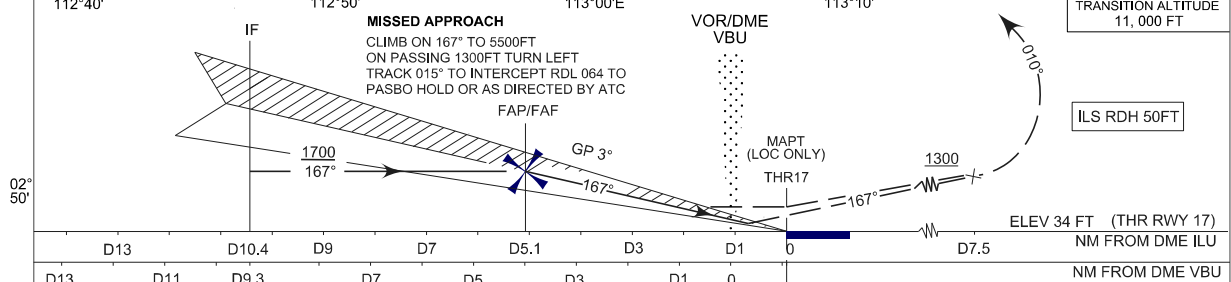
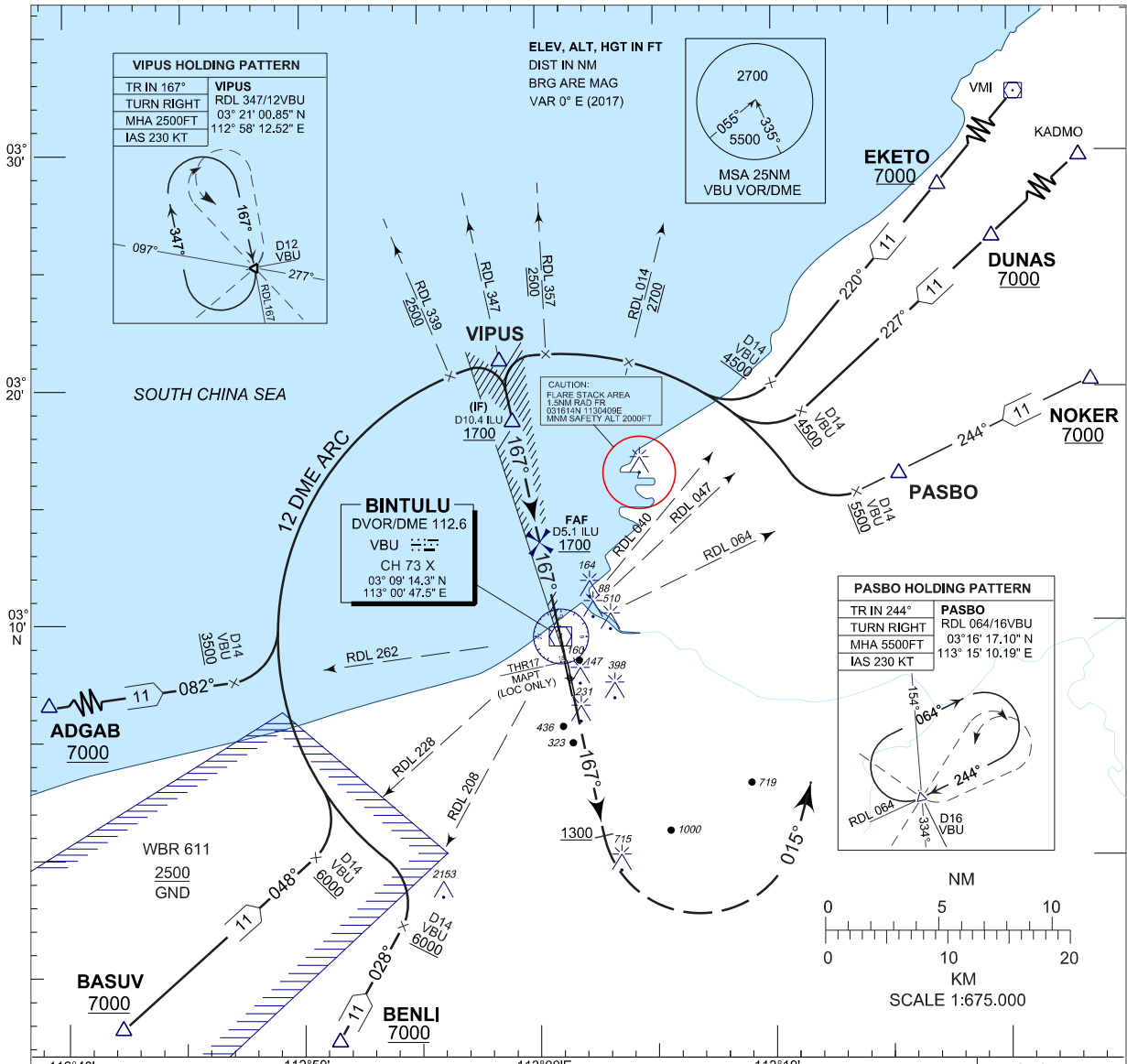
TR IN 167°	VIPUS
TURN RIGHT	RDL 347/12VBU
MHA 2500FT	03° 21' 00.85" N
IAS 230 KT	112° 58' 12.52" E

ELEV, ALT, HGT IN FT
DIST IN NM
BRG ARE MAG
VAR 0° E (2017)

2700

055° 335°
5500

MSA 25NM
VBU VOR/DME



OCA (OCH)	A	B	C	D
ILS/DME CAT I	340 (306)	352 (318)	361 (327)	371 (337)
LOC/DME	430 (396)			

DME ILU	NM	5.2	5	4	3	2	1
DIST THR/RWY17	NM	5.0	4.8	3.8	2.8	1.8	0.8
ALTITUDE	FT	1670	1620	1310	990	680	360

GS	KT	80	100	120	140	160	180
FAP17 - RWY17 (5.1NM)	MIN:SEC	3:49	3:3	2:33	2:11	1:55	1:42
RATE OF DESCEND(328.37FT/NM)	FT/MIN	430	540	650	760	870	980