

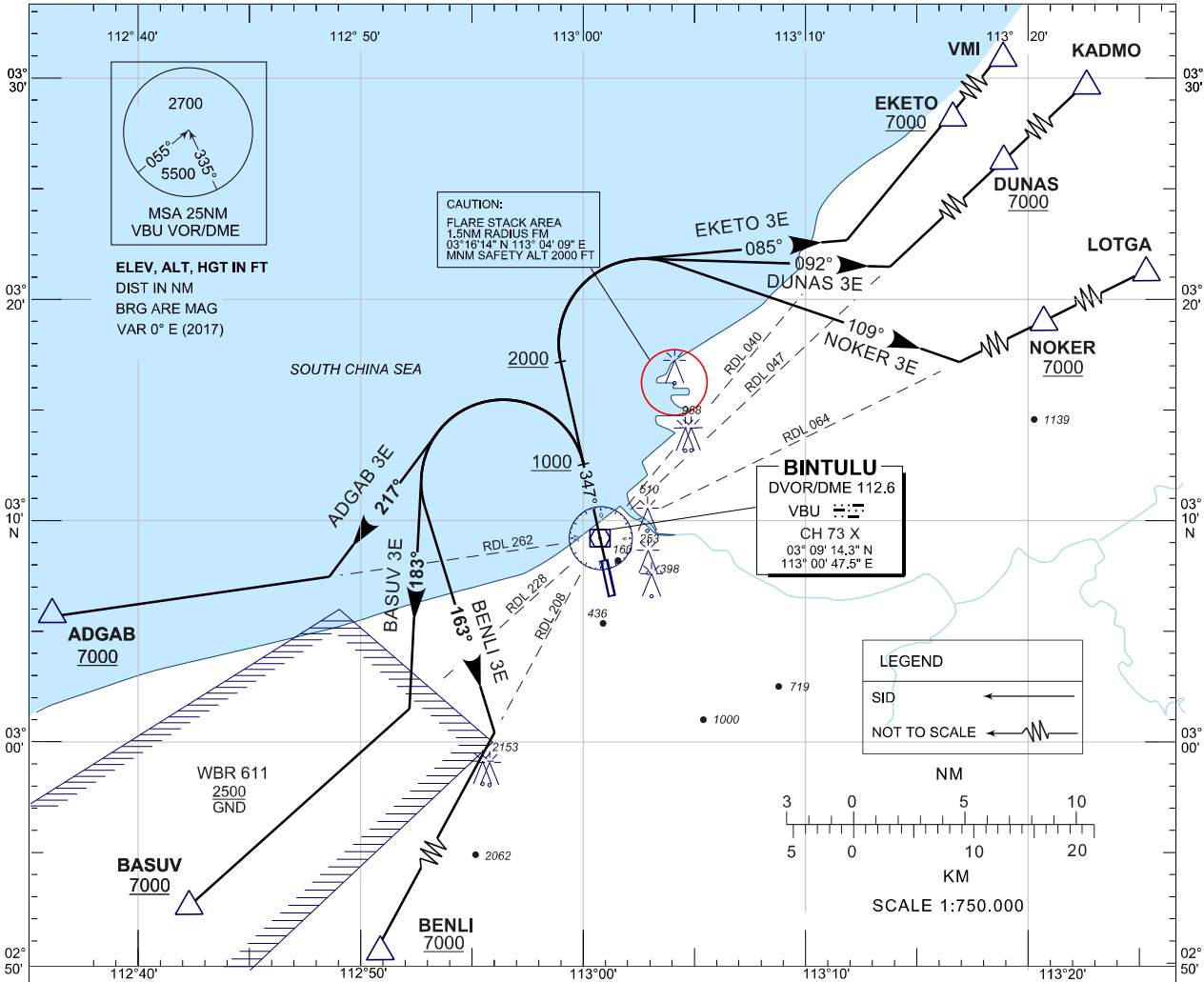
**STANDARD DEPARTURE CHART
INSTRUMENT (SID) - ICAO**

TRANSITION ALTITUDE
11,000 FT

TWR/APP 122.3 (P) 119.25 (S) 121.5	SMC 121.8 ATIS 127.8
---	-----------------------------------

**BINTULU / BINTULU (WBGB)
DEPARTURES RWY 35**

ADGAB 3E EKETO 3E
BASUV 3E DUNAS 3E
BENLI 3E NOKER 3E



COMMUNICATION FAILURE :

SQUAWK 7600

- IF UNDER PILOT NAVIGATION, MAINTAIN LAST ASSIGNED LEVEL FOR 3 MINUTES, IF NO ONWARD CLEARANCE IS RECEIVED. SUBSEQUENTLY CLIMB TO COMPLY WITH SID.
- IF UNDER RADAR VECTORIZING : MAINTAIN VECTOR FOR 2 MINUTES, IF BELOW MSA, CLIMB TO MSA, THEN TRACK TO INTERCEPT CLEARED OR PREVIOUSLY ASSIGNED SID TO DESTINATION.

INITIAL CLIMB PROCEDURE	DESIGNATOR	SID DESCRIPTION
AFTER TAKE-OFF TRACK 347° AT 1000FT OR ABOVE TURN LEFT NOTE : MINIMUM CLIMB GRADIENT (PDG) 3.5% UNTIL PASSING 7000 FT	ADGAB 3 ECHO	TRACK 217° TO INTERCEPT RDL 262 VBU VOR OUTBOUND TO ADGAB THEN W447
	BASUV 3 ECHO	TRACK 183° TO INTERCEPT RDL 228 VBU VOR OUTBOUND TO BASUV THEN G460
	BENLI 3 ECHO	TRACK 163° TO INTERCEPT RDL 208 VBU VOR OUTBOUND TO BENLI THEN W458
AFTER TAKE-OFF TRACK 347° AT 2000FT OR ABOVE TURN RIGHT NOTE : MINIMUM CLIMB GRADIENT (PDG) 3.5% UNTIL PASSING 7000 FT	EKETO 3 ECHO	TRACK 085° TO INTERCEPT RDL 040 VBU VOR OUTBOUND TO EKETO THEN W422
	DUNAS 3 ECHO	TRACK 092° TO INTERCEPT RDL 047 VBU VOR OUTBOUND TO DUNAS THEN G460
	NOKER 3 ECHO	TRACK 109° TO INTERCEPT RDL 064 VBU VOR OUTBOUND TO NOKER THEN W448