

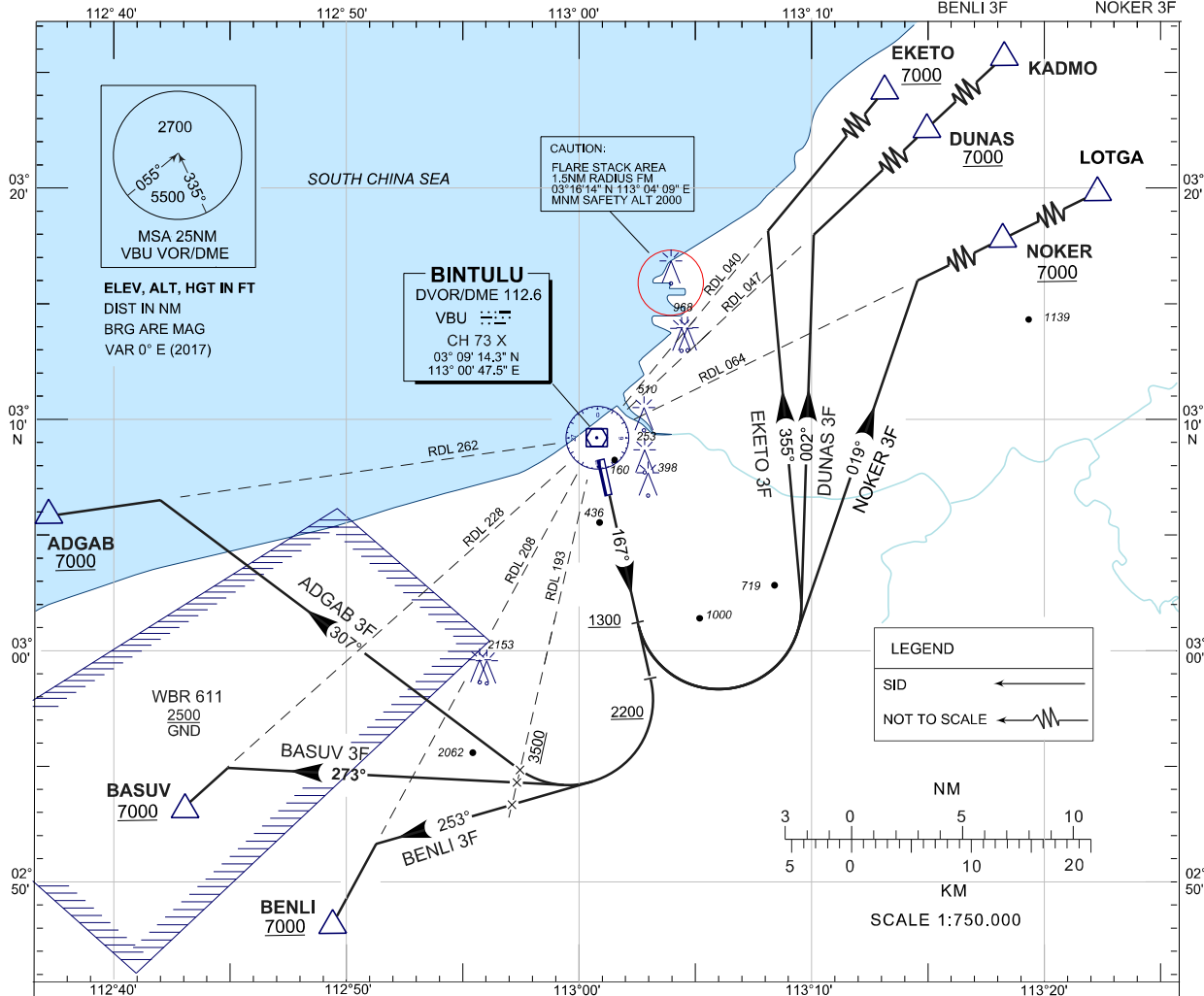
STANDARD DEPARTURE CHART INSTRUMENT (SID) - ICAO

BINTULU / BINTULU (WBGB) DEPARTURES RWY 17

TRANSITION ALTITUDE
11,000 FT

TWR/APP	SMC	121.8
122.3 (P)		
119.25 (S)	ATIS	127.8
121.5		

ADGAB 3F	EKETO 3F
BASUV 3F	DUNAS 3F
BENLI 3F	NOKER 3F



COMMUNICATION FAILURE :

SQUAWK 7600

- IF UNDER PILOT NAVIGATION, MAINTAIN LAST ASSIGNED LEVEL FOR 3 MINUTES, IF NO ONWARD CLEARANCE IS RECEIVED. SUBSEQUENTLY CLIMB TO COMPLY WITH SID.
- IF UNDER RADAR VECTORED : MAINTAIN VECTOR FOR 2 MINUTES, IF BELOW MSA, CLIMB TO MSA, THEN TRACK TO INTERCEPT CLEARED OR PREVIOUSLY ASSIGNED SID TO DESTINATION.

INITIAL CLIMB PROCEDURE	DESIGNATOR	SID DESCRIPTION
AFTER TAKE-OFF TRACK 167° AT 2200 TURN RIGHT MCA: CROSS RDL193 VBU VOR 3500+ NOTE : MINIMUM CLIMB GRADIENT (PDG) 4.0% UNTIL PASSING 7000 FT	ADGAB 3 FOXTROT	TRACK 307° TO INTERCEPT RDL 262 VBU VOR OUTBOUND TO ADGAB THEN W447
	BASUV 3 FOXTROT	TRACK 273° TO INTERCEPT RDL 228 VBU VOR OUTBOUND TO BASUV THEN G460
	BENLI 3 FOXTROT	TRACK 253° TO INTERCEPT RDL 208 VBU VOR OUTBOUND TO BENLI THEN W458
AFTER TAKE-OFF TRACK 167° AT 1300 TURN LEFT	EKETO 3 FOXTROT	TRACK 355° TO INTERCEPT RDL 040 VBU VOR OUTBOUND TO EKETO THEN W422
	DUNAS 3 FOXTROT	TRACK 002° TO INTERCEPT RDL 047 VBU VOR OUTBOUND TO DUNAS THEN KADMO/ G460
	NOKER 3 FOXTROT	TRACK 019° TO INTERCEPT RDL 064 VBU VOR OUTBOUND TO NOKER THEN LOTGA /W448