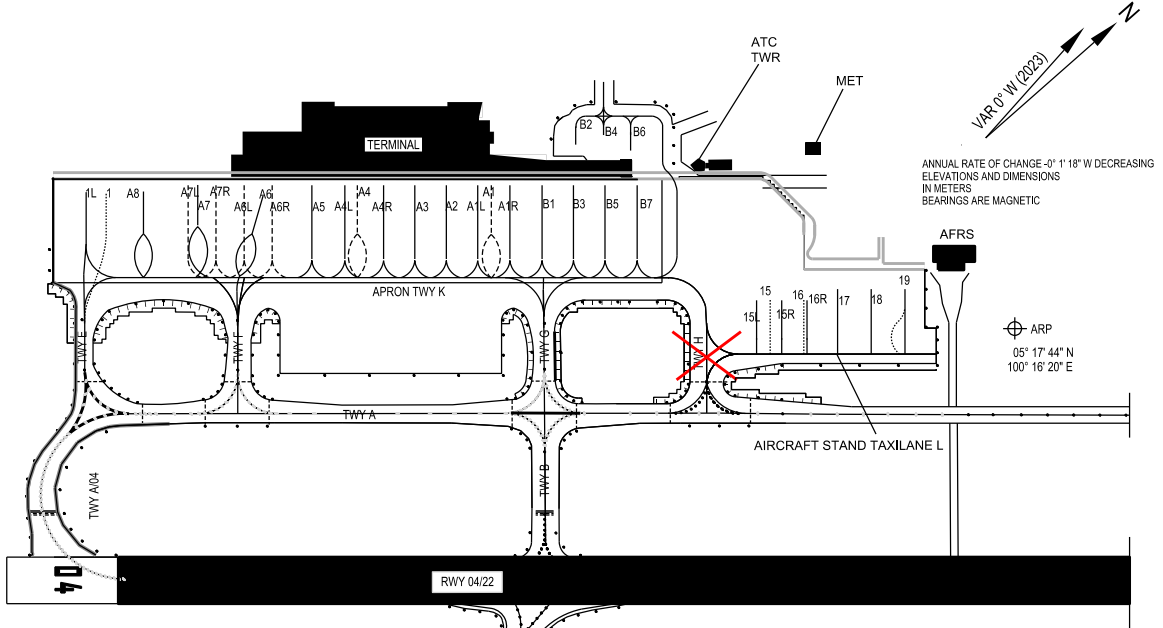


**AIRCRAFT PARKING/
DOCKING CHART - ICAO**
PHASE 2 (20250401 TIL 20260531 EST)

APRON ELEV
4 M

TWR 121.1
SMC 121.6
ATIS 121.9
126.4

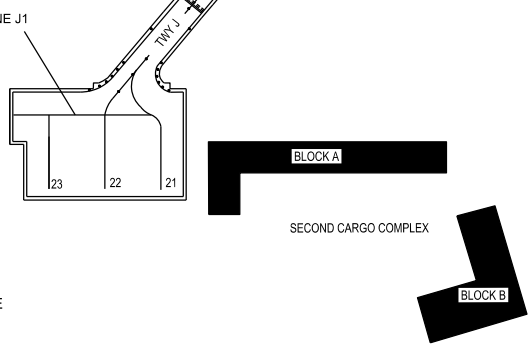
**PENANG/PENANG
INTERNATIONAL AIRPORT**



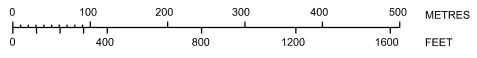
ANNUAL RATE OF CHANGE -0° 1' 18" W DECREASING
ELEVATIONS AND DIMENSIONS
IN METERS
BEARINGS ARE MAGNETIC

ARP
05° 17' 44" N
100° 16' 20" E

- TAXIWAY A, C AND E 23M WIDE
- TAXIWAY A/04 AND A/22 30M WIDE
- TAXIWAY B AND D 34M WIDE
- TAXIWAY F AND H 31M WIDE
- TAXIWAY G 32M WIDE
- TAXIWAY J 25M WIDE
- TAXIWAY H 42M WIDE
- APRON TAXIWAY K 24M WIDE
- AIRCRAFT STAND TAXILANE J1 48M WIDE
- AIRCRAFT STAND TAXILANE L 24M WIDE



- STANDARD TAXI ROUTE FOR B747-800 OPERATIONS ARE
TAXIWAYS A, E, A04, A22 AND PARKING IS BAY 1
- BEARING STRENGTH TWY A PCR 577/F/A/W/U
 - BEARING STRENGTH TWY A/04 PCR 787/R/A/W/U AND PCR 577/F/A/W/U
 - BEARING STRENGTH TWY A/22 PCR 577/F/A/W/U
 - BEARING STRENGTH TWY B PCR 643 /R/A/W/U AND PCR 481 /F/A/W/U
 - BEARING STRENGTH TWY C PCR 481/F/A/W/U
 - BEARING STRENGTH TWY D PCR 481/F/A/W/U
 - BEARING STRENGTH TWY E PCR 577/F/A/W/U
 - BEARING STRENGTH TWY F,H PCR 577/F/A/W/U
 - BEARING STRENGTH TWY G PCR 577/F/A/W/U
 - BEARING STRENGTH TWY H PCR 1250/R/C/W/T
 - BEARING STRENGTH TWY J PCR 715 /R/B/W/U
 - BEARING STRENGTH APRON TWY K PCR 1360/R/D/W/U
 - BEARING STRENGTH AIRCRAFT STAND TAXILANE J1 PCR 715/R/B/W/U
 - BEARING STRENGTH AIRCRAFT STAND TAXILANE L PCR 1250/R/C/W/T



AIRCRAFT STANDS A1, A1R, A1L, A3, A4, A4R, A4L, A5, A6, A6R FMT APIS ++ EQUIPPED
AIRCRAFT STANDS A2, B1, B3, B5, B7 SAFEGATE EQUIPPED

LEGEND	
AIRCRAFT STAND	23
TAXIWAY LIGHT	•
RUNWAY-HOLDING POSITION	▬▬▬▬
INTERMEDIATE HOLDING POSITION	----
CLOSED MARKING	✗

CHANGES : UPDATE NEW APRON TAXILANE L
UPDATE TEMPORARY CLOSURE OF TAXIWAY H
UPDATE NEW AIRCRAFT PARKING BAY NO 1L AND 1
UPDATE REMOVAL OF AIRCRAFT PARKING BAY NO B9L,B9,B9R
UPDATE REMOVAL OF EXISTING AIRCRAFT STAND TAXILANE L
UPDATE NEW AIRCRAFT PARKING BAY NO 15L,15,15R,16,16R,17,18,19