

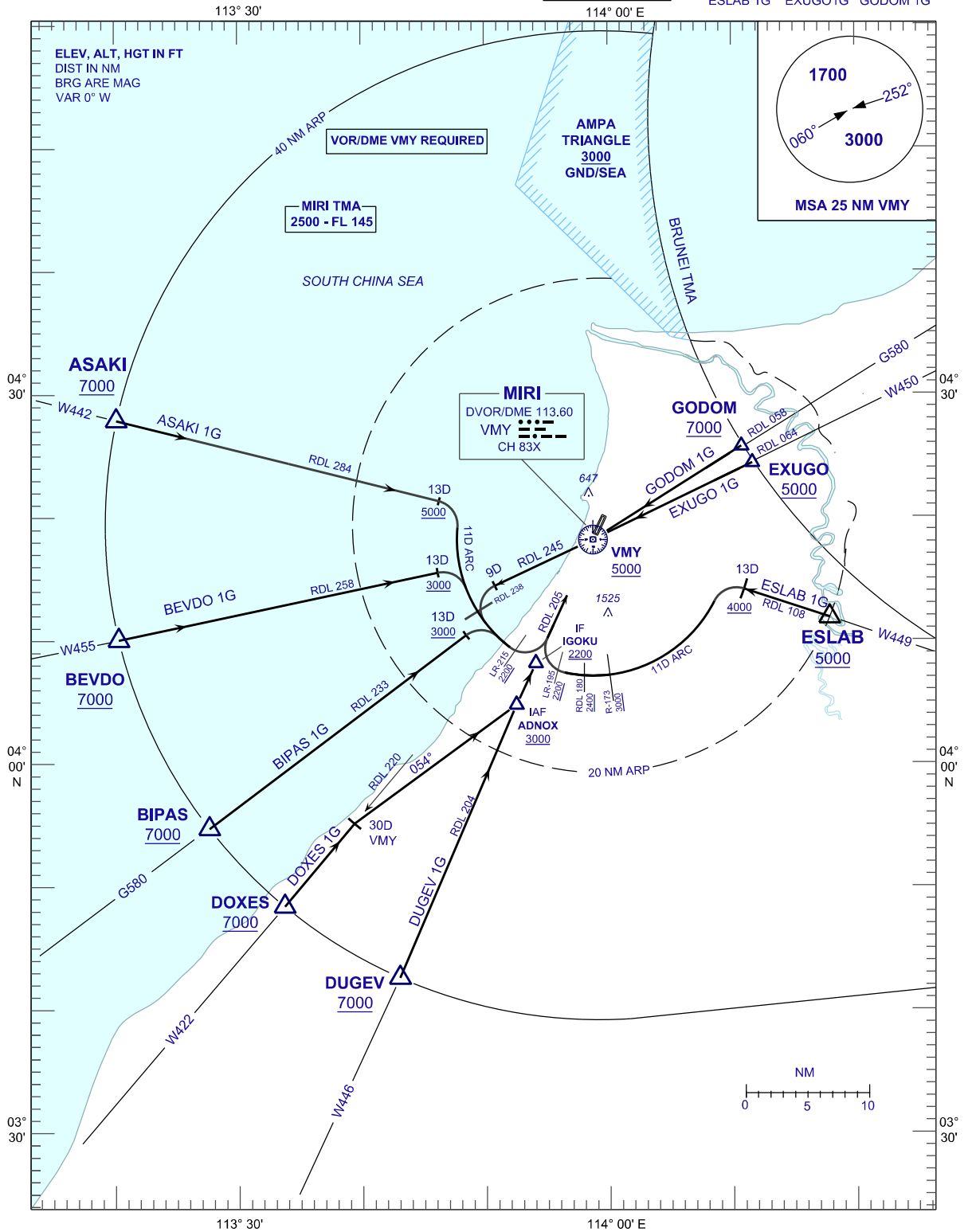
**STANDARD ARRIVAL CHART  
INSTRUMENT (STAR) - ICAO**

TRANSITION ALTITUDE  
11 000 FT

APP 129.9(P)  
122.7(S)  
TWR 123.3  
SMC 121.9  
CATIS 127.0

**MIRI/MIRI (WBGR)  
RWY 02**

ARRIVAL (11 DME ARC)  
ASAHI 1G BEVDO 1G  
BIPAS 1G DOXES 1G DUGEVE 1G  
ESLAB 1G EXUGO1G GODOM 1G



CHANGES : OBSTACLE HEIGHT