

WBGs AD 2.1 AERODROME LOCATION INDICATOR AND NAME**WBGs - SIBU****WBGs AD 2.2 AERODROME GEOGRAPHICAL AND ADMINISTRATIVE DATA**

1	ARP coordinates and site at AD	02 15 50.82N 111 58 57.31E
2	Direction and distance from city	Dist 23 KM East South-East
3	Elevation / Reference temperature	122 FT (37.1 M) / 33° C
4	Geoid Undulation (ARP)	+37.332 M
5	MAG VAR/Annual change	38 min 46 sec East (2010)
6	AD Administration, address, telephone, telefax, telex, AFS	<p>Operator: Malaysia Airports Berhad Sibu Airport P.O. Box 645 96007 Sibu Sarawak. Tel : 084 - 307770 Fax : 084 - 307709</p> <p>ATC Services: Department of Civil Aviation Malaysia Sibu Airport Jalan Durin 96007 Sibu Sarawak. Tel : 084 - 307764 Fax : 084 - 307708</p>
7	Types of traffic permitted (IFR/VFR)	IFR / VFR
8	Remarks	Nil

WBGs AD 2.3 OPERATIONAL HOURS

1	AD Administration	2230 - 1330 UTC Daily.
2	Customs and immigration	Customs : 2200 - 1330 Immigration : 2200 - 1230
3	Health and sanitation	Nil
4	AIS Briefing Office	Nil
5	ATS Reporting Office (ARO)	2230 - 1330
6	MET Briefing Office	H24
7	ATS	2230 - 1330
8	Fuelling	Petronas : 2200 - 1300
9	Handling	2200 - 1330
10	Security	H24
11	De-icing	Nil
12	Remarks	Nil

WBGS AD 2.4 HANDLING SERVICES AND FACILITIES

1	Cargo handling facilities	By arrangement with Malaysia Airline System.
2	Fuel / Oil types	Jet A1
3	Fuelling facilities / capacity	PETRONAS, refuelling by bowser.
4	De-icing facilities	Nil
5	Hanger space available for visiting aircraft	Nil
6	Repair facilities for visiting aircraft	Nil
7	Remarks	Nil

WBGS AD 2.5 PASSENGER FACILITIES

1	Hotels	Hotels in town.
2	Restaurants	Airport restaurant at airport terminal.
3	Transportation	Taxi and bus services.
4	Medical facilities	Sibu Hospital in town.
5	Bank and Post Offices	Nil
6	Tourist Office	Nil
7	Remarks	Nil

WBGS AD 2.6 RESCUE AND FIRE FIGHTING SERVICES

1	AD category for fire fighting	Required : CAT VI Available: CAT VI Trained personnel: Min 7 per shift Max 12 per shift
2	Rescue equipment	Type of vehicle : a) Ultra Large Foam Tender (2 units) b) Mini Rapid Intervention Vehicle (1unit)
3	Capability for removal of disabled aircraft	Nil
4	Remarks	Nil

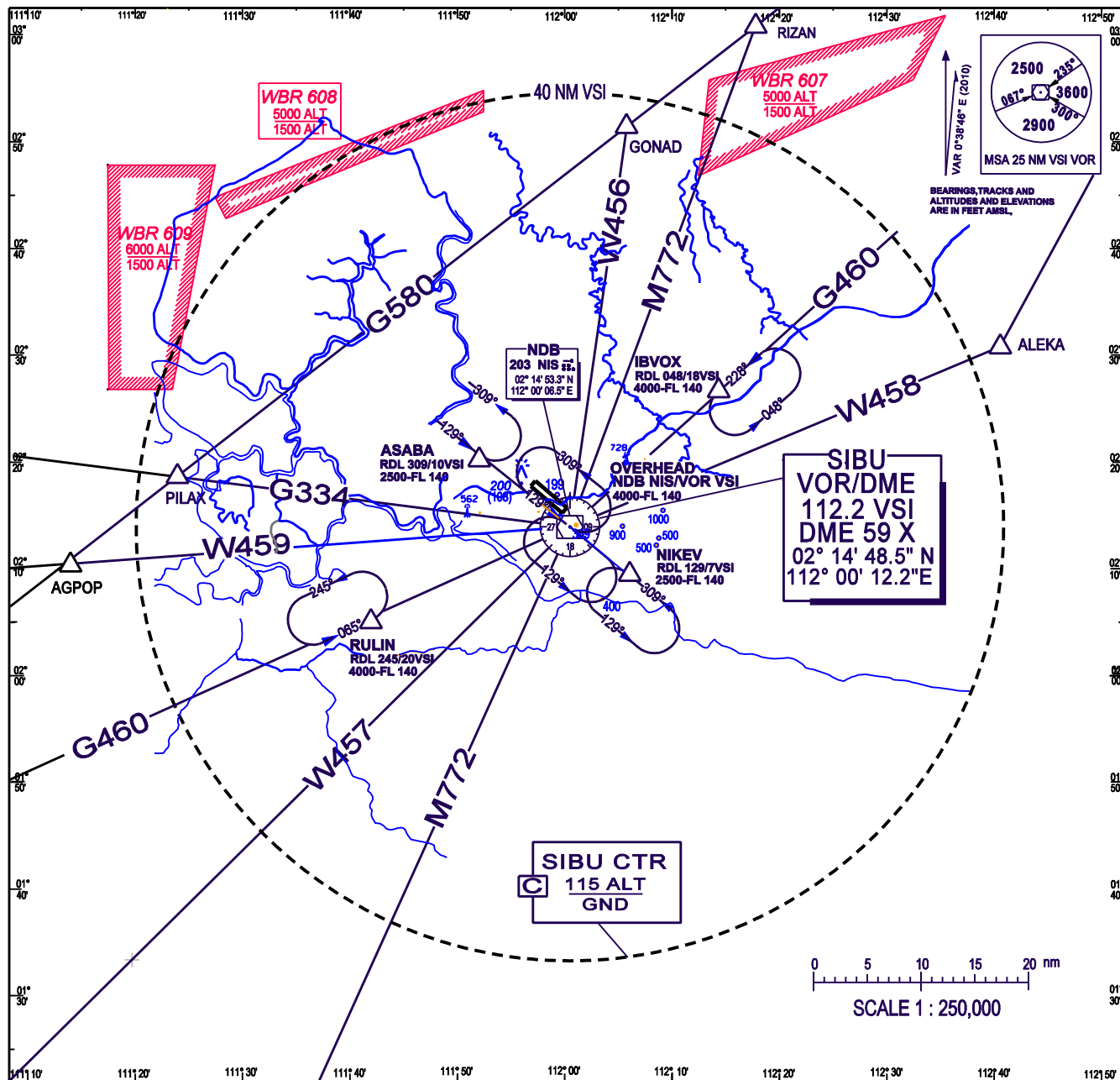
WBGS AD 2.7 SEASONAL AVAILABILITY - CLEARING

NOT APPLICABLE

WBGS AD 2.8 APRONS, TAXIWAYS AND CHECK LOCATIONS DATA

1	Apron surface and strength	Surface : Concrete Strength : Bay 1,2,3, & 4 : PCN 55/R/C/X/T
2	Taxiway width, surface and strength	Width : 23 M Surface : Asphalt Strength : PCN 61/F/C/X/T
3	ACL location and elevation	Location: At apron Elevation: 31.91 M / 104.69 FT.
4	VOR / INS checkpoint	VOR : At TWY A holding point. See AD Chart TWY A : 021451.66N 1115942.29E Brg 087° 15' 7.20" Dist : 1.08 NM / 2.012 KM INS : At aircraft parking stands (See WBGS AD 2-25.1)
5	Remarks	Apron is restricted to CODE E A330

SIBU CONTROL ZONE, VOR/DME, VOR & NDB OVERHEAD HOLDING TRACKS AREAS



SIBU ATC SURVEILLANCE MINIMUM ALTITUDE CHART

