

---

**WMKL AD 2.24 CHARTS RELATED TO LANGKAWI INTERNATIONAL AIRPORT**

Chart Name	Page
AERODROME CHART - ICAO	WMKL AD 2 - 23
AERODROME OBSTACLE CHART - ICAO - TYPE A	WMKL AD 2 - 31
RADAR VECTORING AREA CHART	WMKL AD 2 - 49
STANDARD DEPARTURE CHART RWY 21 - EAST	WMKL AD 2 - 51
STANDARD DEPARTURE CHART RWY 21 - SOUTH	WMKL AD 2 - 52
STANDARD DEPARTURE CHART RWY 21 - WEST	WMKL AD 2 - 53
STANDARD ARRIVAL CHARTS RWY 03 - EAST	WMKL AD 2 - 61
STANDARD ARRIVAL CHARTS RWY 03 - SOUTH	WMKL AD 2 - 62
STANDARD ARRIVAL CHARTS RWY 03 - WEST	WMKL AD 2 - 63
INSTRUMENT APPROACH CHART - ICAO - RWY 03 ILS/DME (Entry from STAR NORTH, STAR EAST, STAR SOUTH OR STAR WEST)	WMKL AD 2 - 81
INSTRUMENT APPROACH CHART - ICAO - RWY 03 ILS/DME ( Entry from TANOB OR REBAX)	WMKL AD 2 - 83
INSTRUMENT APPROACH CHART - ICAO - RWY 03 ILS/DME (Entry from VPL OR LK)	WMKL AD 2 - 85
INSTRUMENT APPROACH CHART - ICAO - RWY 03 VOR/DME VPL	WMKL AD 2 - 87
INSTRUMENT APPROACH CHART - ICAO - RWY 03 VOR/LOCATOR (CAT A & B)	WMKL AD 2 - 89
INSTRUMENT APPROACH CHART - ICAO - RWY 03 VOR/LOCATOR (CAT C & D)	WMKL AD 2 - 91
INSTRUMENT APPROACH CHART - ICAO - RWY 03 LOCATOR (CAT A & B)	WMKL AD 2 - 95

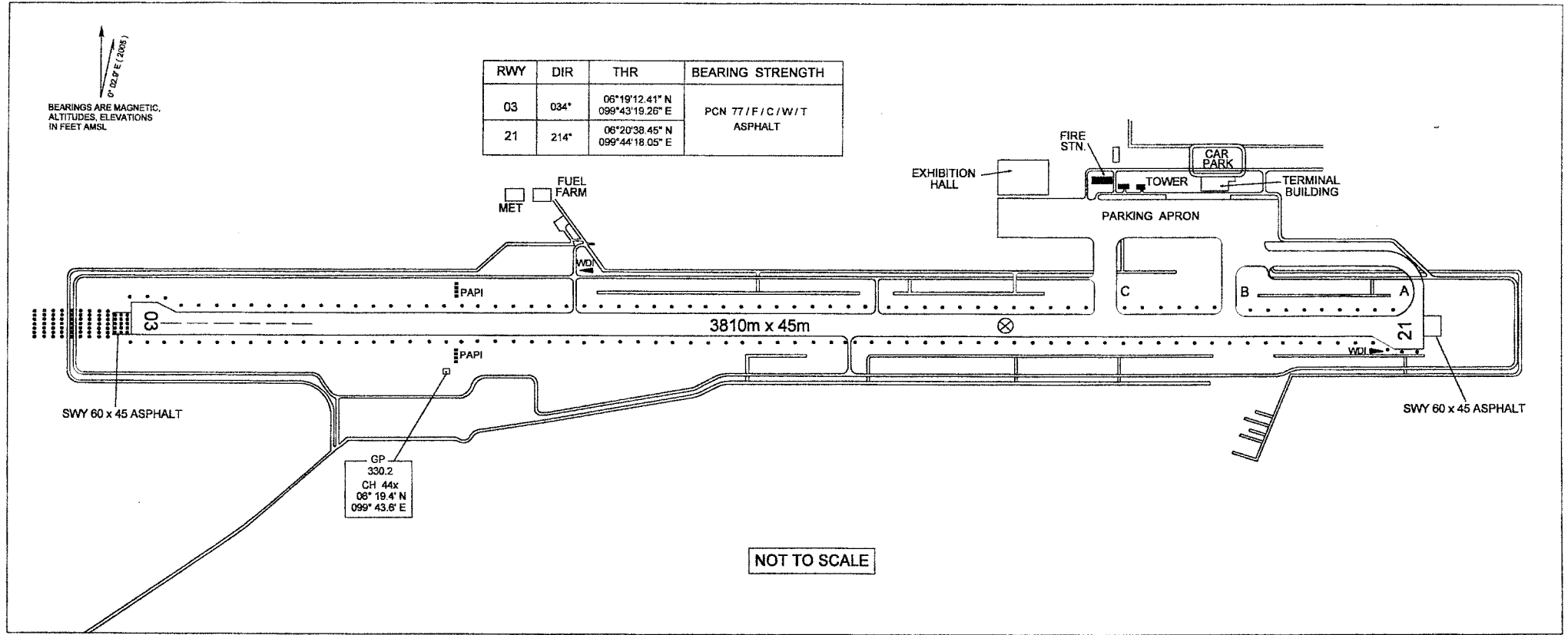
AERODROME / HELIPORT CHART -  
ICAO

06° 19' 34" N  
099° 43' 29" E ELEV. 9 m

TWR	281.1
	118.5
APP	119.4
	121.5
SMC	121.8
ATIS	128.2

LANGKAWI / LANGKAWI

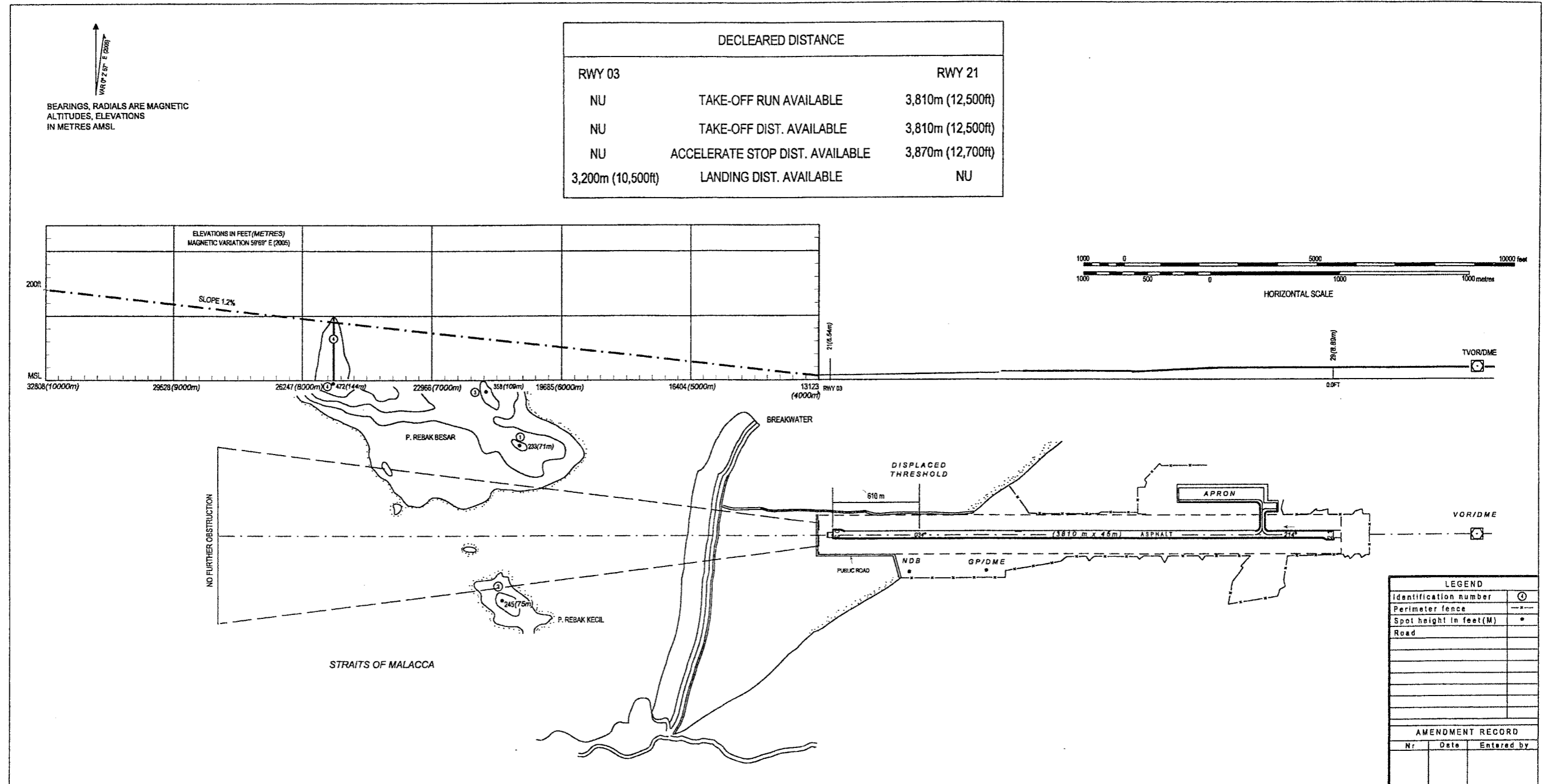
RWY	DIR	THR	BEARING STRENGTH
03	034°	06°19'12.41" N 099°43'19.26" E	PCN 77/F/C/W/T ASPHALT
21	214°	06°20'38.45" N 099°44'18.05" E	



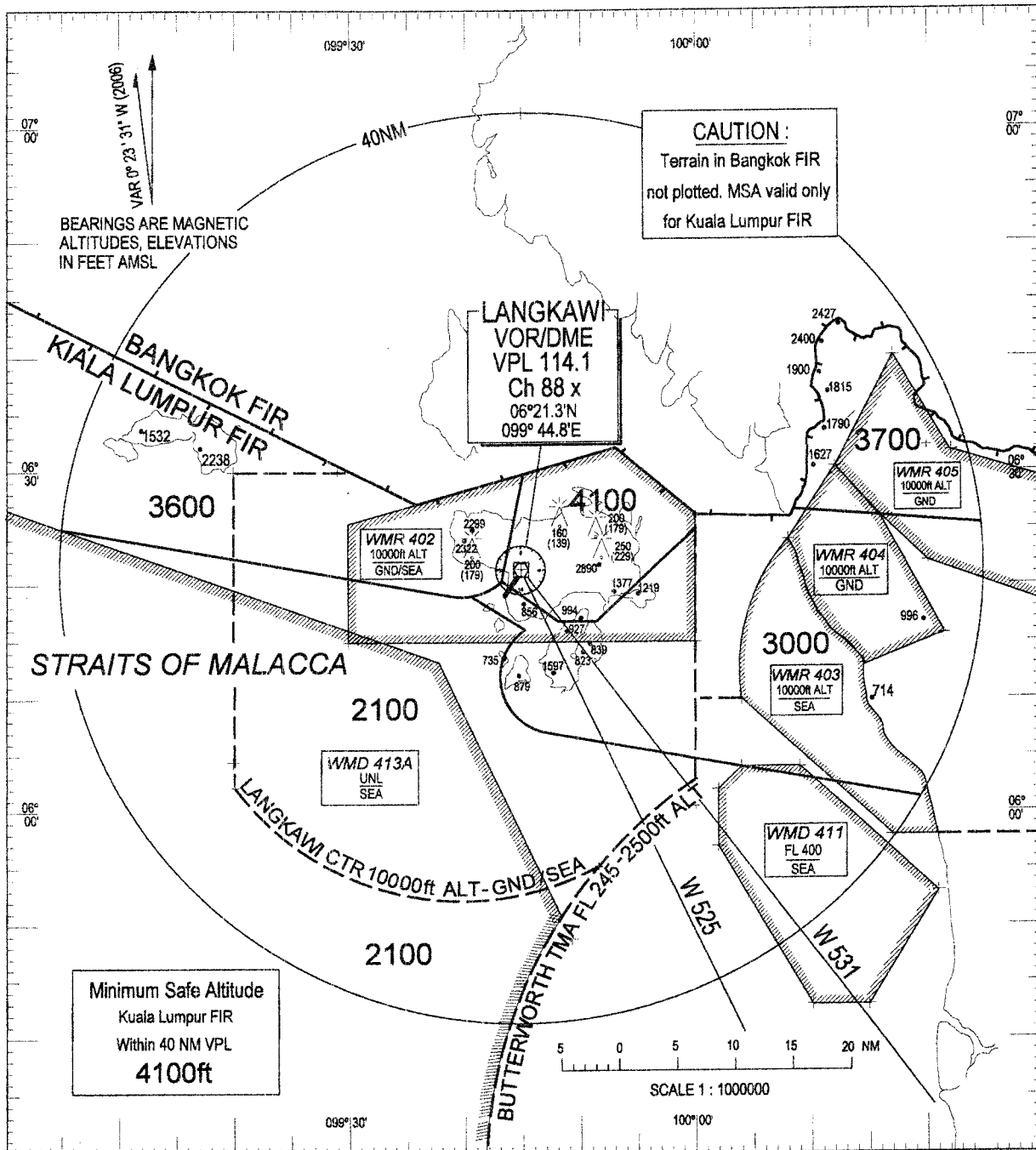
**AERODROME OBSTACLE CHART - ICAO**  
**TYPE A (OPERATING LIMITATIONS)**

**LANGKAWI/LANGKAWI**  
 PENINSULAR MALAYSIA

ELEV. 9M



# RADAR VECTORING AREA CHART - LANGKAWI



**Loss of Radio Communication Procedures :**

1. Squawk 7600
2. (a) In VMC :  
Continue visually for the duty runway and land ; or
- (b) In IMC :  
If below MSA climb to 4100ft, otherwise, maintain last assigned altitude. Track to VPL
3. At VPL carry out the published standard radio communication failure procedures for the duty runway

**Notes :**

The RVA Chart Provides 1000ft terrain clearance from obstacles within 5NM of the aircraft's position

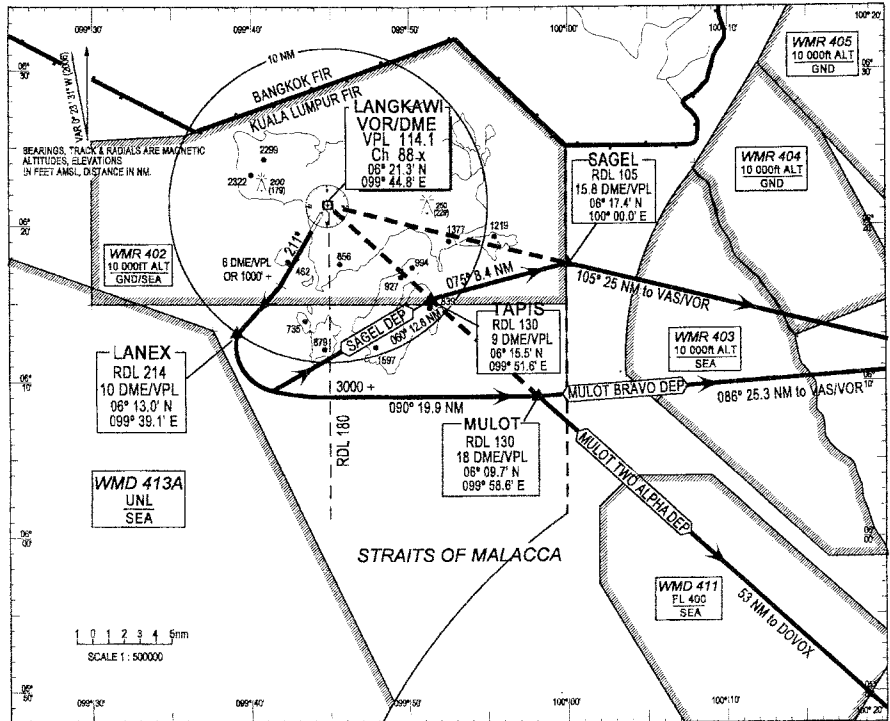
STANDARD DEPARTURE CHART  
INSTRUMENT (SID) - ICAO

LANGKAWI/LANGKAWI  
RWY 21 - EAST

TRANSITION ALTITUDE  
11000R



TWR 118.5  
281.1  
APP 113.4  
257.8  
ATIS 128.2



**RUNWAY 21**

**MULOT TWO ALPHA DEPARTURE**

- \* Initial track 211° to 1000 ft or 6 DME VPL thence track to LANEX
- \* At LANEX turn left heading 090° for MULOT
- \* Cross R-180 VPL at 3000 ft or above
- \* Intercept R-130 VPL at or before MULOT
- \* Track along R-130 VPL to intercept ATS route R325 at DOVOX (053555N 1003901E R-130 VPL 71 DME)

**MULOT BRAVO DEPARTURE**

- \* Initial track 211° to 1000 ft or 6 DME VPL thence track to LANEX
- \* At LANEX turn left heading 090° for MULOT
- \* Cross R-180 VPL at 3000 ft or above
- \* From MULOT track 086° R-266 VAS to VAS VOR
- \* Thence track via ATC cleared route

**SAGEL DEPARTURE (Alternative route to VAS VOR)**

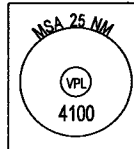
- \* Initial track 211° to 1000 ft or 6 DME VPL thence track to LANEX
- \* At LANEX turn left heading 060° for TAPIS
- \* Cross R-180 VPL at 3000 ft or above
- \* From TAPIS track 075° for SAGEL
- \* From SAGEL track 105° R-284 VAS to VAS VOR
- \* Thence track via ATC cleared route

STANDARD DEPARTURE CHART  
INSTRUMENT (SID) - ICAO

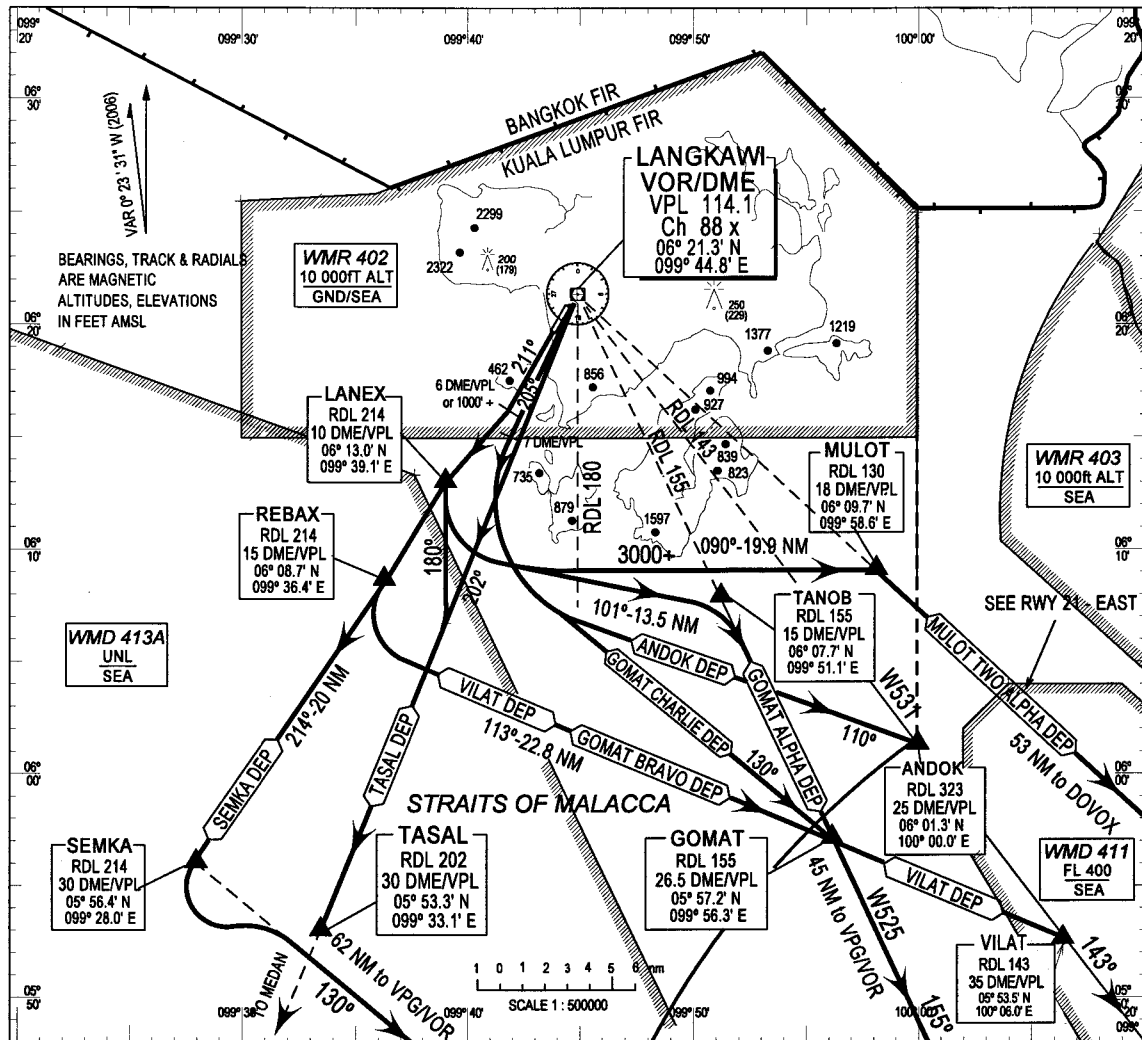
LANGKAWI/LANGKAWI

RWY 21 - SOUTH

TRANSITION ALTITUDE  
11000ft



TWR 118.5  
281.1  
APP 119.4  
257.8  
ATIS 128.2



SEMKA DEPARTURE

- \* Initial track 211° to 1000 ft. or 6 DME VPL thence track to LANEX
- \* From LANEX track RDL 214 VPL for SEMKA
- \* From SEMKA track 130° for VPG VOR
- \* Thence track via ATC cleared route

TASAL DEPARTURE

- \* Initial track 211° to 1000 ft. or 6 DME VPL thence track to LANEX
- \* At LANEX turn left heading 180°
- \* Intercept RDL 202 VPL to TASAL
- \* Thence track via ATC cleared route

VILAT DEPARTURE

- \* Initial track 211° to 1000 ft. or 6 DME VPL thence track to LANEX
- \* From LANEX track RDL 214 VPL for REBAX
- \* At REBAX turn left heading 113°
- \* Intercept RDL 143 VPL (W531) at or before VILAT

**RUNWAY 21**

GOMAT ALPHA DEPARTURE

- \* Initial track 211° to 1000 ft. or 6 DME VPL thence track to LANEX
- \* At LANEX turn left heading 101°
- \* Cross RDL 180 VPL at 3000 ft. or above
- \* Intercept RDL 155 VPL (W525) and track to GOMAT
- \* Thence track via ATC cleared route

GOMAT BRAVO DEPARTURE

- \* Initial track 211° to 1000 ft. or 6 DME VPL thence track to LANEX
- \* From LANEX track on RDL 214 VPL for REBAX
- \* At REBAX turn left heading 113°
- \* Intercept RDL 155 VPL (W525) at or before GOMAT

GOMAT CHARLIE DEPARTURE

- \* Initial track 205°
- \* At 7 DME VPL or passing 1000ft whichever earlier, TURN LEFT
- \* Track heading 130° intercept RDL 155 at or before GOMAT
- \* Continue on Airway W525

ANDOK DEPARTURE

- \* Initial track 205°
- \* At 7 DME VPL or passing 1000ft whichever earlier, TURN LEFT
- \* Track heading 110° intercept RDL 143 at or before ANDOK
- \* Continue on Airway W531

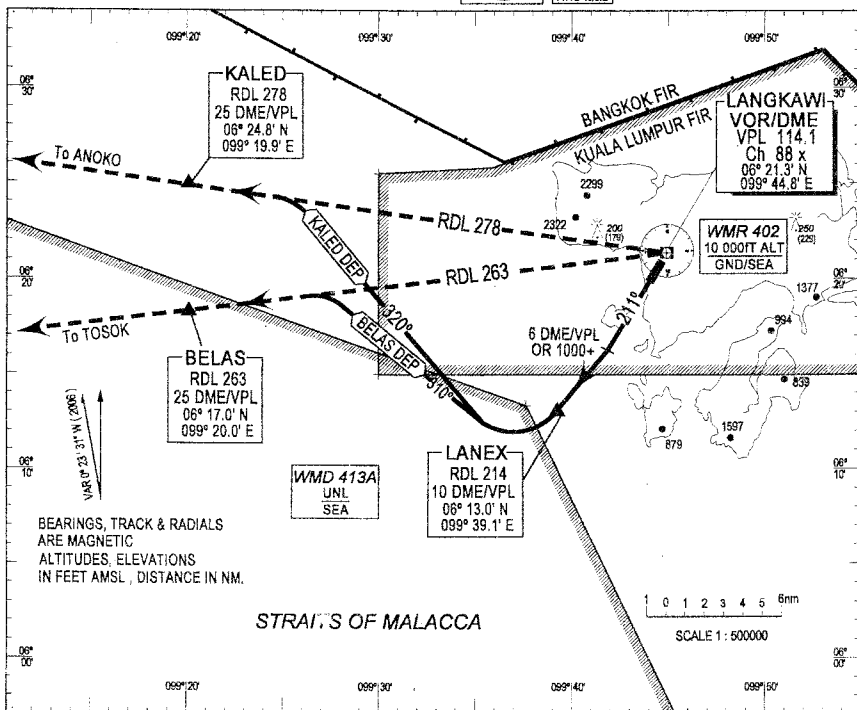
STANDARD DEPARTURE CHART  
INSTRUMENT (SID) - ICAO

LANGKAWI/LANGKAWI  
RWY 21 - WEST

TRANSITION ALTITUDE  
11000R



TWR 118.5  
281.1  
APP 119.4  
257.8  
ATIS 128.2



**RUNWAY 21**

KALED DEPARTURE

- \* Initial track 211° to 1000ft or 6 DME VPL thence to LANEX
- \* Turn right at LANEX heading 320°
- \* Intercept R-278 VPL to KALED
- \* Thence track via ATC cleared route

BELAS DEPARTURE

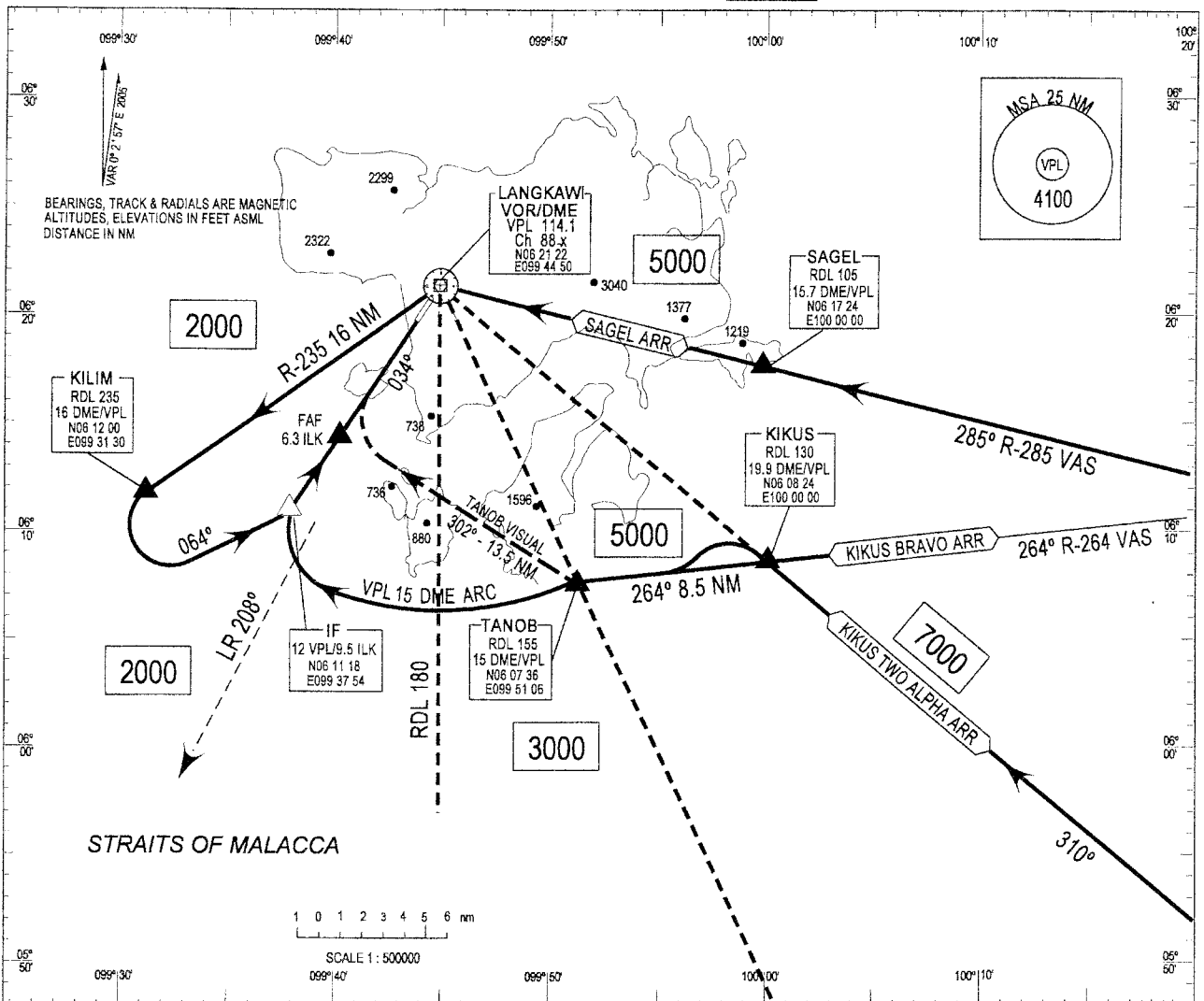
- \* Initial track 211° to 1000ft or 6 DME VPL thence to LANEX
- \* Turn right at LANEX heading 310°
- \* Intercept R-263 VPL to BELAS
- \* Thence track via ATC cleared route

STANDARD ARRIVAL CHART  
INSTRUMENT (STAR) - ICAO

TRANSITION ALTITUDE  
11000ft

TWR 118.5  
281.1  
APP 119.4  
121.5  
ATIS 128.2

LANGKAWI/LANGKAWI  
PENINSULAR MALAYSIA  
RWY 03 - EAST



KIKUS TWO ALPHA ARRIVAL

- \* From DOVOX (053555N,1003901E) track 310° to KIKUS
- \* Descend to 7000 ft
- \* From KIKUS track 264° to TANOB
- \* Descend to 5000 ft
- \* Fly 15 DME ARC descend to 3000 ft
- \* On crossing R-180 VPL descend to 2000 ft
- \* On crossing LR208 turn right to intercept LLZ for ILS approach

KIKUS BRAVO ARRIVAL

- \* From VAS track on R-264 VAS to TANOB
- \* Descend to 5000 ft
- \* Fly 15 DME ARC descend to 3000 ft
- \* On crossing R-180 VPL descend to 2000 ft
- \* On crossing LR208 turn right to intercept LLZ for ILS approach

SAGEL ARRIVAL

- \* From VAS track on R-285 VAS to SAGEL
- \* From SAGEL track to VPL descend to 5000 ft
- \* Intercept R-235 VPL to KILIM
- \* After VPL descend to 2000 ft
- \* At KILIM turn left heading 064° to intercept LLZ for ILS approach

TANOB VISUAL ARRIVAL

- Will be issued by Langkawi ATC when pilot reports visual terrain reference
- \* From TANOB track 302° direct to intercept final approach track for visual approach Runway 03

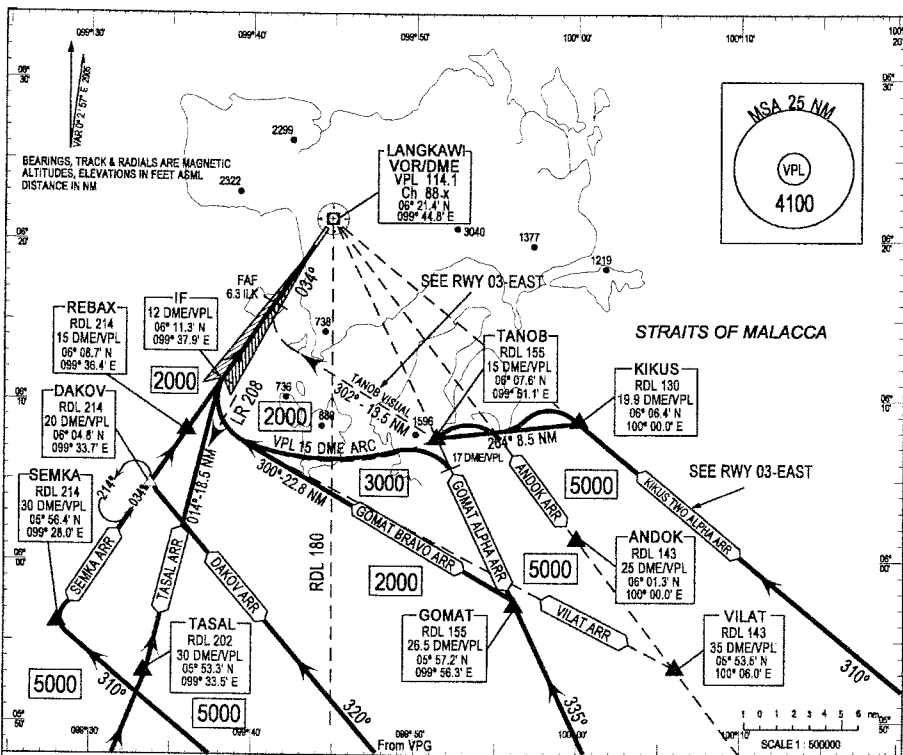


STANDARD ARRIVAL CHART  
INSTRUMENT (STAR) - ICAO

TRANSITION ALTITUDE  
11000ft

TWR 118.5  
281.1  
APP 119.4  
121.5  
ATIS 128.2

LANGKAWI / LANGKAWI  
RWY 03 - SOUTH



SEMKA ARRIVAL

- \* From VPG VOR track on 310° to SEMKA
- \* Intercept RDL 214 VPL VOR
- \* Descend to 5000 ft
- \* After SEMKA descend to 2000 ft
- \* Intercept LLZ for ILS approach

TASAL ARRIVAL

- \* From MEDAN intercept RDL 022 VPL to TASAL
- \* Descend to 5000 ft
- \* From TASAL track 014° to IF descend to 2000 ft
- \* Intercept LLZ for ILS approach

GOMAT BRAVO ARRIVAL

- \* From GOMAT track 300° to REBAX
- \* Descend to 2000ft
- \* Intercept LLZ for ILS approach

DAKOV ARRIVAL

- \* From VPG track on 320° to DAKOV
- \* Descend to 4000 ft
- \* Intercept RDL 214 VPL VOR
- \* After DAKOV descend to 2000ft
- \* Intercept LLZ for ILS approach

GOMAT ALPHA ARRIVAL

- \* From GOMAT track 335° to TANOB
- \* Descend to 5000 ft
- \* Turn left to fly 15 DME Arc, descend to 3000 ft
- \* On crossing RDL 180 VPL descend to 2000 ft
- \* Intercept LLZ for ILS approach

VILAT ARRIVAL

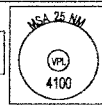
- \* From VILAT track 297° to REBAX, not below 8000ft
- \* On crossing RDL 155 VPL descend to 2000ft
- \* On crossing LR-208 turn right to intercept LLZ for ILS approach

ANDOK ARRIVAL

- \* From ANDOK track 323° to VPL, not below 8000ft
- \* At 20 DME VPL descend to 5000ft
- \* At 17 DME VPL turn left to fly 15 DME Arc, descend to 3000ft
- \* On crossing RDL 180 VPL descend to 2000ft
- \* On crossing LR-208, turn right to intercept LLZ for ILS approach

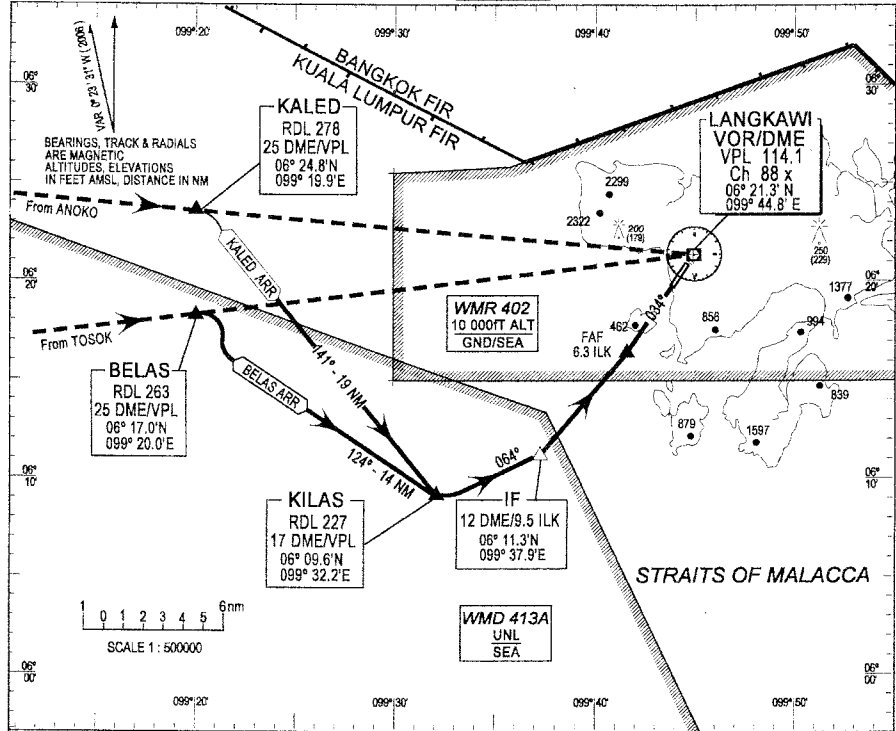
STANDARD ARRIVAL CHART  
INSTRUMENT (STAR) - ICAO

TRANSITION ALTITUDE  
11000ft



TWR 118.5  
281.1  
APP 119.4  
257.8  
ATIS 128.2

LANGKAWI/LANGKAWI  
RWY 03 - WEST



KALED ARRIVAL

- \* From ANOKO intercept R-278 VPL
- \* Descend to 7000 ft
- \* At KALED track 141° to KILAS
- \* Descend to 2000 ft
- \* At KILAS turn left heading 064° to intercept LLZ for ILS approach

BELAS ARRIVAL

- \* From TOSOK intercept R-263 VPL
- \* Descend to 7000 ft
- \* At BELAS track 124° to KILAS
- \* Descend to 2000 ft
- \* At KILAS turn left heading 064° to intercept LLZ for ILS approach

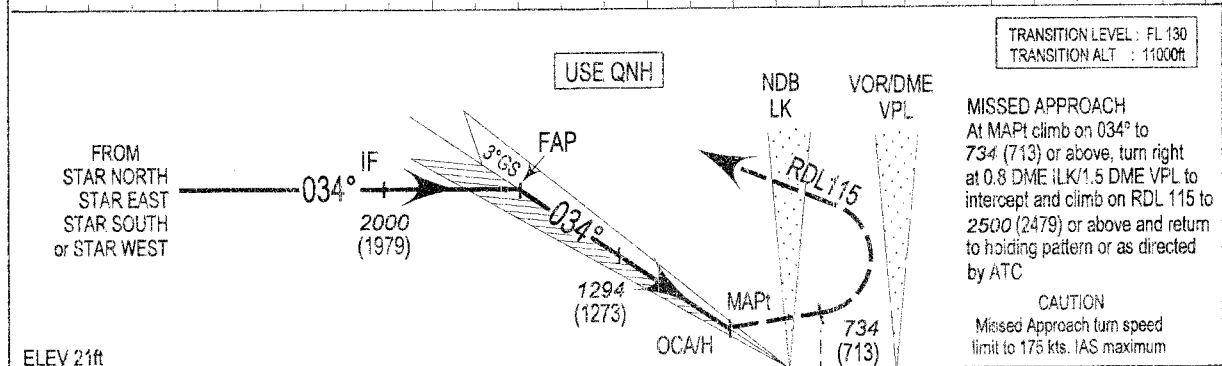
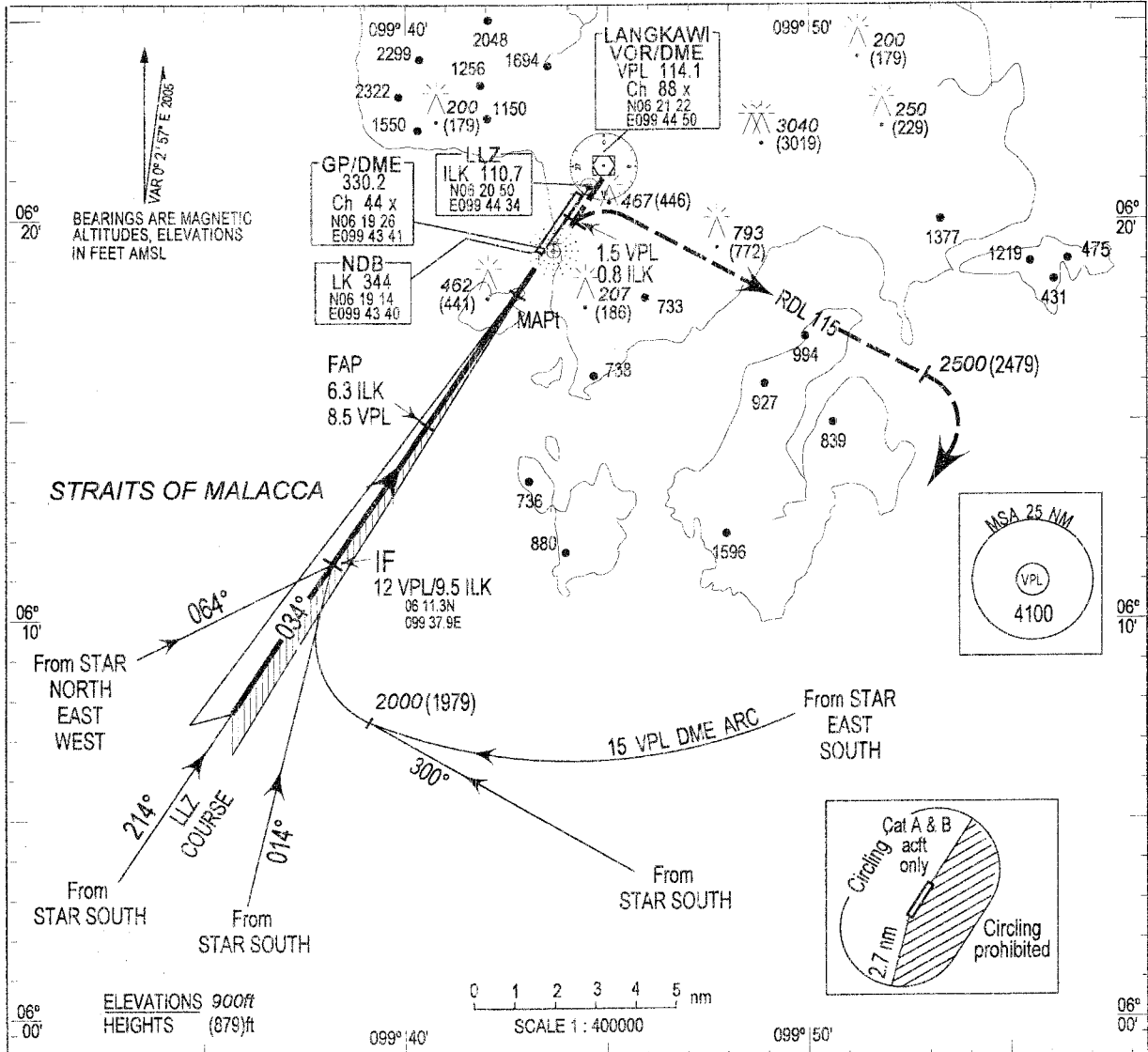
**INSTRUMENT APPROACH CHART - ICAO**

**AD ELEV 29ft**  
 HEIGHTS RELATED TO DISP  
 THR RWY 03 - ELEV 21ft  
 ILS REF. DATUM 53R

TWR 118.5  
 281.1  
 APP 119.4  
 121.5  
 ATIS 128.2

**LANGKAWI/LANGKAWI**  
 PENINSULAR MALAYSIA  
**ILS/DME**  
**RWY 03**

Entry from STAR NORTH, EAST, SOUTH or WEST



ELEV 21ft

THR RWY 03

NM FROM ILK

NM FROM VPL	15	10	5	0		
OCA (OCH)						
Cat of Aircraft	A	B	C	D		
Cat 1 Pres Alt	602 (581)	614 (593)	622 (601)	633 (612)		
LLZ / DME	710 (589) - 2.1 ILK / 4.6 VPL					
Circling	760 (739)			PROHIBITED		
CAUTION : Missed Approach turn speed limitation : 175 kts IAS maximum						
TIME TO THR RWY 03 FROM FAP DISTANCE 6.1 NM						
Ground speed (kts)	70	90	120	150	180	210
Min : Sec	5:13	4:04	3:04	2:26	2:02	1:44
3° (5%) Desc. (ft/min)	373	479	633	801	959	1125

\* Left hand circuit only

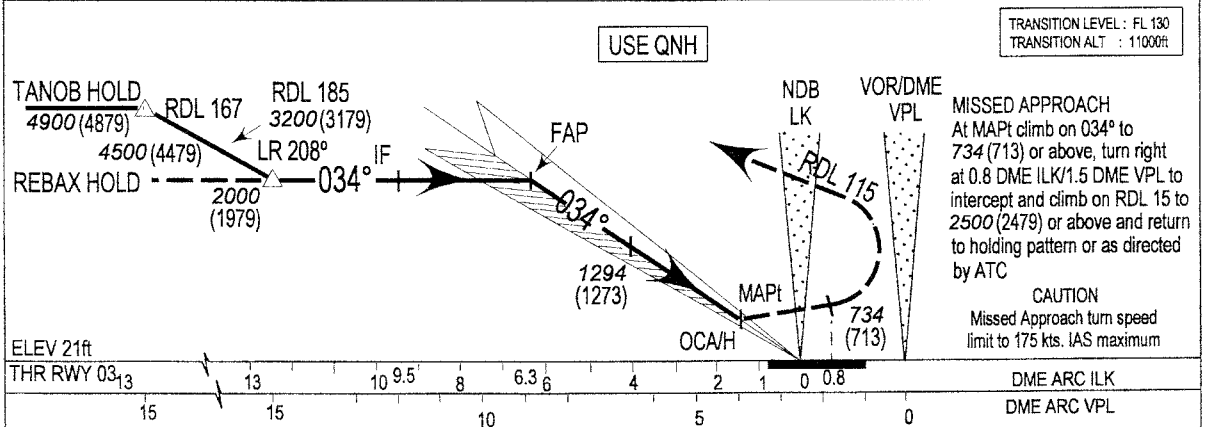
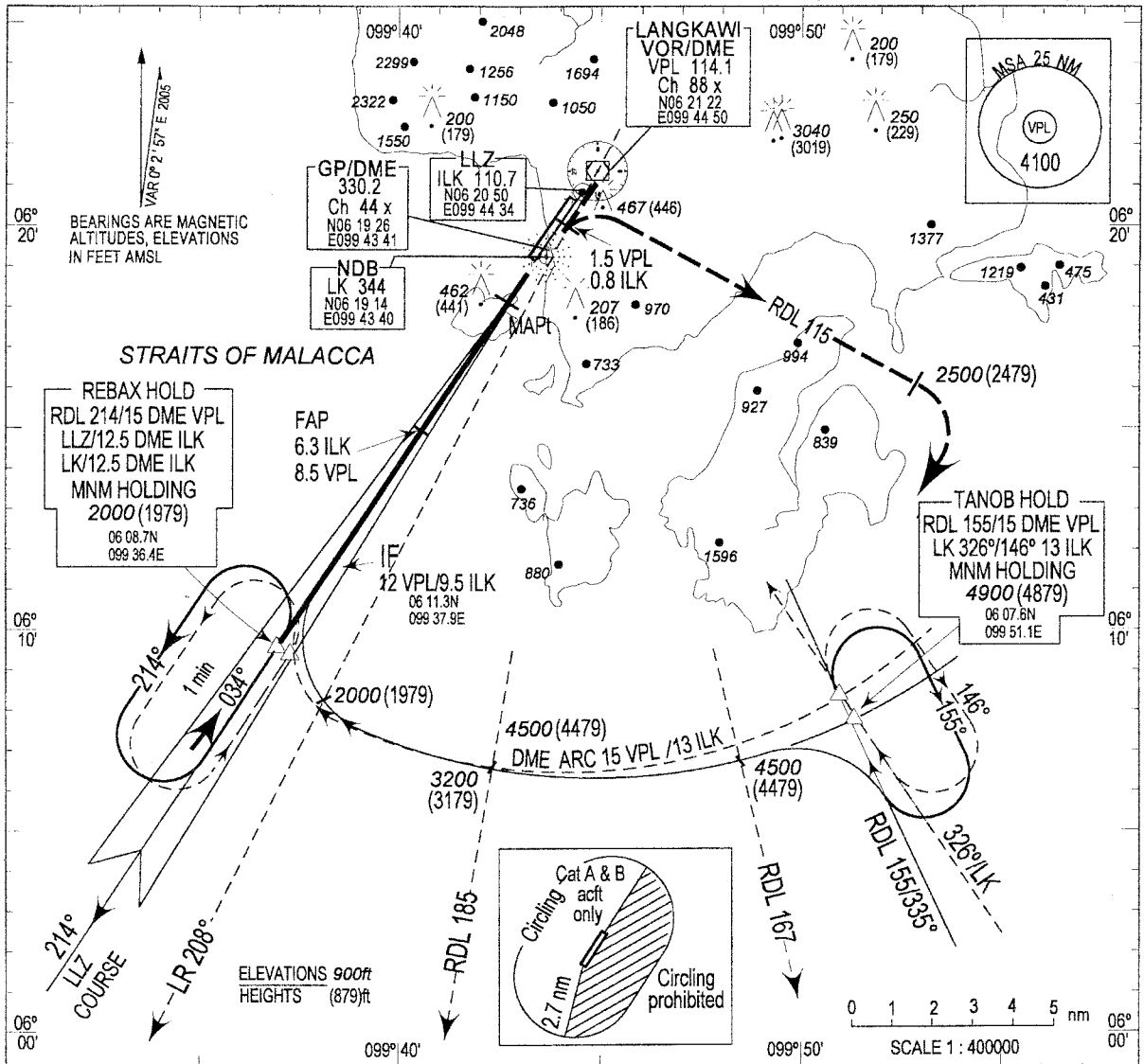
**INSTRUMENT  
APPROACH  
CHART - ICAO**

**AD ELEV 29ft**  
HEIGHTS RELATED TO DISP  
THR RWY 03 - ELEV 21ft  
ILS REF. DATUM 53ft

TWR 118.5  
281.1  
APP 119.4  
121.5  
ATIS 128.2

**LANGKAWI/LANGKAWI**  
PENINSULAR MALAYSIA  
**ILS/DME**  
**RWY 03**

Entry from TANOB or REBAX Holding Patterns

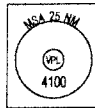


OCA (OCH)						
Cat of Aircraft	A	B	C	D		
Cat 1 Pres Alt	602 (581)	614 (593)	622 (601)	633 (612)		
LLZ / DME	710 (689) - 2.1 ILK / 4.6 VPL					
Circling	* 760 (739)		PROHIBITED			
CAUTION :	Missed Approach turn speed limitation : 175 kts IAS maximum					
TIME TO THR RWY 03 FROM FAP DISTANCE 6.1 NM						
Ground speed (kts)	70	90	120	150	180	210
Min : Sec	5:13	4:04	3:04	2:26	2:02	1:44
3° (5%) Desc. (ft/min)	373	479	636	801	959	1125

\* Left hand circuit only

**INSTRUMENT APPROACH CHART - ICAO**

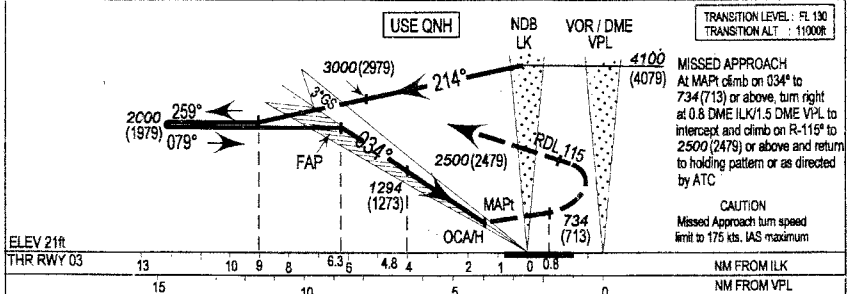
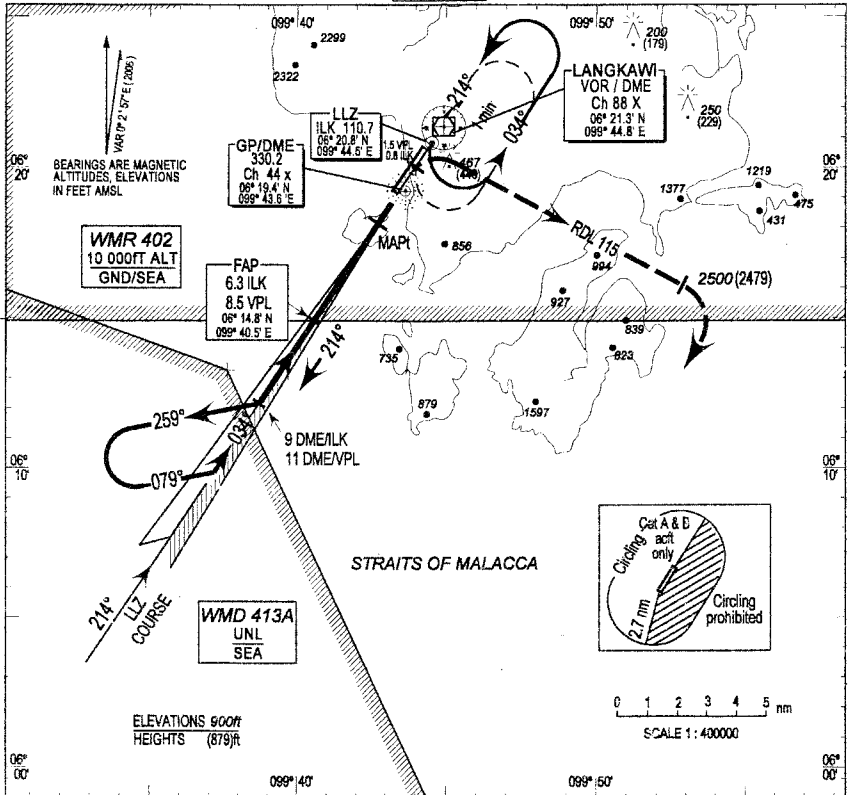
**AD ELEV 29ft**  
 HEIGHTS RELATED TO DISP  
 THR RWY 03 - ELEV 21ft  
 ILS REF. DATUM 53ft



TWR 118.5  
 281.1  
 APP 119.4  
 257.8  
 ATIS 128.2

**LANGKAWI/LANGKAWI ILS/DME RWY 03**

Entry from VPL or LK Holding Patterns



**USE QNH**      **NDB LK**      **VOR / DME VPL**      **TRANSITION LEVEL: FL 130**  
**TRANSITION ALT : 11000ft**

**MISSED APPROACH**  
 At MAPt climb on 034° to 734 (713) or above, turn right at 0.8 DME ILK/1.5 DME VPL to intercept and climb on R-115° to 2500 (2479) or above and return to holding pattern or as directed by ATC

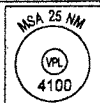
**CAUTION**  
 Missed Approach turn speed limit to 175 kts. IAS maximum

	OCA/H					
	A	B	C	D		
Cat of Aircraft	A	B	C	D		
Cat 1 Pres Alt	602 (581)	614 (593)	622 (601)	633 (612)		
LLZ / DME		*760 (739) - 2.1 ILK / 4.6 VPL				
Circling	* 760 (739) <b>PROHIBITED</b>					
<b>CAUTION:</b> Missed Approach turn speed limitation : 175 kts IAS maximum						
<b>TIME TO THR RWY 03 FROM FAP DISTANCE 6.1 NM</b>						
Ground speed (kts)	70	90	120	150	180	210
Min : Sec	5:13	4:04	3:04	2:26	2:02	1:44
3° (5%) Desc. (ft/min)	373	479	636	801	959	1125

\* Left hand circuit only

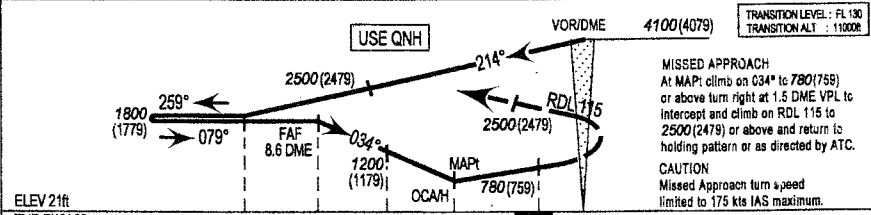
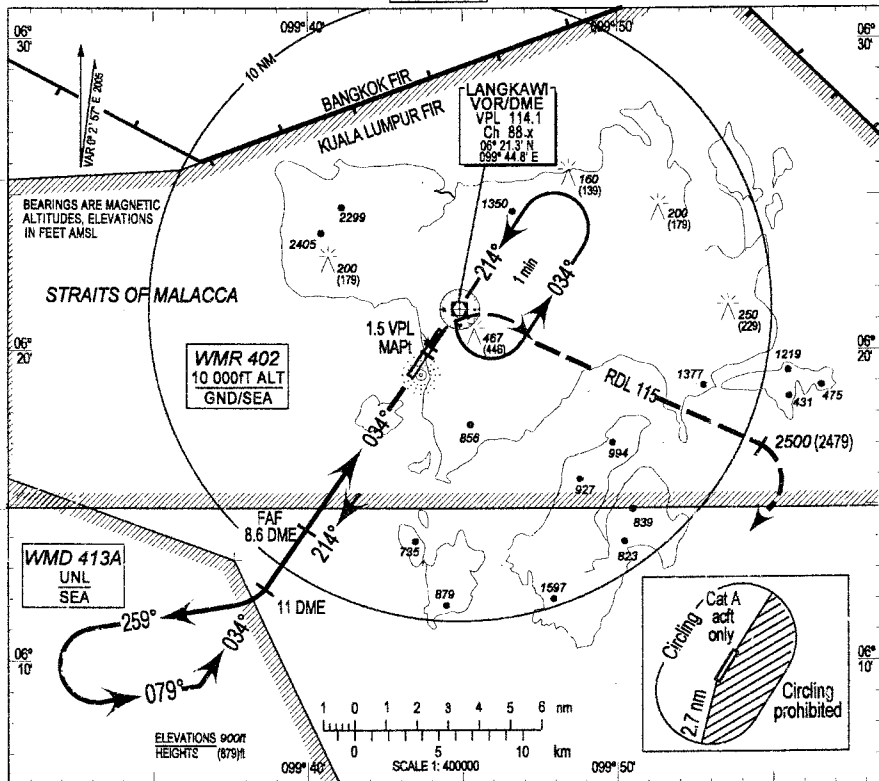
**INSTRUMENT APPROACH CHART - ICAO**

**AD ELEV 29ft**  
 HEIGHTS RELATED TO  
 THR RWY 03 - ELEV 21ft



**TWR 118.5**  
 281.1  
**APP 119.4**  
 257.8  
**ATIS 128.2**

**LANGKAWI/LANGKAWI VOR/DME VPL RWY 03**



NM FROM VPL

OCA / H				
Cat of Aircraft	A	B	C	D
VOR/LOCATOR	710(689) / 4.3 VPL			
CAUTION :	*760(739) PROHIBITED			
Missed Approach turn speed limitation : 175 kts IAS maximum				

TIME TO THR RWY 03 FROM FAP DISTANCE 8 NM

Ground speed (kts)	70	90	120	150	180	210
Min : Sec	5:13	4:04	3:04	2:26	2:02	1:44
4.8% Desc. (ft/min)	335	417	547	720	875	1011

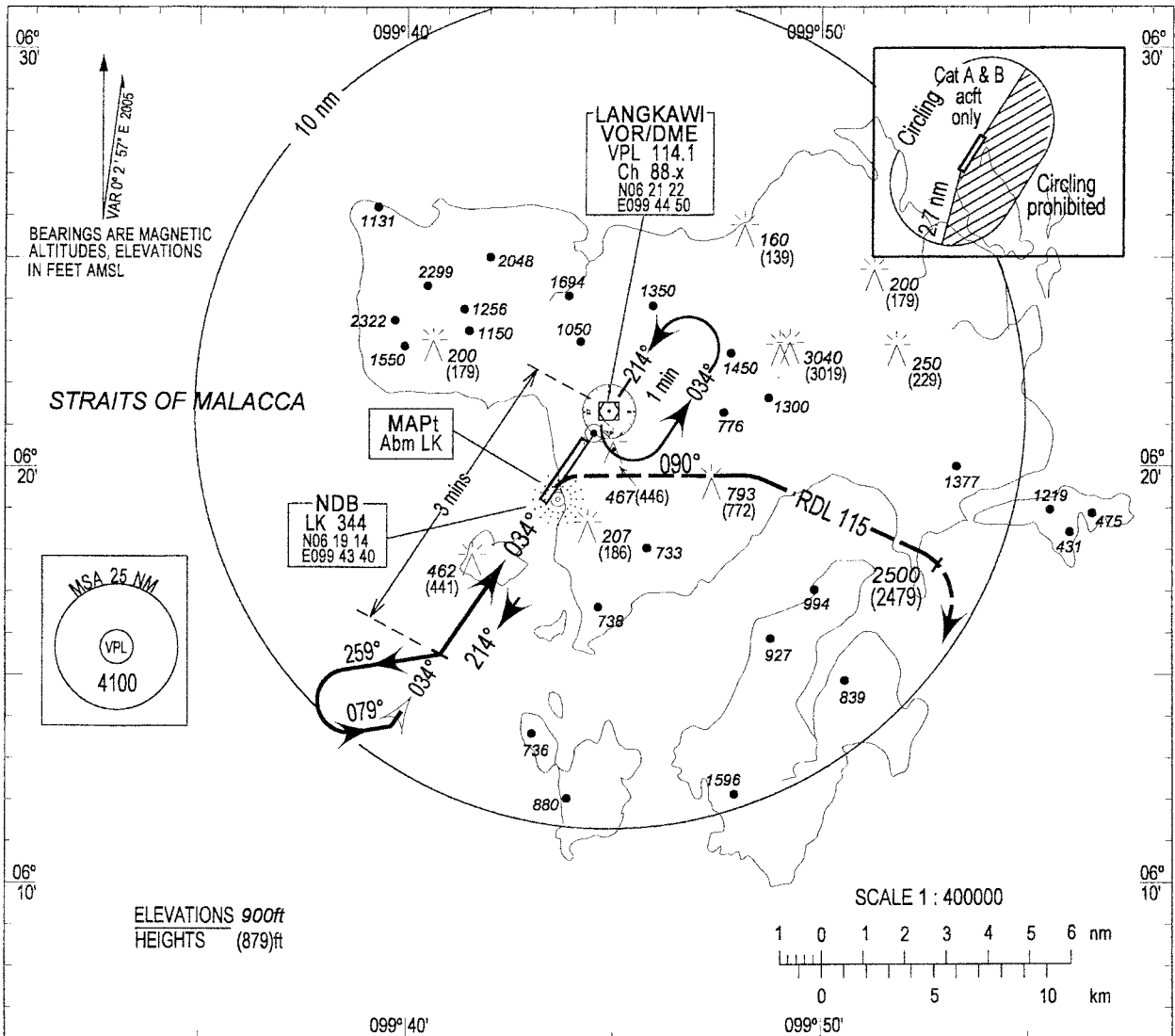
\* Left hand circuit only

**INSTRUMENT  
APPROACH  
CHART - ICAO**

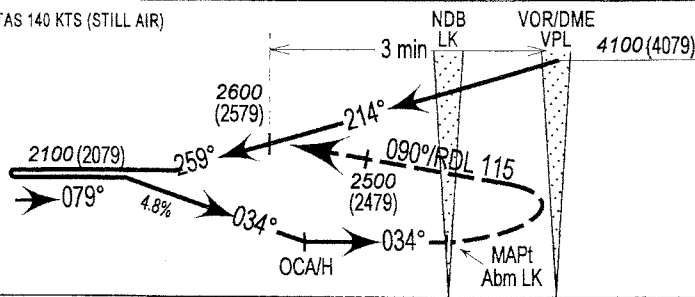
**AD ELEV 29ft**  
HEIGHTS RELATED TO  
THR RWY 03 - ELEV 21ft

TWR 118.5  
281.1  
APP 119.4  
121.5  
ATIS 128.2

**LANGKAWI/LANGKAWI**  
PENINSULAR MALAYSIA  
**VOR/NDB**  
**RWY 03 (CAT A & B)**



BASED ON TAS 140 KTS (STILL AIR)



**USE QNH**

TRANSITION LEVEL : FL 130  
TRANSITION ALT : 11000ft

**MISSED APPROACH**

At MAPt (abeam LK) turn right and climb on 115° to 2500 (2479) or above and return to holding pattern or as directed by ATC.

**CAUTION**

Missed Approach Turn Speed limited to 175 KTS IAS maximum.

ELEV 21ft  
THR RWY 03

NM FROM VPL	OCA / H			
	A	B	C	D
Cat of Aircraft				
VOR/LOCATOR	935 (914)		-	
Circling	*935 (914)		-	
CAUTION : Missed Approach turn speed limitation : 175 kts IAS maximum				

**TIME TO THR RWY 03 FROM FAPt DISTANCE 7 NM**

Ground speed (kts)	70	90	120	150	180	210
Min : Sec	6:15	4:37	3:30	2:48	-	-
4.8 % Desc. (ft/min)	328	445	586	732	-	-

\* Left hand circuit only

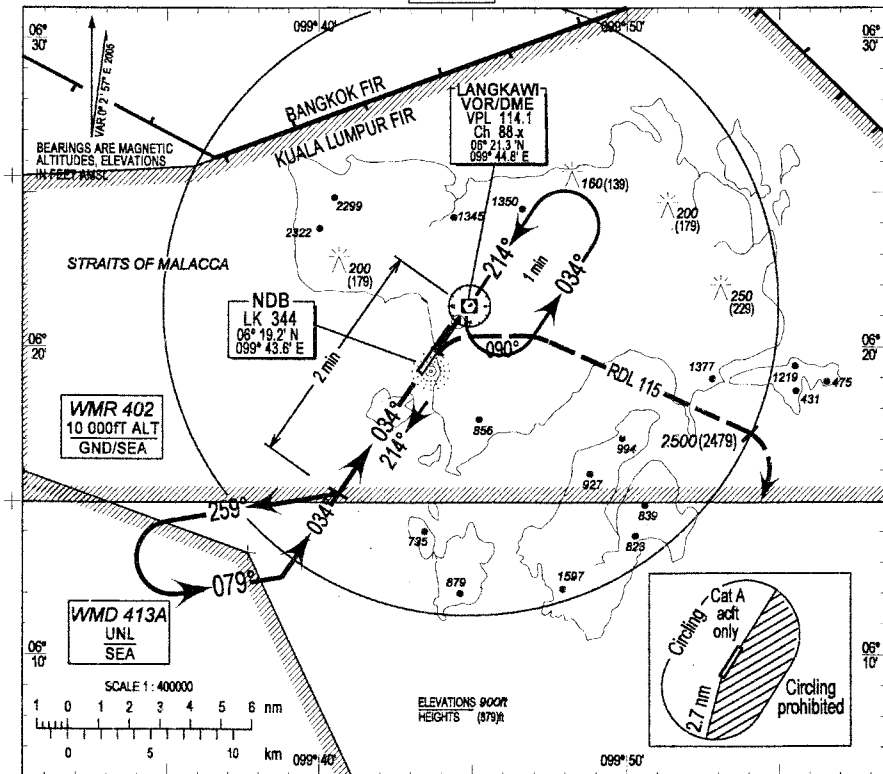
**INSTRUMENT  
APPROACH  
CHART - ICAO**

AD ELEV 29ft  
HEIGHTS RELATED TO  
THR RWY 03 - ELEV 21ft

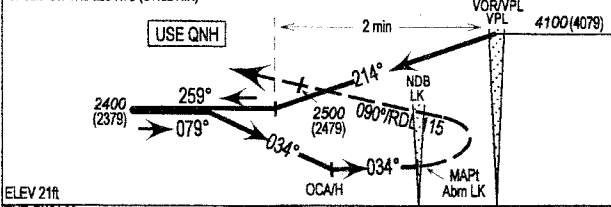


TWR 118.5  
281.1  
APP 119.4  
257.8  
ATIS 128.2

**LANGKAWI/LANGKAWI  
VOR/NDB  
RWY 03 (CAT C & D)**



BASED ON TAS 225 KTS (STILL AIR)



TRANSITION LEVEL: FL 130  
TRANSITION ALT: 11000ft

**MISSED APPROACH**  
At MAPt (abeam LK) turn right and heading 090° intercept and climb on RDL 115 to 2500 (2479) or above and return to holding pattern or as directed by ATC.

**CAUTION**  
Missed Approach turn speed limited to 180 kts IAS maximum.

ELEV 21ft  
THR RWY 03

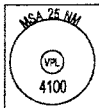
Cat of Aircraft	OCA / H			
	A	B	C	D
VOR/LOCATOR	-	-	935 (914)	-
Circling	-	-	PROHIBITED	
CAUTION:	Missed Approach turn speed limitation: 175 kts IAS maximum			

	TIME TO THR RWY 03 FROM FAP DISTANCE 8 NM				
	70	90	120	150	180
Ground speed (kts)	-	-	-	-	-
Min : Sec	-	-	4:00	3:12	2:39
4.8% Desc. (ft/min)	-	-	587	734	860



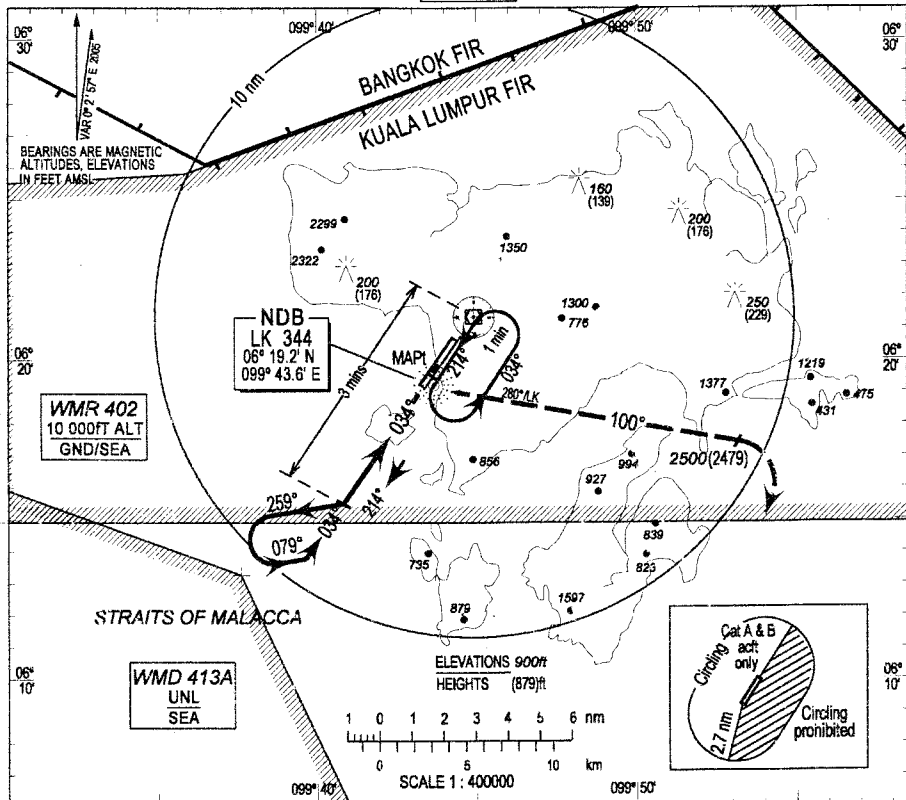
**INSTRUMENT  
APPROACH  
CHART - ICAO**

**AD ELEV 29ft**  
HEIGHTS RELATED TO DISP  
THR RWY 03 - ELEV 21ft

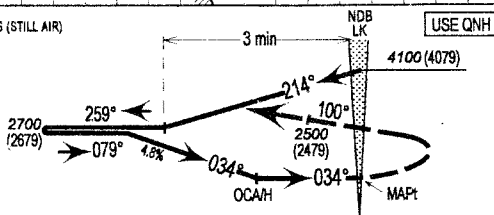


TWR 118.5  
281.1  
APP 119.4  
257.8  
ATIS 128.2

**LANGKAWI/LANGKAWI  
NDB  
RWY 03 (CAT A & B)**



BASED ON TAS 140 KTS (STILL AIR)



**MISSED APPROACH**  
At MAPt turn right and climb on 100° (LK 280°) to 2500 (2479) or above and return to holding pattern or as directed by ATC.

**CAUTION**  
Missed Approach Turn Speed limited to 175 KTS IAS maximum.

ELEV 21ft  
THR RWY 03

Cat of Aircraft	OCA/H			
	A	B	C	D
LOCATOR	960 (939)			
Circling	*960 (939)			
CAUTION: Missed Approach turn speed limitation: 175 kts IAS maximum				

	TIME TO THR RWY 03 FROM FAPt DISTANCE 9 NM					
	70	90	120	150	180	210
Ground speed (kts)	70	90	120	150	180	210
Min : Sec	7:42	6:00	4:30	3:36	-	-
4.8 % Desc. (ft/min)	344	442	588	736	-	-

\* Left hand circuit only