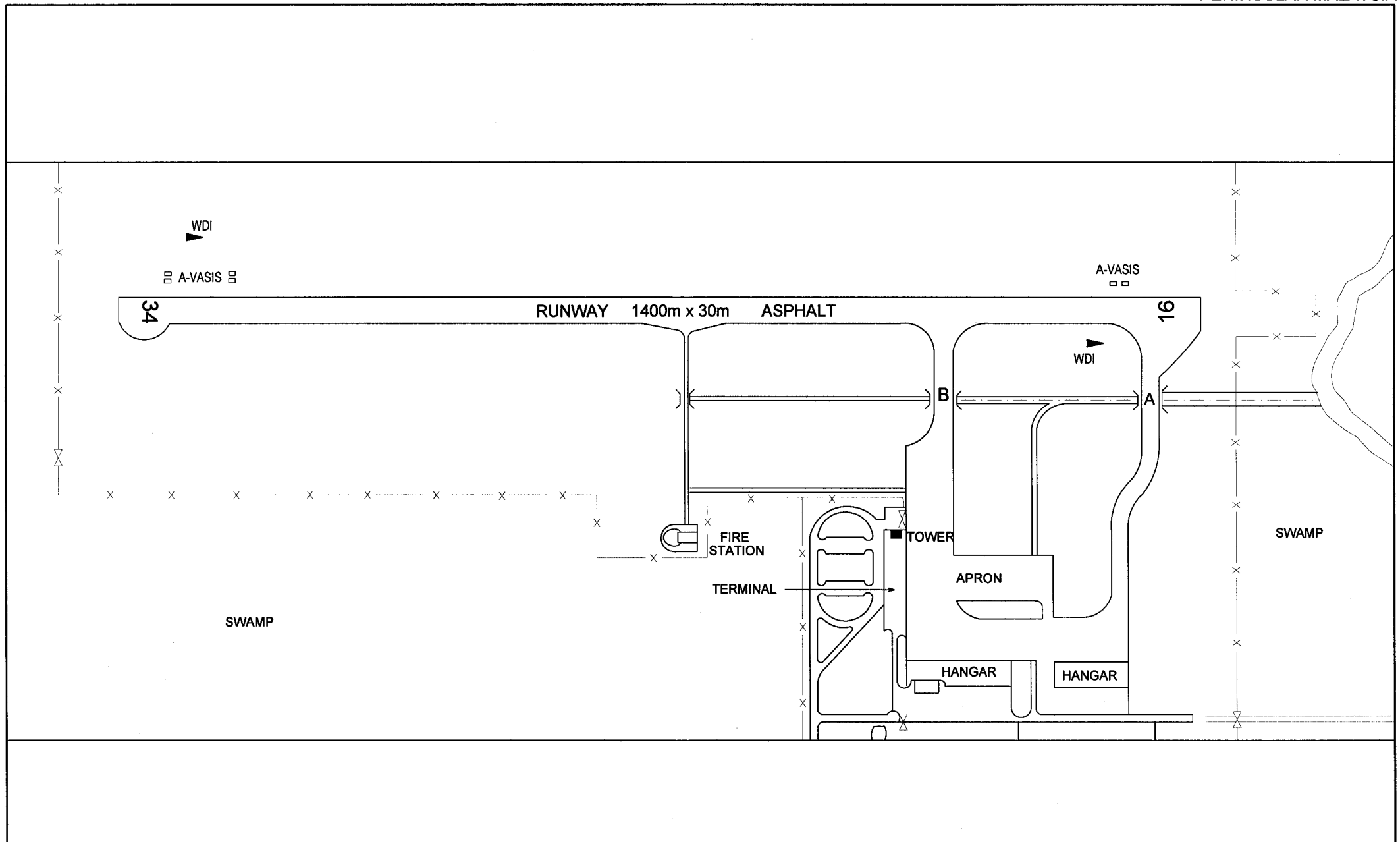
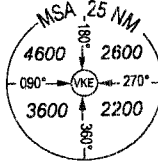

WMKE AD 2.24 CHARTS RELATED TO KERTEH AIRPORT

Chart Name	Page
AERODROME CHART - ICAO	WMKE AD 2 - 23
INSTRUMENT APPROACH CHART - ICAO - RWY 34 VOR/ILS DME	WMKE AD 2 - 81
INSTRUMENT APPROACH CHART - ICAO - RWY 34 VOR/DME	WMKE AD 2 - 83
INSTRUMENT APPROACH CHART - ICAO - RWY 16 VOR/DME	WMKE AD 2 - 85
INSTRUMENT APPROACH CHART - ICAO - RWY 34 VOR (CAT A & B)	WMKE AD 2 - 87
INSTRUMENT APPROACH CHART - ICAO - RWY 16 VOR (CAT C & D)	WMKE AD 2 - 89



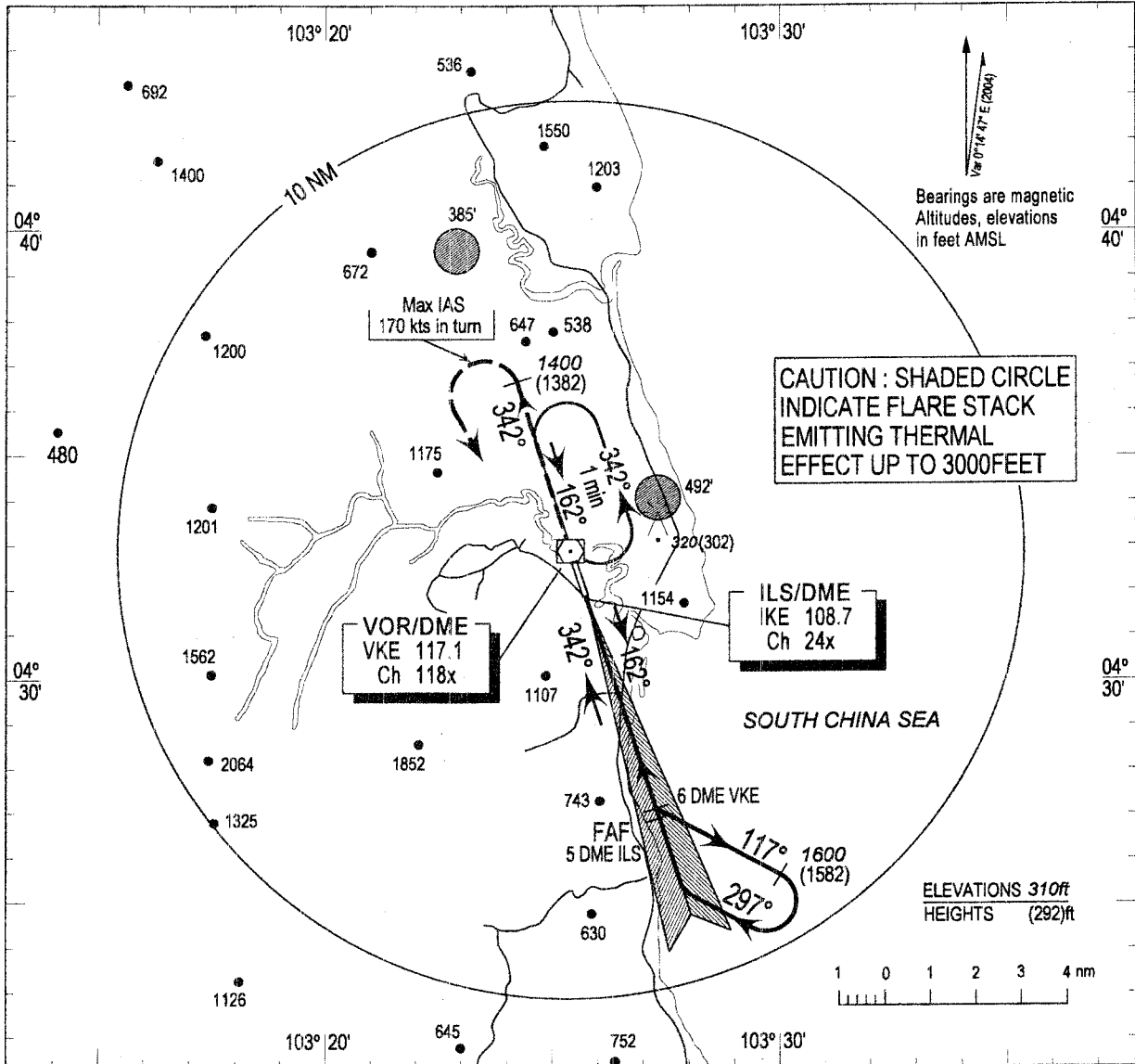
INSTRUMENT APPROACH CHART - ICAO

AD ELEV 18ft
HEIGHTS RELATED TO
THR RWY 34 - ELEV 18ft



TWR 123.3
258.5
121.8

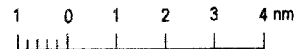
KERTEH/KERTEH
PENINSULAR MALAYSIA
VOR/ILS DME
RWY 34



CAUTION : SHADED CIRCLE INDICATE FLARE STACK EMITTING THERMAL EFFECT UP TO 3000FEET

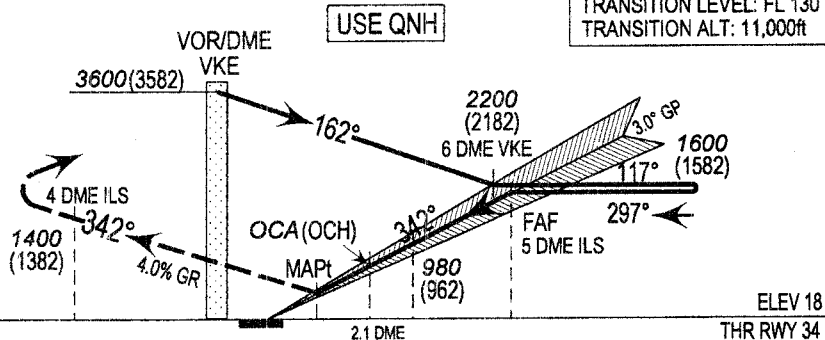
Bearings are magnetic
Altitudes, elevations
in feet AMSL

ELEVATIONS 310ft
HEIGHTS (292)ft



MISSED APPROACH

Climb straight ahead on heading 342° to 3600 (3582), turn left on passing 1400 (1382) or above by 4 DME ILS to VKE or as directed by ATC

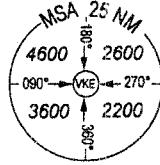


NM FROM VOR/DME

OCA(OCH)				
Cat of Aircraft	A	B	C	
Cat 1 - Pressure Alt	300 (282)	310 (292)	320 (302)	
LLZ / DME only (Glide Slope in-operative)	700 (682)			
Circling (Visual Maneuver)	Prohibited			
Time to Threshold Runway 34 from FAF distance 5.0 nautical miles				
ILS DME distance	5 DME	4 DME	3 DME	2 DME 1 DME
Altitude (Height)	1600(1582)	1290(1272)	980 (962)	660 (642) 330 (312)

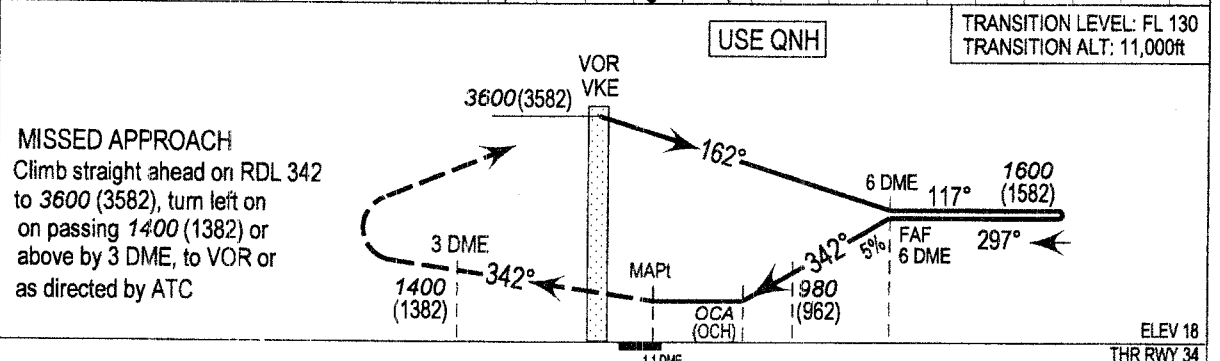
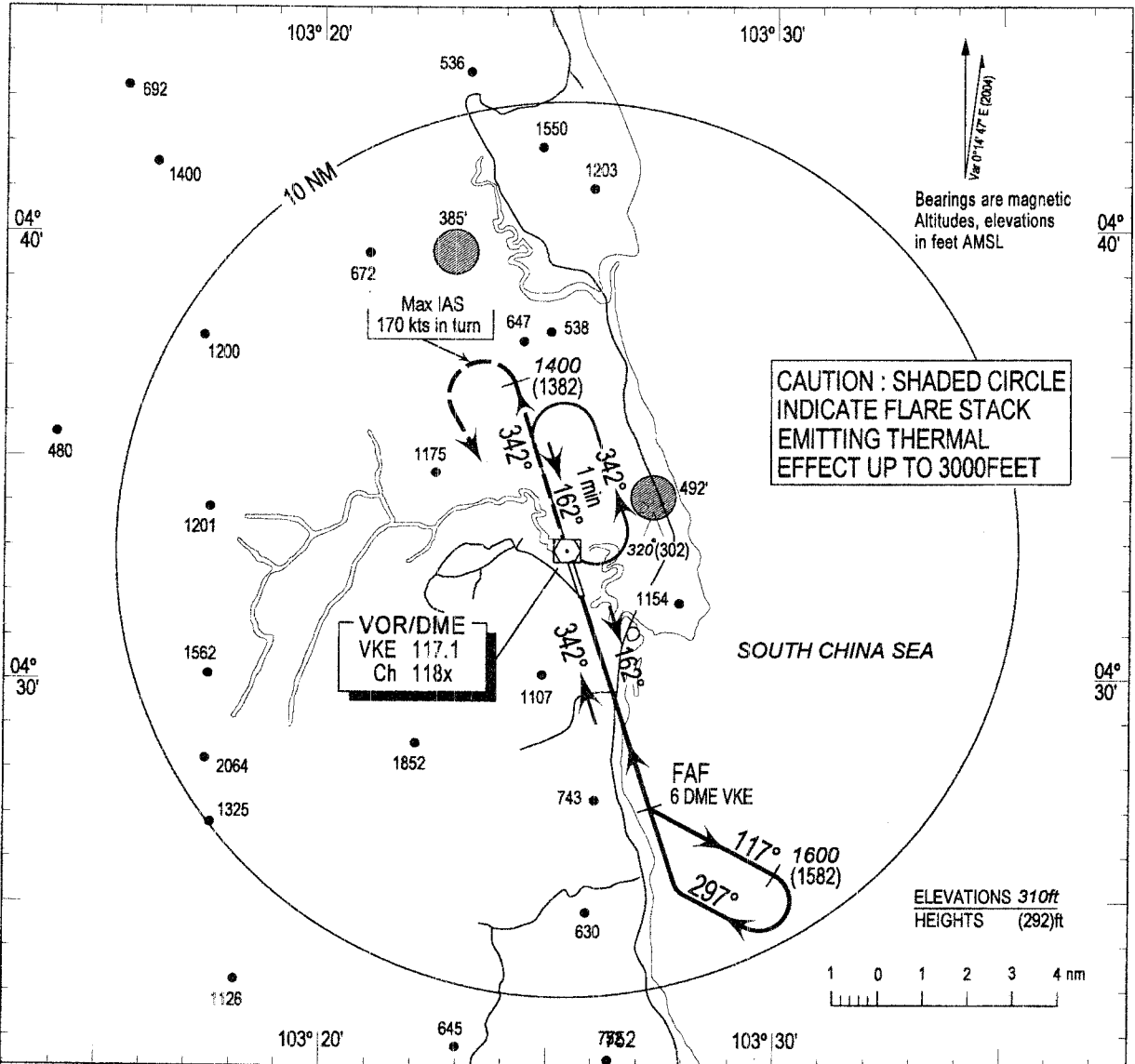
**INSTRUMENT
APPROACH
CHART - ICAO**

AD ELEV 18ft
HEIGHTS RELATED TO
THR RWY 34 - ELEV 18ft



TWR 123.3
121.8
258.5

KERTEH/KERTEH
PENINSULAR MALAYSIA
VOR/DME
RWY 34



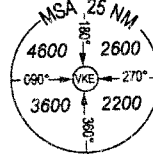
MISSED APPROACH
Climb straight ahead on RDL 342 to 3600 (3582), turn left on on passing 1400 (1382) or above by 3 DME, to VOR or as directed by ATC

OCA (OCH)

VOR/DME	750 (732)				
Circling (Visual Maneuver)	Prohibited				
Time to Threshold Runway 34 from FAF distance 5.0 nautical miles					
VKE DME distance	2 DME	3 DME	4 DME	5 DME	6 DME
Altitude (Height)	360 (342)	670 (652)	980 (962)	1290 (1272)	1600 (1582)
Ground Speed (knots)		70	90	120	150
3° Glide Path Rate of Descent (ft/min)		380	495	660	825

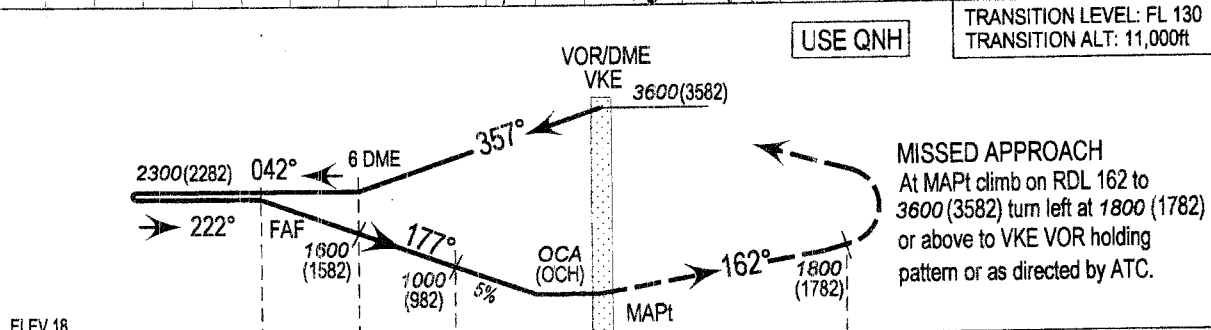
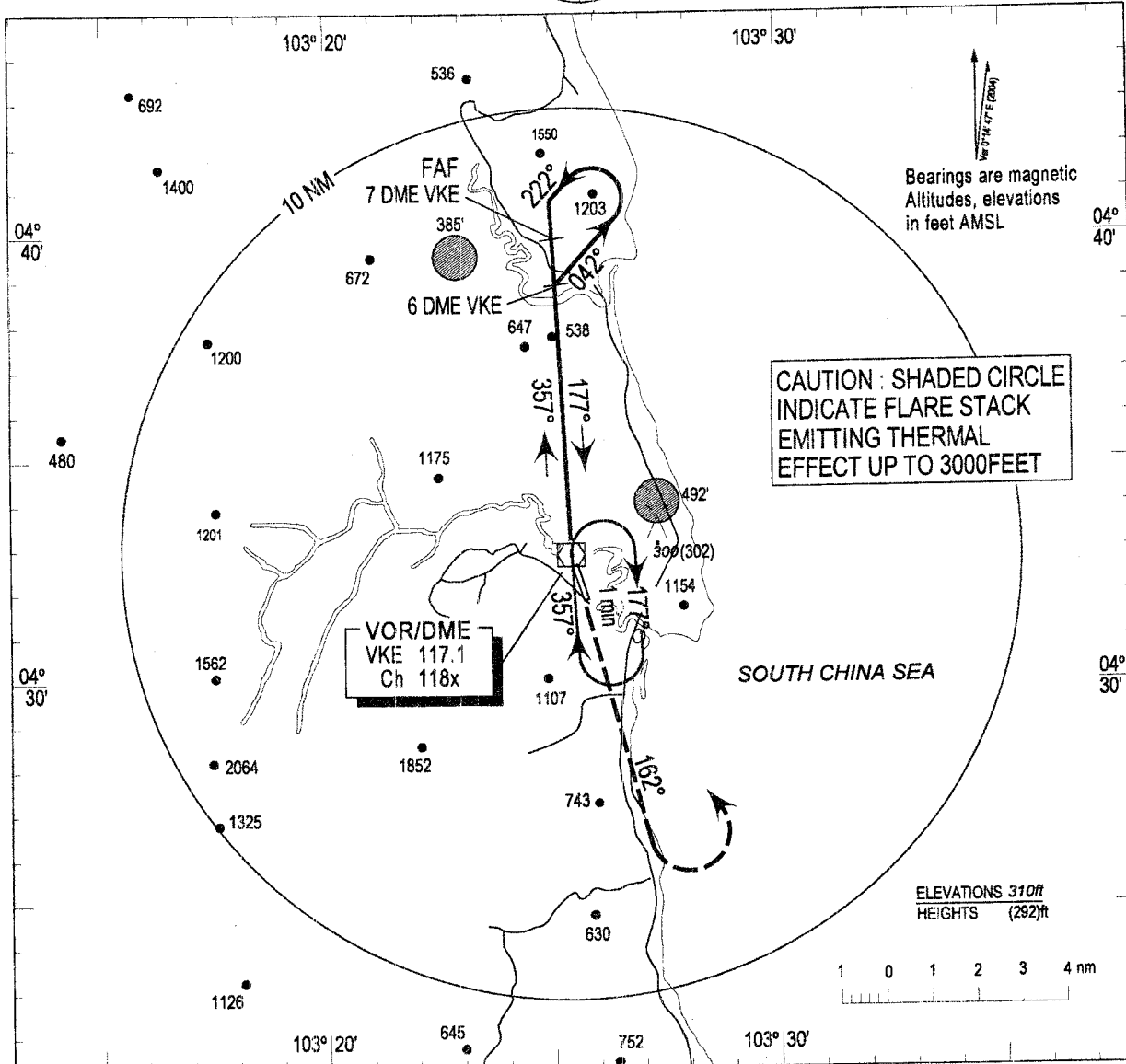
INSTRUMENT APPROACH CHART - ICAO

AD ELEV 18ft
HEIGHTS RELATED TO
THR RWY 34 - ELEV 18ft



TWR 123.3
258.5
121.8

KERTEH/KERTEH
PENINSULAR MALAYSIA
VOR/DME
RWY 16

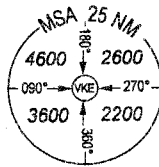


ELEV 18
THR RWY 16
NM FM DME VKE 9 8 7 6 5 4 3 2 1 0 1 2 3 4 5 6 7

OCA(OCH)					
VOR/DME			550 (532)		
CAUTION: CIRCLING PROHIBITED					
MAPt (VKE VOR) from FAF distance 7.0 nautical miles					
VKE DME distance	2 DME	3 DME	4 DME	5 DME	6 DME
Altitude (Height)	700 (682)	1000(982)	1300(1282)	1600(1582)	1900(1882)
Ground Speed (knots)		70	90	120	150
3° Glide Path Rate of Descent (ft/min)		360	460	620	770

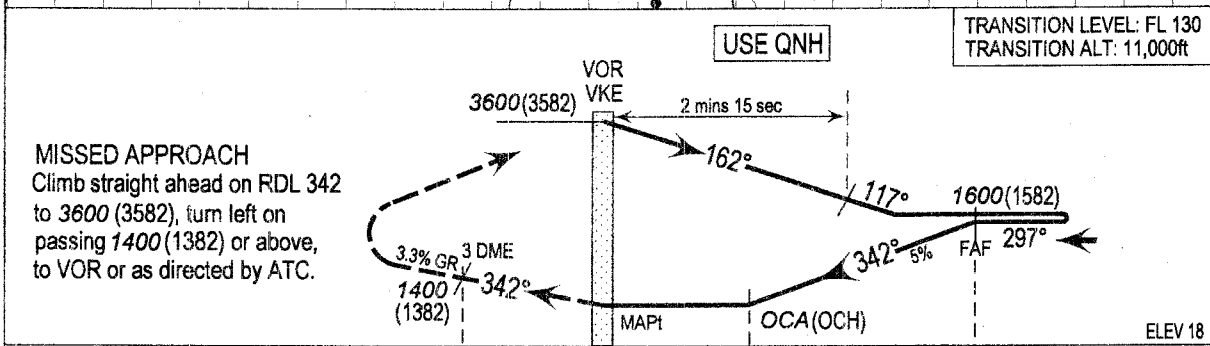
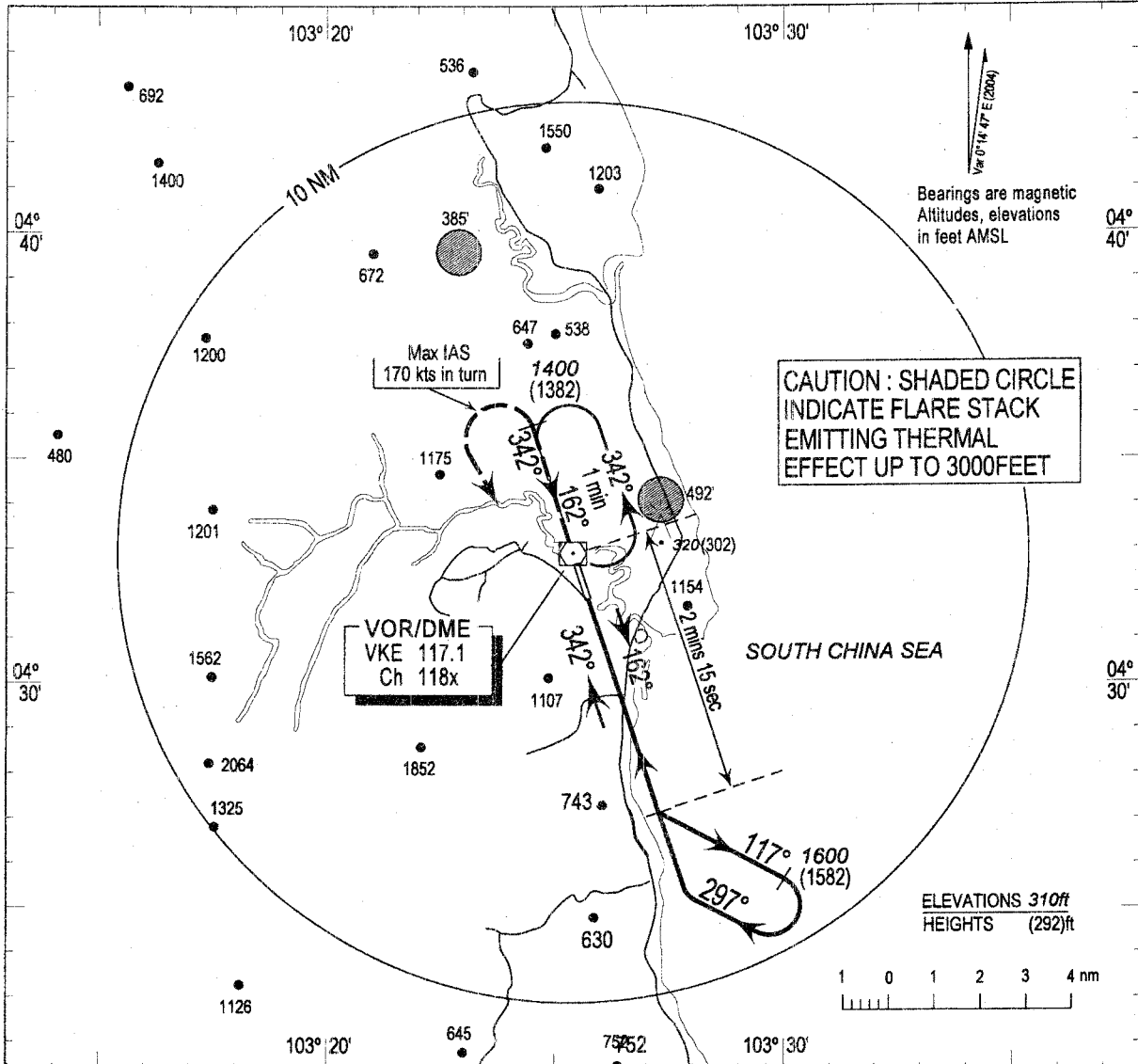
**INSTRUMENT
APPROACH
CHART - ICAO**

AD ELEV 18ft
HEIGHTS RELATED TO
THR RWY 34 - ELEV 18ft



TWR	123.3
	258.5
	121.8

KERTEH/KERTEH
PENINSULAR MALAYSIA
VOR
RWY 34 (CAT A & B)

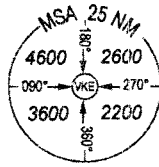


NM FROM VOR

OCA(OCH)				
VOR	800 (782)			
Circling (Visual Maneuver)	Prohibited			
Time to Threshold Runway 34 from FAF distance 5.0 nautical miles				
Ground Speed (knots)	70	90	120	150
Minute : Second	4:17	3:20	2:30	2:00
3° Glide Path Rate of Descent (ft/min)	380	495	660	825

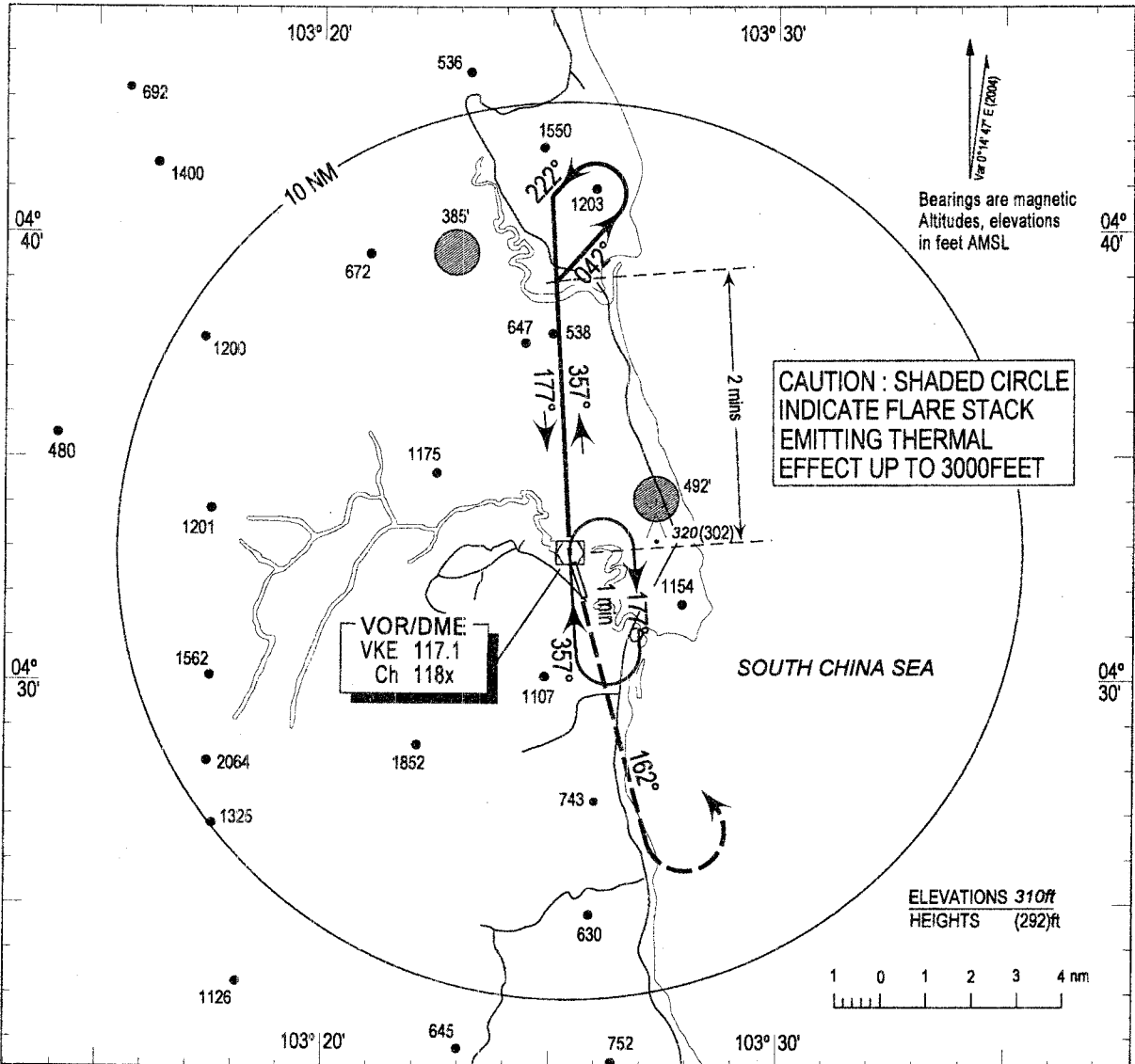
**INSTRUMENT
APPROACH
CHART - ICAO**

AD ELEV 18ft
HEIGHTS RELATED TO
THR RWY 34 - ELEV 18ft



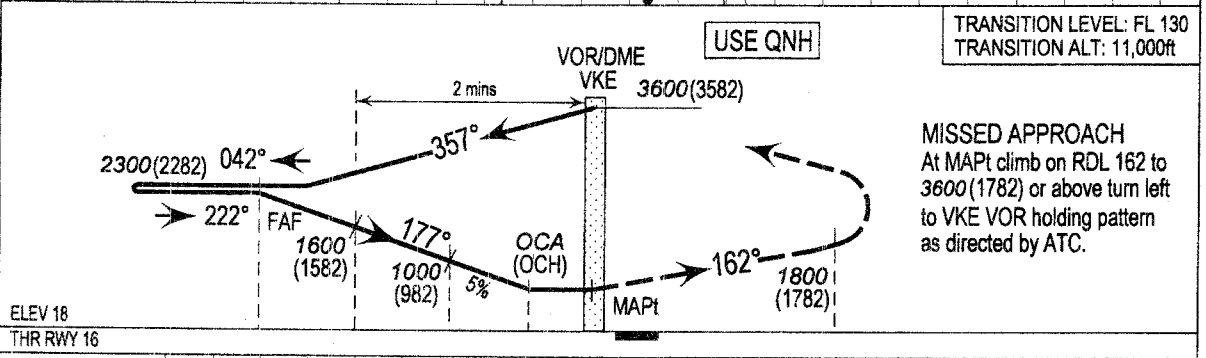
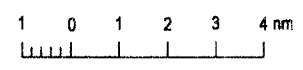
TWR	123.3
	258.5
	121.8

KERTEH/KERTEH
PENINSULAR MALAYSIA
VOR
RWY 16 (CAT A & B)



**CAUTION : SHADED CIRCLE
INDICATE FLARE STACK
EMITTING THERMAL
EFFECT UP TO 3000FEET**

ELEVATIONS 310ft
HEIGHTS (292)ft



TRANSITION LEVEL: FL 130
TRANSITION ALT: 11,000ft

MISSED APPROACH
At MAPt climb on RDL 162 to 3600 (1782) or above turn left to VKE VOR holding pattern as directed by ATC.

NM FM DME VKE 9 8 7 6 5 4 3 2 1 0 1 2 3 4 5 6 7

OCA (OCH)				
VOR/DME	750 (782)			
CAUTION:	CIRCLING PROHIBITED			
Time to MAPt Runway 16 (VKE VOR) from FAP distance 7.0 nautical miles				
Ground Speed (knots)	70	90	120	150
Minute : Second	6:17	4:52	3:39	2:55
5° Glide Path Rate of Descent (ft/min)	360	460	620	770