
AIP SUPPLEMENT MALAYSIA

PHONE: 6-03-8871 4000
FAX: 6-03-8881 0530
AFTN: WMKKYAYS

AERONAUTICAL INFORMATION SERVICES
DEPARTMENT OF CIVIL AVIATION
NO. 27, PERSIARAN PERDANA
LEVEL 1-4, PODIUM BLOCK,PRECINCT 4,
62618 PUTRAJAYA,
MALAYSIA

03/2016
18 FEB
AIRAC

KUALA LUMPUR FLIGHT INFORMATION REGION

SUBANG/SULTAN ABDUL AZIZ SHAH AIRPORT INTRODUCTION OF NEW BARO-VNAV INSTRUMENT APPROACH PROCEDURES

1 INTRODUCTION

- 1.1 The purpose of this AIP Supplement is to notify the aviation industry of the introduction of new APV/Baro-VNAV Instrument Approach Procedures for Subang/Sultan Abdul Aziz Shah Airport.
- 1.2 The information provided in this AIP Supplement is presented in an ICAO format similar to that applicable to the Aeronautical Information Publication.

2 INSTRUMENT FLIGHT PROCEDURES

2.1 NEW INSTRUMENT APPROACH PROCEDURES

- 2.1.1 New Instrument Approach Procedures RNAV (GNSS) RWY 15 and RNAV (GNSS) RWY 33 are introduced and are shown as follow:

APPENDIX - A1 INSTRUMENT APPROACH CHART - ICAO - RNAV (GNSS) RWY 15
APPENDIX - A2 INSTRUMENT APPROACH CHART - ICAO - RNAV (GNSS) RWY 33

3 IMPLEMENTATION

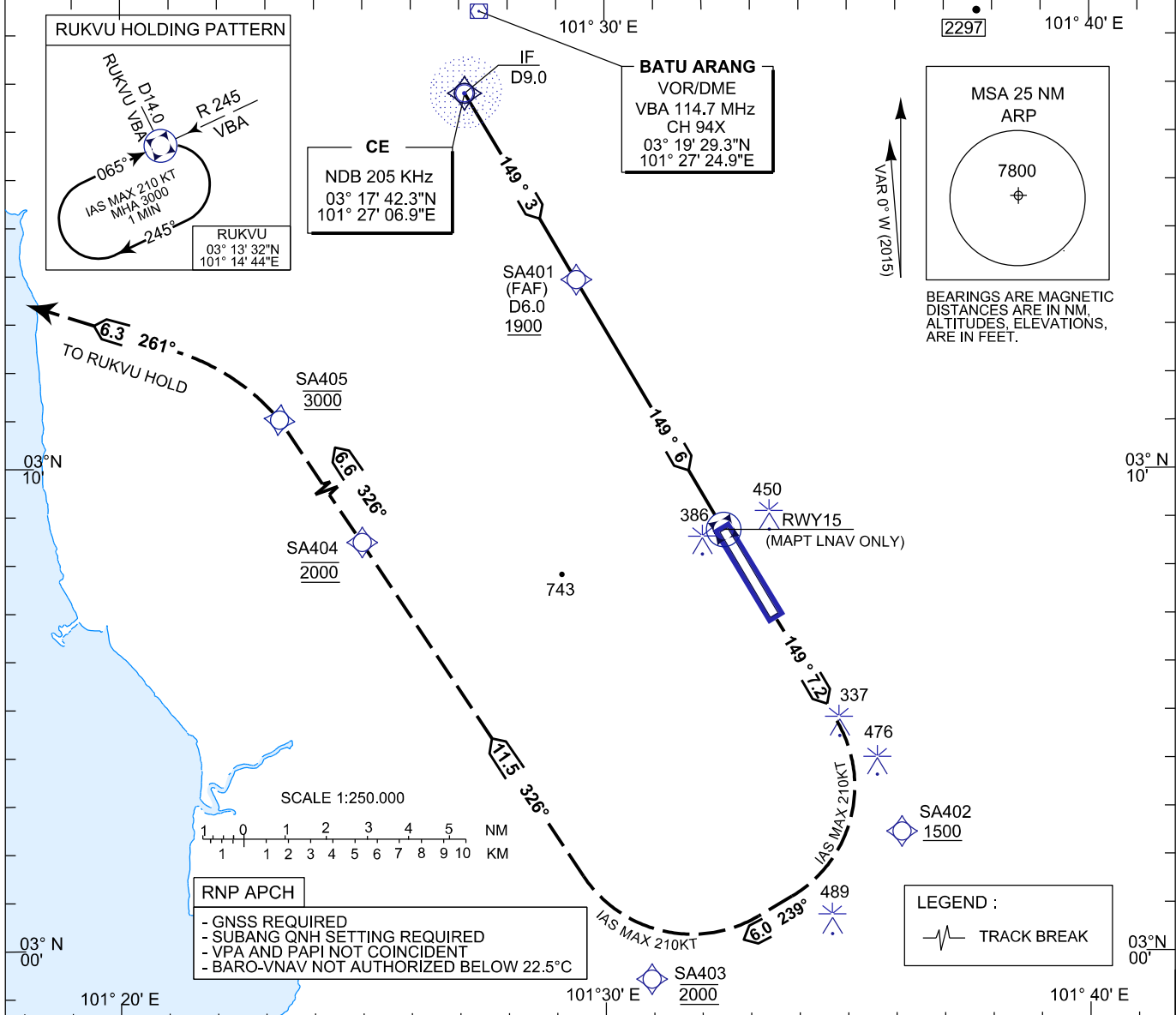
- 3.1 This AIP Supplement and relevant charts will become effective on 31 March 2016 at 0001 UTC. A trigger NOTAM will be issued on 17 March 2016.

4 CANCELLATION

- 4.1 This AIP Supplement will remain current until the information is published in AIP Malaysia.

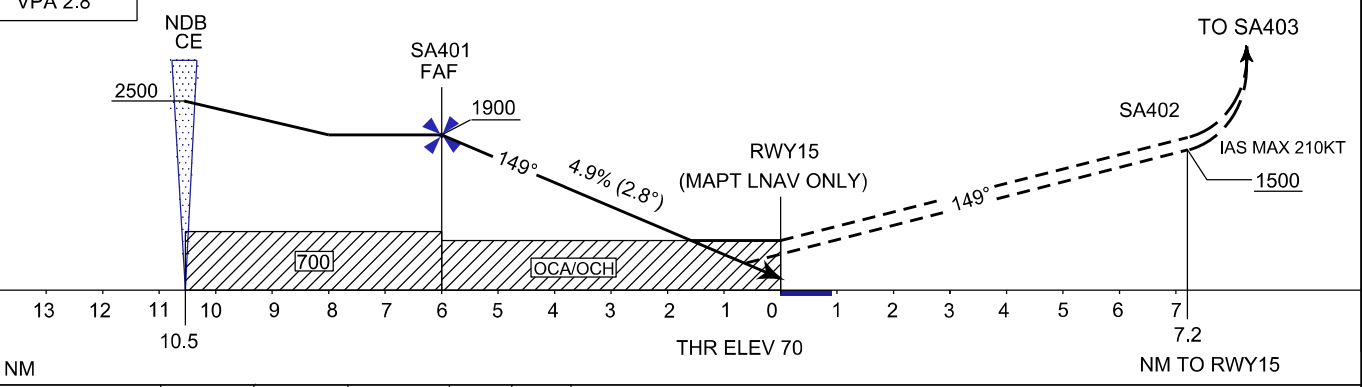
DATO' SRI AZHARUDDIN ABDUL RAHMAN
Director General
Department of Civil Aviation
Malaysia

INSTRUMENT APPROACH CHART - ICAO	AD ELEV 90 FT THR ELEV 70	FREQUENCIES		SUBANG (WMSA) SULTAN ABDUL AZIZ SHAH RWY15 RNAV (GNSS)
		APP 124.200 118.650 119.450	TWR 118.200 SMC 121.900 ATIS 127.600	



TRANSITION ALT 11000
 TCH 52FT
 VPA 2.8°

MISSED APPROACH : CLIMB TO 2000 FT. PROCEED TO SA402 ON TR149°. AT SA402 (1500 FT OR ABOVE) TURN RIGHT (IAS MAX 210 KT) TO SA403 (MAINTAIN 2000 FT). AT SA403 TURN RIGHT TO SA404. AT SA404, CLIMB TO 3000 FT PROCEED TO SA405 (MAINTAIN 3000 FT). AT SA405 TURN LEFT TO RUKVU OR AS DIRECTED BY ATC.



OCA (OCH)		A	B	C	D	DL
STRAIGHT IN APPROACH	LNAV	590 (520)				
	LNAV/VNAV	520 (450)	530 (460)	540 (470)	550 (480)	
CIRCLING		800(710)	1050(960)	1240(1150)	1700(1610)	

ALTITUDE/HEIGHT ON FINAL APPROACH				
NM TO RWY15	6	5	4	3
ALTITUDE (HGT)	1900 (1830)	1610(1540)	1310(1240)	1015(945)
NM TO RWY15	2	1		
ALTITUDE (HGT)	715(645)	420(350)		

INSTRUMENT **AERODROME ELEV 90 FT**
APPROACH **HEIGHTS RELATED TO**
CHART - ICAO **THR RWY 15 - ELEV 70 FT**

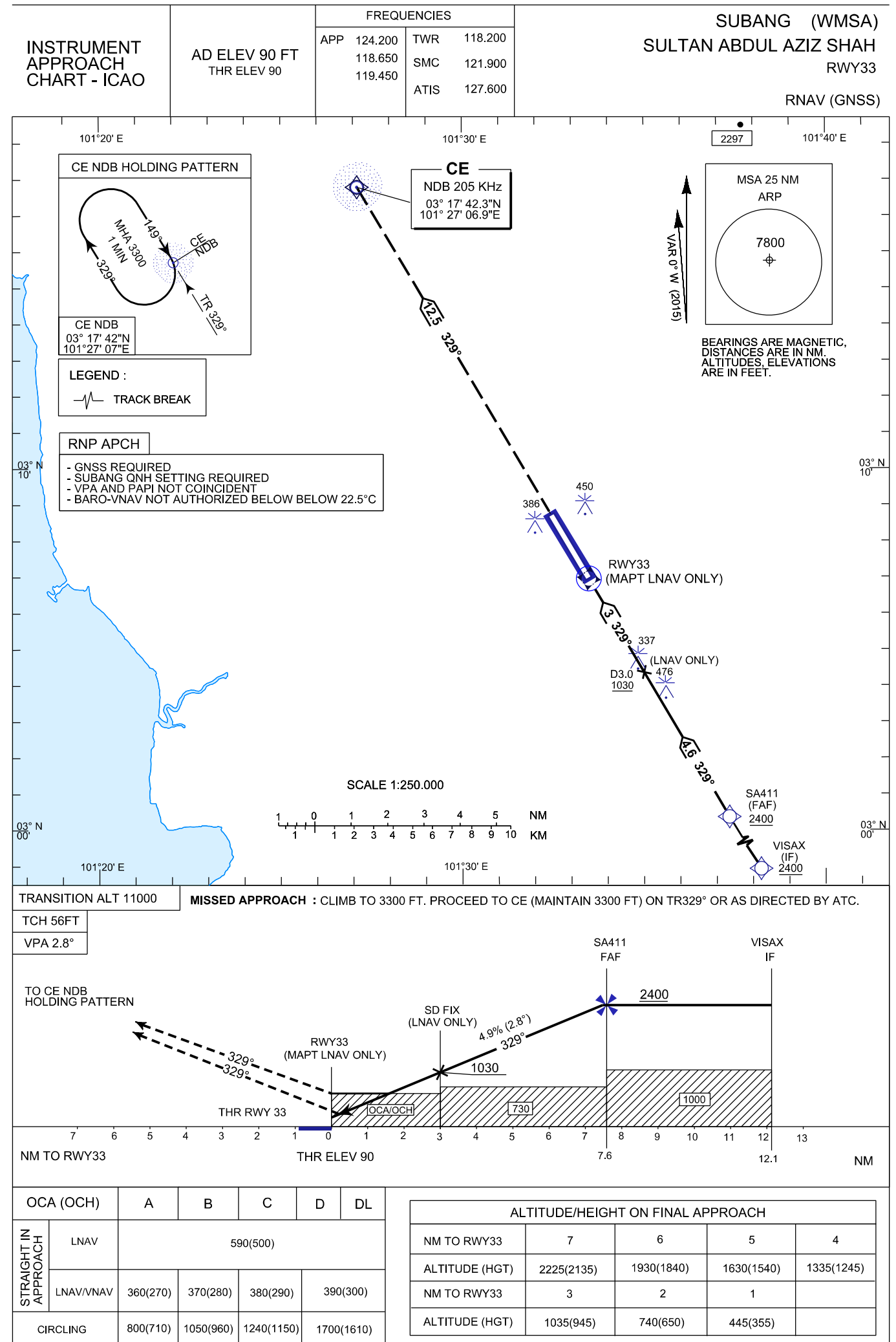
SUBANG (WMSA)
SULTAN ABDUL AZIZ SHAH
RNAV (GNSS) RWY 15

TABULAR DESCRIPTION
RNAV (GNSS) RWY15

Serial Number	Path Terminator	Waypoint Identifier	Fly Over	Course /Track °M	Distance (NM)	Turn Direction	Altitude	Speed Limit (kt)	Recommended Navaid	VPA/TCH	Navigation Specification
1	IF	CE NDB	-	-	-	-	+2500	-	-	-	RNP APCH
2	TF	SA401 (FAF)	-	149°	3.0	-	+1900	-	-	-	RNP APCH
3	TF	RWY15 (MAPt LNAV)	Y	149°	6.0	-	+590	-	-	2.8°/52	RNP APCH
4	TF	SA402	-	149°	7.2	-	+1500	210	-	-	RNP APCH
5	TF	SA403	-	239°	6.0	R	@2000	210	-	-	RNP APCH
6	TF	SA404	-	326°	11.5	R	@2000	-	-	-	RNP APCH
7	TF	SA405	-	326°	6.6	-	@3000	-	-	-	RNP APCH
8	TF	RUKVU	Y	261°	6.3	-	3000+	-	-	-	RNP APCH
9	HM	RUKVU	-	065°	-	R	3000+	-	VBA VOR/DME	-	RNP APCH

WAYPOINT LIST
RNAV (GNSS) RWY15

Waypoint Identifier	Coordinates
CE NDB	03°17'42.30"N 101°27'06.90"E
SA401	03°13'55.20"N 101°29'24.83"E
RWY15	03°08'43.27"N 101°32'26.72"E
SA402	03°02'28.21"N 101°36'06.45"E
SA403	02°59'24.71"N 101°30'56.58"E
SA404	03°09'00.05"N 101°24'37.46"E
SA405	03°14'30.81"N 101°20'59.49"E
RUKVU	03°13' 32.48"N 101°14'43.77"E



INSTRUMENT AERODROME ELEV 90 FT
APPROACH HEIGHTS RELATED TO
CHART - ICAO THR RWY 33 - ELEV 90 FT

SUBANG (WMSA)
SULTAN ABDUL AZIZ SHAH
RNAV (GNSS) RWY 33

TABULAR DESCRIPTION
RNAV (GNSS) RWY 33

Serial Number	Path Terminator	Waypoint Identifier	Fly Over	Course /Track °M	Distance (NM)	Turn Direction	Altitude	Speed Limit (kt)	Recommended Navaid	VPA/TCH	Navigation Specification
1	IF	VISAX	-	-	-	-	+2400	-	-	-	RNP APCH
2	TF	SA411 (FAF)	-	329°	4.5	-	+2400	-	-	-	RNP APCH
3	TF	RWY33 (MAPt LNAV)	Y	329°	7.6	-	+590	-	-	2.8° /56	RNP APCH
4	TF	CE NDB	Y	329°	12.5	-	+3300	-	-	-	RNP APCH
5	HM	CE NDB	-	149°	-	R	+3300	-	CE NDB	-	RNP APCH

WAYPOINT LIST
RNAV (GNSS) RWY 33

Fix Identifier (Waypoint Name)	Coordinates
VISAX	02°56'31.00"N 101°39'41.00"E
SA411	03°00'21.67"N 101°37'20.63"E
RWY33	03°06'57.17"N 101°33'28.89"E
CE NDB	03°17'42.30"N 101°27'06.90"E