

---

# AIP SUPPLEMENT MALAYSIA

PHONE: 6-03-8871 4000  
FAX: 6-03-8881 0530  
AFTN: WMKKYAYS

AERONAUTICAL INFORMATION SERVICES  
DEPARTMENT OF CIVIL AVIATION  
NO. 27, PERSIARAN PERDANA  
LEVEL 1-4, PODIUM BLOCK,PRECINCT 4,  
62618 PUTRAJAYA,  
MALAYSIA

22/2015  
28 SEP

---

## KUALA LUMPUR FLIGHT INFORMATION REGION WMKE – KERTEH AIRPORT APRON WIDENING AT KERTEH AIRPORT INTRODUCTION OF NEW HELICOPTER PARKING STANDS AT KERTEH AIRPORT

### 1 INTRODUCTION

- 1.1 The widened Helicopter Parking Apron at Kerteh Airport is expected to provide for additional helicopter parking stands.

### 2 PURPOSE

- 2.1 The purpose of this AIP Supplement is to notify the aviation industry of the new movement areas at the Helicopter Parking Apron and Taxiways at Kerteh Airport following the introduction of new helicopter parking stands arrangement.

### 3 HELICOPTER APRON PARKING CONFIGURATION

- 3.1 The Helicopter Parking Apron is designed to cater for the operation of helicopter types AW139 (or equivalent size) and EC225 (or equivalent size).
- 3.2 Helicopter parking stands provided for ground - taxi operations by wheeled helicopters and are designated as follows:

AIRCRAFT STAND NUMBER	AIRCRAFT TYPE or Equivalent size	WGS84 COORDINATES	
H1	AW139	4°32'30.25" N	105°25'39.3" E
H2	AW139	4°32'31.33" N	103°25'38.9" E
H3	AW139	4°32'32.42" N	103°25'38.6" E
H4	AW139	4°32'33.51" N	103°25'38.2" E
H5	AW139	4°32'30.78" N	103°25'40.9" E
H6	AW139	4°32'31.87" N	103°25'40.6" E
H7	EC225	4°32'33.48" N	103°25'40.1" E
H8	EC225	4°32'34.82" N	103°25'39.7" E
H9	EC225	4°32'31.34" N	103°25'42.7" E
H10	EC225	4°32'32.68" N	103°25'42.3" E
H11	EC225	4°32'32.73" N	103°25'41.8" E
H12	EC225	4°32'35.37" N	103°25'41.4" E

#### **4 MOVEMENT AREAS**

- 4.1 Air Traffic Control is solely responsible for regulating the flow of aircraft into and out of parking apron and associated taxiways. The pilot-in-command and aircraft marshalls shall be responsible for the safety of the aircraft with respect to all vehicles, persons and other obstructions during engine start up and taxiing
- 4.2 For arrivals, pilots will taxi their aircraft along taxiway A, B, C and proceed to the appropriate parking positions/stands.
- 4.3 ATR72 aircrafts (or equivalent size) are limited to GA Apron only.
- 4.4 Taxiway D and E are limited for helicopters only.
- 4.5 Helicopters will taxi along assigned taxiway and proceed to designated parking stands.
- 4.6 For departures, upon clearance from the Control Tower, pilots will taxi via designated taxiway and proceed to runway for takeoff.

#### **5 IMPLEMENTATION**

- 5.1 The helicopter parking stands are available with immediate effect.

#### **6 CANCELLATION**

- 6.1 This AIP Supplement will remain current until the information is published in AIP Malaysia.

**DATO' SRI AZHARUDDIN ABDUL RAHMAN**  
**Director General**  
**Department of Civil Aviation**  
**Malaysia**

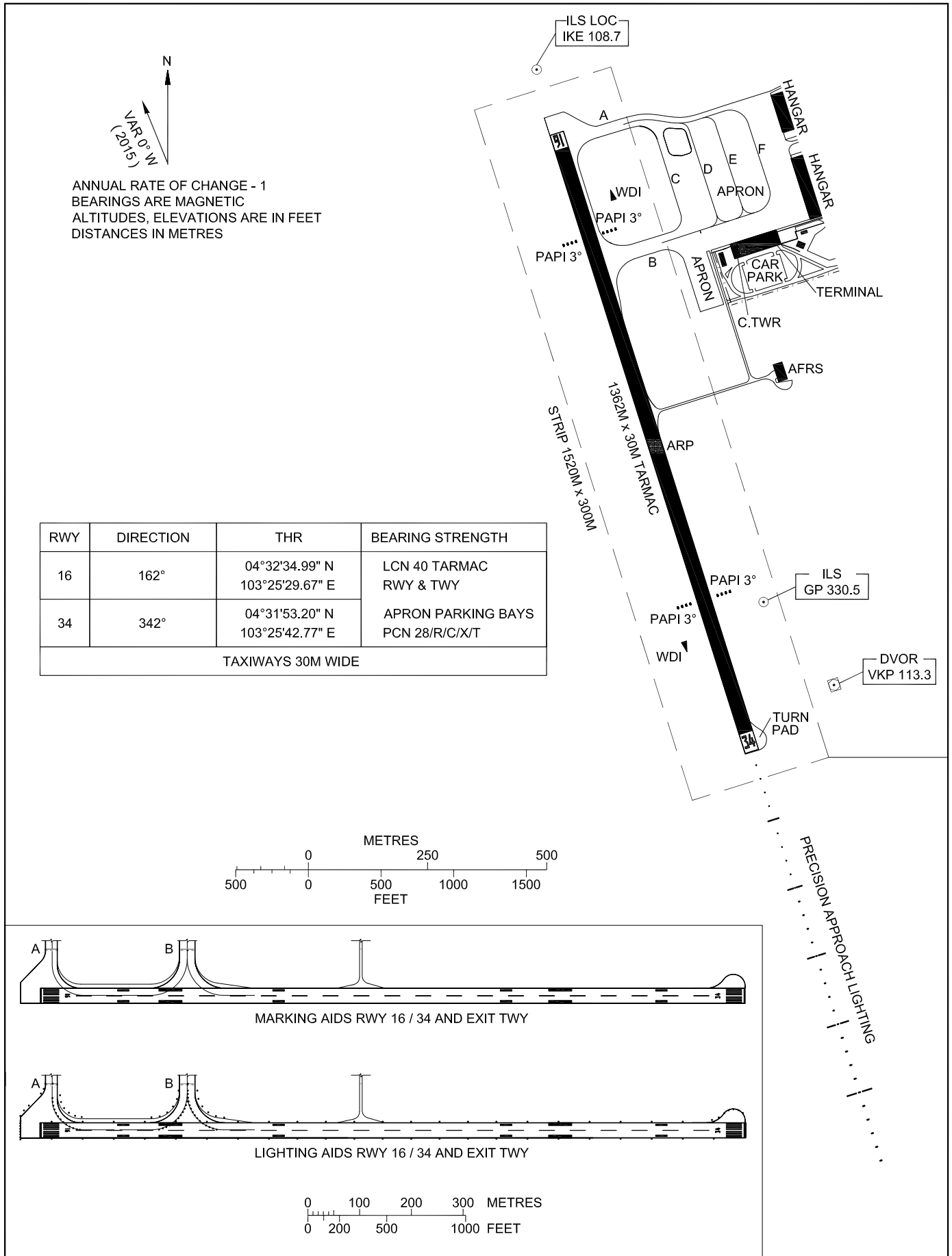
AERODROME CHART - ICAO

ARP 04°32'15"N  
103°25'36"E

ELEV 18 FT.

SMC 121.8  
TWR 123.3, 258.5  
ATIS 128.25

KERTEH AIRPORT



AERODROME PARKING / DOCKING CHART - ICAO

ARP 04°32'15"N  
103°25'36"E

ELEV 18 FT.

SMC 121.8  
TWR 123.3, 258.5  
ATIS 128.25

KERTEH AIRPORT

