

AIP SUPPLEMENT MALAYSIA

PHONE: 6-03-8871 4000
TELEX: PENAWA MA 30128
FAX: 6-03-8881 0530
AFTN: WMKKYAYS
COMM: AIRCIVIL
KUALA LUMPUR

AERONAUTICAL INFORMATION SERVICE
DEPARTMENT OF CIVIL AVIATION
NO. 27, PERSIARAN PERDANA
LEVEL 1-4, PODIUM BLOCK, PRECINCT 4,
62618 PUTRAJAYA,
MALAYSIA

13/2015

14 MAY

AIRAC

KUALA LUMPUR FLIGHT INFORMATION REGION

KL INTERNATIONAL/SEPANG AIRPORT

ATC SURVEILLANCE MINIMUM ALTITUDE CHART (ATC SMA) AND WMR 237

1 INTRODUCTION

- 1.1 The purpose of this AIP supplement is to notify the aviation industry of the modified minimum altitude sector of KL TMA ATC Surveillance Minimum Altitude Chart.

2 ATC SMA CHART AND NEW DETAILS OF WMR237

- 2.1 The new ATC SMA Chart is shown in the Appendix – A. The ATC SMA Chart published on Appendix - B2 AIP SUPPLEMENT 8/1014 dated 20 Feb 2014 is superseded and withdrawn.
- 2.2 The new details of WMR237 are shown in the APPENDIX – B. It shall supersede the detail on WMR237 shown in AIP Malaysia ENR 5.1 - 7.

3 IMPLEMENTATION

- 3.1 This AIP Supplement and the relevant chart will become effective on 25 JUNE 2015

4 CANCELLATION

- 4.1 This AIP Supplement will remain current until the information is published in AIP Malaysia.

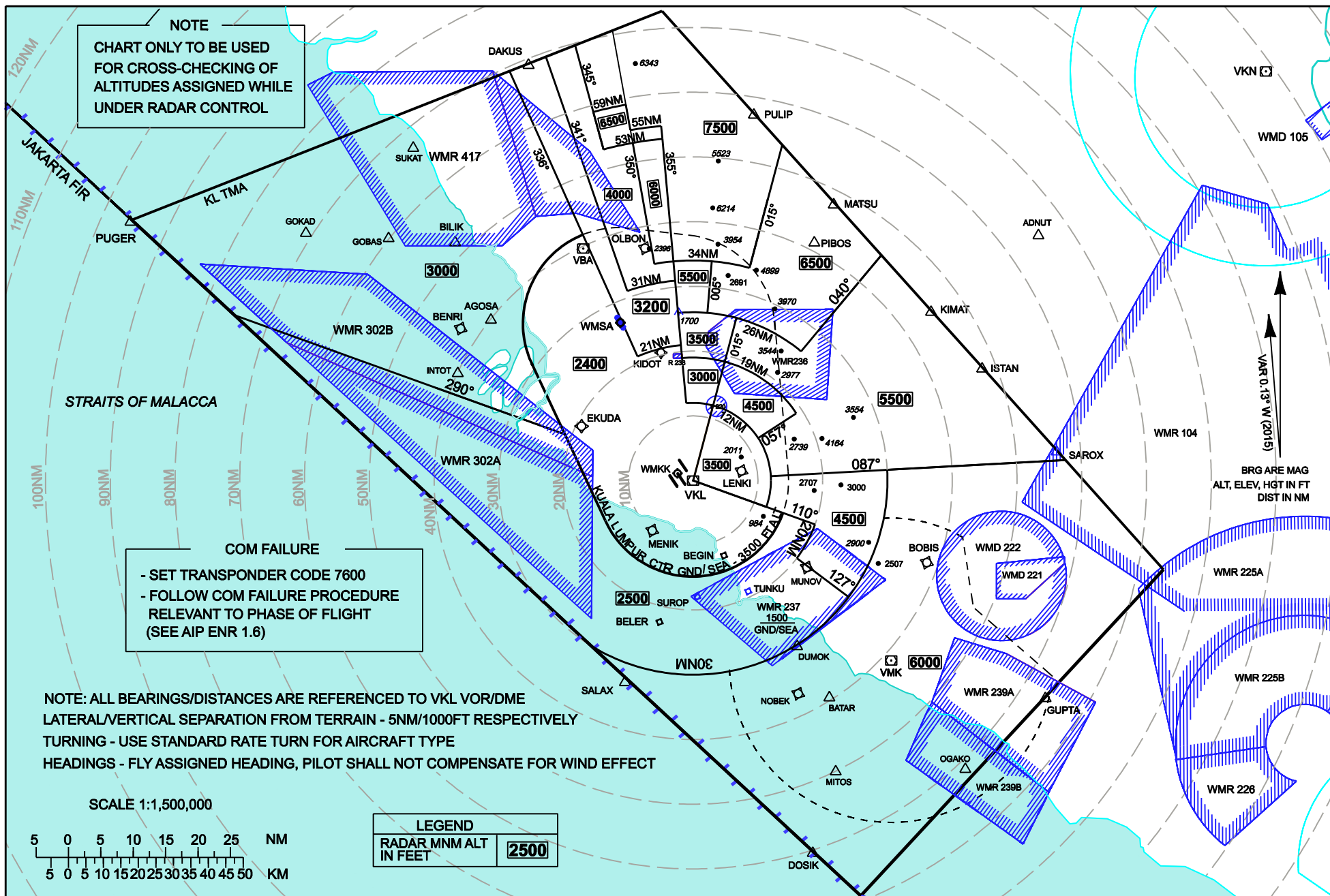
DATO' AZHARUDDIN ABDUL RAHMAN
Director General
Department of Civil Aviation Malaysia

ATC SURVEILLANCE MINIMUM ALTITUDE CHART - ICAO

TRANSITION ALT 11000

KUALA LUMPUR TMA

NOTE
 CHART ONLY TO BE USED
 FOR CROSS-CHECKING OF
 ALTITUDES ASSIGNED WHILE
 UNDER RADAR CONTROL

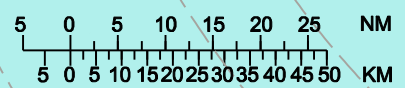


COM FAILURE

- SET TRANSPONDER CODE 7600
- FOLLOW COM FAILURE PROCEDURE RELEVANT TO PHASE OF FLIGHT (SEE AIP ENR 1.6)

NOTE: ALL BEARINGS/DISTANCES ARE REFERENCED TO VKL VOR/DME
 LATERAL/VERTICAL SEPARATION FROM TERRAIN - 5NM/1000FT RESPECTIVELY
 TURNING - USE STANDARD RATE TURN FOR AIRCRAFT TYPE
 HEADINGS - FLY ASSIGNED HEADING, PILOT SHALL NOT COMPENSATE FOR WIND EFFECT

SCALE 1:1,500,000



LEGEND	
RADAR MNM ALT IN FEET	2500

CHANGE: REVISED SURVEILLANCE MINIMA UPPER LIMIT OF WMR 237

ENR 5 NAVIGATION WARNINGS

ENR 5.1 PROHIBITED, RESTRICTED AND DANGER AREAS

PROHIBITED, RESTRICTED AND DANGER AREAS KUALA LUMPUR FIR, KOTA KINABALU FIR AND SOUTH CHINA SEA CORRIDOR			
Identification, Name and Lateral Limits	Upper Limits	Type of Restriction	Remarks
	Lower Limits		
1	2	3	4
WMR237 Straight line fm 023659N 1020325E (Kg. Gam) to 022800N 1021355E (Simpang Ampat) to 021442N 1015625E to 022530N 1014355E to start.	1500 FT ALT <hr/> GND / SEA	Flying Training	Controlling Authority: Malacca Tower - 118.0 MHz Hours of Operation: HJ in VMC only.