

AIP SUPPLEMENT MALAYSIA

PHONE: 6-03-8871 4000
TELEX: PENAWA MA 30128
FAX: 6-03-8881 0530
AFTN: WMKKYAYS
COMM: AIRCIVIL
KUALA LUMPUR

AERONAUTICAL INFORMATION SERVICE
DEPARTMENT OF CIVIL AVIATION
NO. 27, PERSIARAN PERDANA
LEVEL 1-4, PODIUM BLOCK,PRECINCT 4,
62618 PUTRAJAYA,
MALAYSIA

09/2015
19 MAR 2015

AIRAC

KUALA LUMPUR FLIGHT INFORMATION REGION KL INTERNATIONAL / SEPANG AIRPORT STANDARD INSTRUMENT DEPARTURE (SID) RWY 14 R

1 INTRODUCTION

- 1.1 The purpose of this AIP Supplement is to notify the aviation industry of the introduction of SID RWY 14R RIGHT DEPARTURE procedures for KL International / Sepang Airport.

2 INSTRUMENTS FLIGHT PROCEDURE

- 2.1 The SID RWY 14R RIGHT DEPARTURE is shown in the Appendix - A.

3 IMPLEMENTATION

- 3.1 This AIP Supplement and the relevant chart will become effective on 30 April 2015.

4 CANCELATION

- 4.1 This AIP Supplement will remain current until the information is published in AIP Malaysia.

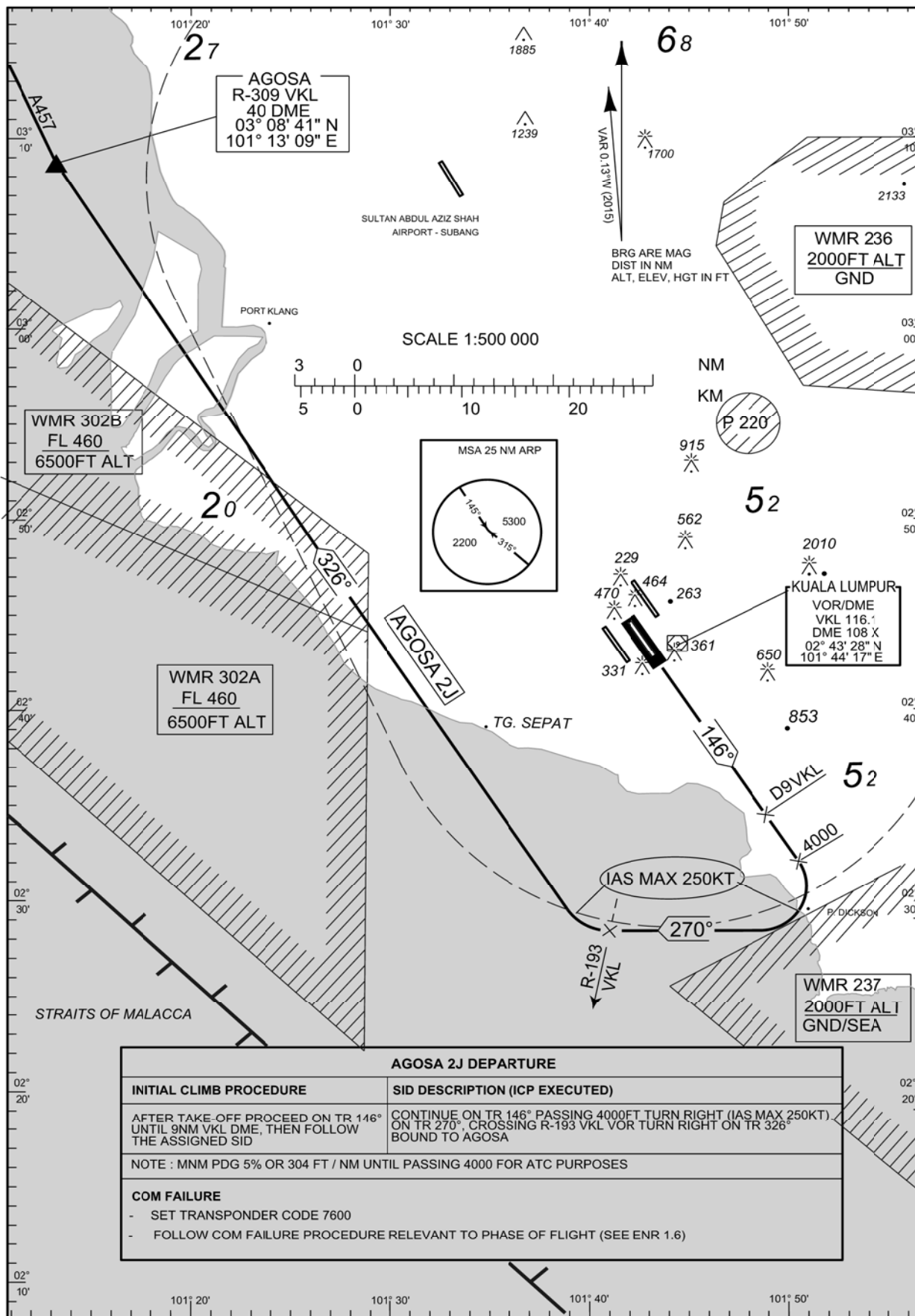
DATO' AZHARUDDIN ABDUL RAHMAN
Director General
Department of Civil Aviation
Malaysia

**STANDARD DEPARTURE CHART
INSTRUMENT (SID) - ICAO**

TRANSITION ALT 11000

FREQUENCIES			
APP	118.650	TWR	118.800
	124.200		118.500
	119.450		119.800
	135.750		
		ATIS	126.250

**SEPANG (WMKK)
KL INTERNATIONAL AIRPORT
RWY 14R
RIGHT DEPARTURE**



AGOSA 2J DEPARTURE	
INITIAL CLIMB PROCEDURE	SID DESCRIPTION (ICP EXECUTED)
AFTER TAKE-OFF PROCEED ON TR 146° UNTIL 9NM VKL DME, THEN FOLLOW THE ASSIGNED SID	CONTINUE ON TR 146° PASSING 4000FT. TURN RIGHT (IAS MAX 250KT). ON TR 270°. CROSSING R-193 VKL VOR TURN RIGHT ON TR 326° BOUND TO AGOSA
NOTE : MNM PDG 5% OR 304 FT / NM UNTIL PASSING 4000 FOR ATC PURPOSES	
COM FAILURE	
- SET TRANSPONDER CODE 7600	
- FOLLOW COM FAILURE PROCEDURE RELEVANT TO PHASE OF FLIGHT (SEE ENR 1.6)	