

# AIP SUPPLEMENT MALAYSIA

PHONE: 6-03-8871 4000  
TELEX: PENAWA MA 30128  
FAX: 6-03-8881 0530  
AFTN: WMKKYAYS  
COMM: AIRCIVIL  
KUALA LUMPUR

AERONAUTICAL INFORMATION SERVICE  
DEPARTEMENT OF CIVIL AVIATION  
NO. 27, PERSIARAN PERDANA  
LEVEL 1-4, PODIUM BLOCK, PRECINCT 4,  
62618 PUTRAJAYA,  
MALAYSIA

07/2015

19 FEB 2015

AIRAC

## ESTABLISHMENT OF NEW RNAV ROUTES M757 AND M769

### 1 INTRODUCTION

- 1.1 The purpose of this AIP Supplement is to notify the establishment of new RNAV routes M757 and M769 within Kuala Lumpur and Bangkok FIRs. The introduction of these routes is to improve safety and efficiency so as to meet demands of current and projected air traffic growth, taking into consideration the evolving technologies in aviation.

### 2 DESCRIPTION OF NEW RNAV ROUTES M757 AND M769

- 2.1 See APPENDIX A for new RNAV routes M757 and M769 details.
- 2.2 See APPENDIX B for chart showing new RNAV routes M757 and M769 details.

### 3 AIR TRAFFIC FLOW MANAGEMENT (ATFM)

- 3.1 See APPENDIX C for flight planning procedure.

### 4 OPERATING PROCEDURE

- 4.1 Operation on these RNAV routes (M757 and M769) requires operators to have operational approval for RNAV 5.
- 4.2 These RNAV routes are applicable under the ATS surveillance environment.
- 4.3 Operators with RNAV 5 operational approval shall insert "/R" in item 10a and "PBN/B1-B6" in item 18 when filing flight plan.

### 5 EFFECTIVE DATE

- 5.1 This AIP Supplement will become effective on 30 April 2015 0001UTC.

### 6 CANCELLATION

- 6.1 This AIP Supplement will remain current until the information is published in AIP Malaysia.

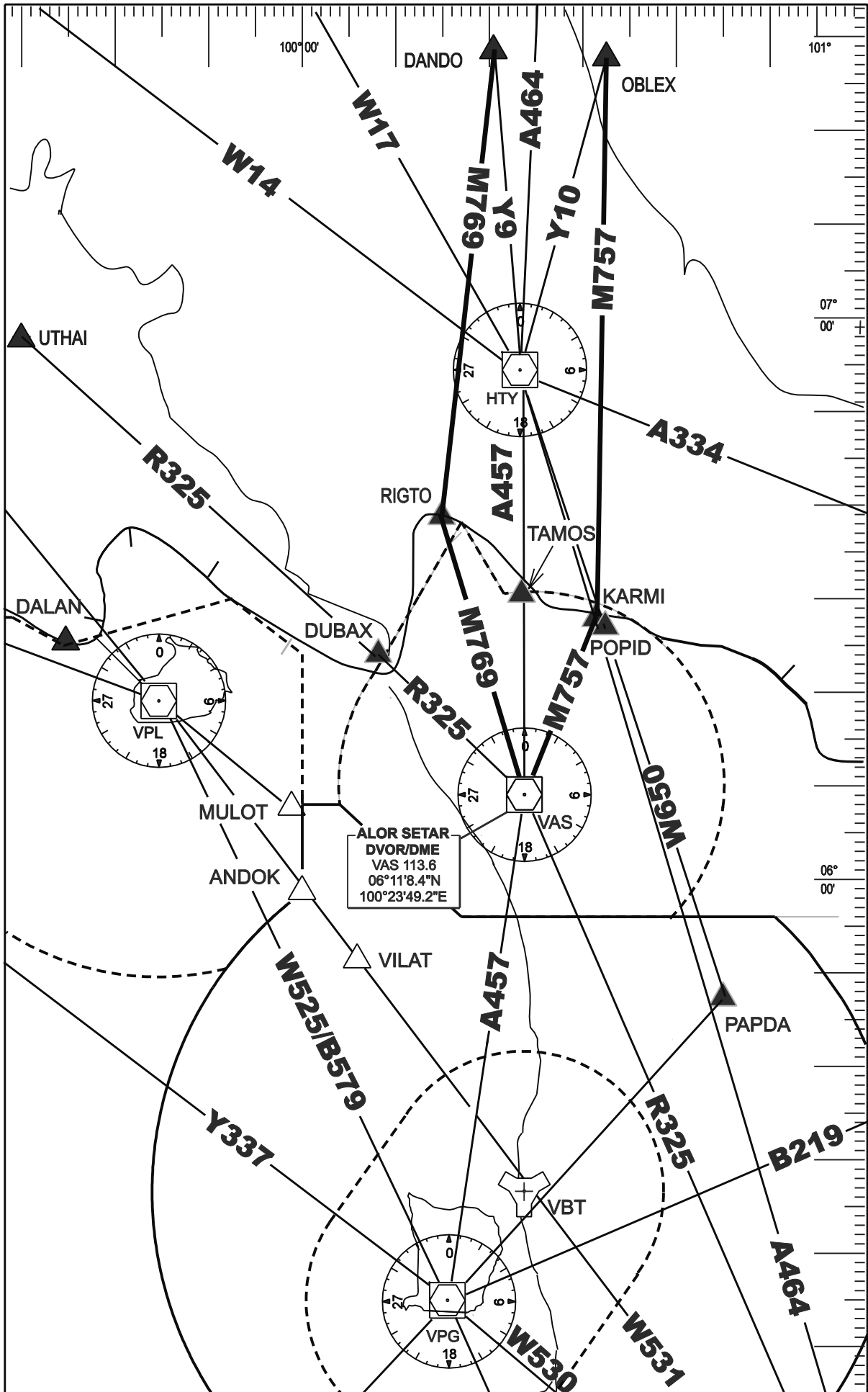
**DATO' AZHARUDDIN ABDUL RAHMAN**  
Director General  
Department of Civil Aviation  
Malaysia

APPENDIX A

Route Designator Significant Points Coordinates	Track (MAG) DIST (NM)	Upper Limits Lower Limits Minimum Flight Altitude Airspace Classification	Lateral Limits (NM)	Cruising Levels		Remarks Controlling Unit
				Odd	Even	
1	2	3	4	5		6
M757 (RNAV 5)						
▲ KARMI (FIR BDRY) 062940N 1003121E	202°	FL 460 10 500 FT ALT	12	↓		<b>Controlling Authority:</b> Kuala Lumpur ACC (P) 132.8 MHz, (S) 133.55 MHz (within Butterworth TMA – Butterworth Radar (P) 125.8 MHz, (S) 128.5 MHz)
▲ ALOR STAR DVOR/DME (VAS) 061108.4N 1002349.2E	20 NM	MNM 11 000 FT				

Route Designator Significant Points Coordinates	Track (MAG) DIST (NM)	Upper Limits Lower Limits Minimum Flight Altitude Airspace Classification	Lateral Limits (NM)	Cruising Levels		Remarks Controlling Unit
				Odd	Even	
1	2	3	4	5		6
M769 (RNAV 5)						
▲ RIGTO (FIR BDRY) 064228.22N 1001504.23E	345°	FL 460 10 500 FT ALT	12	↑		<b>Controlling Authority:</b> Kuala Lumpur ACC (P) 132.8 MHz, (S) 133.55 MHz (within Butterworth TMA – Butterworth Radar (P) 125.8 MHz, (S) 128.5 MHz)
▲ ALOR STAR DVOR/DME (VAS) 061108.4N 1002349.2E	33 NM	MNM 11 000 FT				

**ESTABLISHMENT OF NEW RNAV ROUTES M757 AND M769**



1 **UNI-DIRECTIONAL ROUTING SYSTEM ALONG THE WESTERN PORTION OF PENINSULAR MALAYSIA**

1.1 NORTHBOUND

a) Flights to Destinations Outside Kuala Lumpur FIR

From	Entering Adjacent FIR	Joining Airways or Waypoints	FPL Route
<b>Airports south of WMKM</b>	<b>Bangkok FIR</b>	L759, L515/M770	Y339 GEMAS B466 SUKAT A457 VPG B579 PUT
		M769	Y339 GEMAS B466 SUKAT A457 VAS M769 RIGTO
		A457 (only for non RNAV 5 capable and flights destined to VTSS and VTSG)	Y339 GEMAS B466 SUKAT A457 HTY
<b>WMKK</b>	<b>Bangkok FIR</b>	L759, L515/M770	VKL A457 VPG B579 PUT
		M769	VKL A457 VAS M769 RIGTO
		A457 (only for non RNAV 5 capable and flights destined to VTSS and VTSG)	VKL A457 TAMOS A457 HTY
<b>WMSA</b>	<b>Bangkok FIR</b>	L759, L515/M770	VBA B466 SUKAT A457 VPG B579 PUT
		M769	VBA B466 SUKAT A457 VAS M769 RIGTO
		A457 (only for non RNAV 5 capable and flights destined to VTSS and VTSG)	VBA B466 SUKAT A457 TAMOS A457 HTY

From	Entering Adjacent FIR	Joining Airways or Waypoints	FPL Route
<b>WMKP</b>	<b>Bangkok FIR</b>	L759, L515/M770	VPG B579 PUT
		M769	VPG A457 VAS M769 RIGTO
		A457 (only for non RNAV 5 capable and flights destined to VTSS and VTSG)	VPG A457 TAMOS A457 HTY
<b>WMKL</b>		L759, L515/M770	VPL B579 PUT
		M769	VPL DCT VAS M769 RIGTO
		A457 (only for non RNAV 5 capable and flights destined to VTSS and VTSG)	VPL DCT VAS A457 TAMOS A457 HTY
<b>WMKA</b>		M769	VAS A457 HTY Y9 DANDO M769
		A457 (only for non RNAV 5 capable and flights destined to VTSS and VTSG)	VAS A457 TAMOS A457 HTY

1.2

## SOUTHBOUND

## a) Flights Entering Kuala Lumpur FIR from Adjacent FIR

To	From Adjacent FIR	From Airways or Waypoints	FPL Route
<b>WMKA</b>	<b>Bangkok FIR</b>	A457	HTY A457 TAMOS A457 VAS
<b>WMKL</b>		B579	PUT B579 VPL
		M757	M757 VAS DCT VPL
		A457 (only for non RNAV 5 capable)	HTY A457 TAMOS A457 VAS DCT VPL
<b>WMKP</b>		B579	PUT B579 VPL W525 VPG
		M757	M757 VAS A457 VPG
		A457 (only for non RNAV 5 capable)	HTY A457 TAMOS A457 VPG
<b>WMKI</b>		R325	DUBAX R325 VIH
		M757	M757 KARMI A464 VIH
		A464 (only for non RNAV 5 capable and flights departing from VTSS and VTSG)	HTY A464 KARMI A464 VIH
<b>WMSA</b>		R325	DUBAX R325 VIH A464 VBA
		WMKKM757	M757 KARMI A464 VBA
		A464 (only for non RNAV 5 capable and flights departing from VTSS and VTSG)	HTY A464 KARMI A464 VBA

To	From Adjacent FIR	From Airways or Waypoints	FPL Route
WMKK	Bangkok FIR	R325	DUBAX R325 VIH A464 VKL
		M757	M757 KARMI A464 VKL
		A464 (only for non RNAV 5 capable and flights departing from VTSS and VTSG)	HTY A464 KARMI A464 VKL
WMKJ		R325	DUBAX R325 VIH A464 TOPOR W534 VJB
		M757	M757 KARMI A464 TOPOR W534 VJB
		A464 (only for non RNAV 5 capable and flights departing from VTSS and VTSG)	HTY A464 KARMI A464 TOPOR W534 VJB
Airport in Singapore FIR		R325	DUBAX R325 VIH A464 SJ
		M757	M757 KARMI A464 SJ
		A464 (only for non RNAV 5 capable and flights departing from VTSS and VTSG)	HTY A464 KARMI A464 SJ
Airport beyond Singapore FIR		R325	DUBAX R325 VIH A464 VKL Y341 MITOS M630
		M757	M757 KARMI A464 VKL Y341 MITOS M630
		A464 (only for non RNAV 5 capable and flights departing from VTSS and VTSG)	HTY A464 KARMI A464 VKL Y341 MITOS M630