
AIP SUPPLEMENT MALAYSIA

PHONE : 6-03-8871 4000
TELEX : PENAWA MA 30128
FAX : 6-03-8881 0530
AFTN : WMKKYAYS
COMM : AIRCIVIL
KUALA LUMPUR

AERONAUTICAL INFORMATION SERVICES
DEPARTMENT OF CIVIL AVIATION
NO. 27, PERSIARAN PERDANA
LEVEL 1-4, PODIUM BLOCK, PRECINCT 4,
62618 PUTRAJAYA
MALAYSIA

01 / 2015

30 OCT

AIRAC

KUALA LUMPUR FLIGHT INFORMATION REGION KERTEH AIRPORT

REVISION OF KERTEH CONTROL ZONE AND INTRODUCTION OF ARRIVAL ROUTES/GATES FOR HELICOPTER

1. INTRODUCTION

- 1.1 The purpose of this AIP Supplement is to notify the aviation industry of the revised Kerteh Control Zone and the introduction of Arrival Routes/Gates for helicopters.

2. REVISED KERTEH CONTROL ZONE (CTR)

- 2.1 The details of the new Kerteh Control Zone are as follows and chart in **APPENDIX A**.

1	Designation and lateral limits	Kerteh CTR Commencing clockwise from 042736N 1033746E thence an arc of a circle 13 nautical miles radius centered on the Kerteh ARP 043215N 1032536E to 044450N 1032804E, thence a straight line to 051133N 1033246E, thence an arc of a circle 40 nautical miles radius centered on the Kerteh ARP 043215N 1032536E to 042501N 1040500E, thence a straight line to 042736N 1033746E.
2	Vertical limits	GND Level to 5500 FT
3	Airspace classification	C
4	ATS unit callsign Language(s)	Kerteh Tower English
5	Transition altitude	11000 FT
6	Remarks	Nil

3. INTRODUCTION OF ARRIVAL ROUTES/GATES FOR HELICOPTER

3.1 Three standard arrival routes/gates are established for the orderly arrival of helicopters from the oil rigs over the seas as follows:

<u>Name of Gates</u>	<u>Coordinates of Gate Entry Position</u>
XODEP	044455.0N 1032412.8E
NIVEG	050646.1N 1034551.0E to BIXAT
DAGNO	043855.6N 1040515.5E to KILUX

3.2 Arriving helicopters from the sea shall enter the Kerteh CTR via the designated arrival gate unless directed otherwise by ATC. ATC may direct inbound helicopters to enter the Control Zone via specific VOR radial should the need arise to provide separation from outbound traffic. The arrival gates and routes are shown in **APPENDIX B**.

4. IMPLEMENTATION

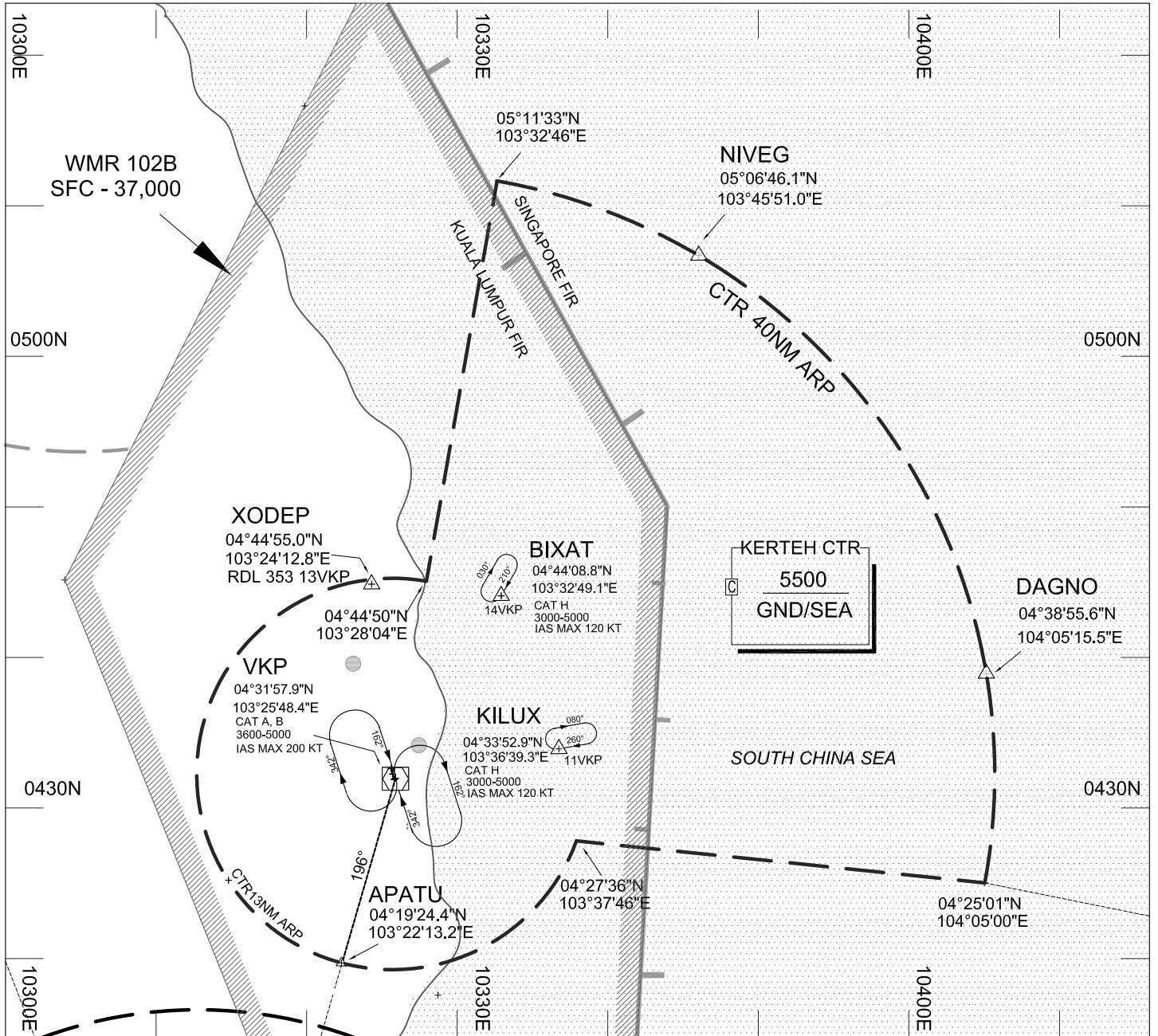
4.1 This AIP Supplement will become effective on 08 January 2015. A trigger NOTAM will be issued.

5. CANCELLATION

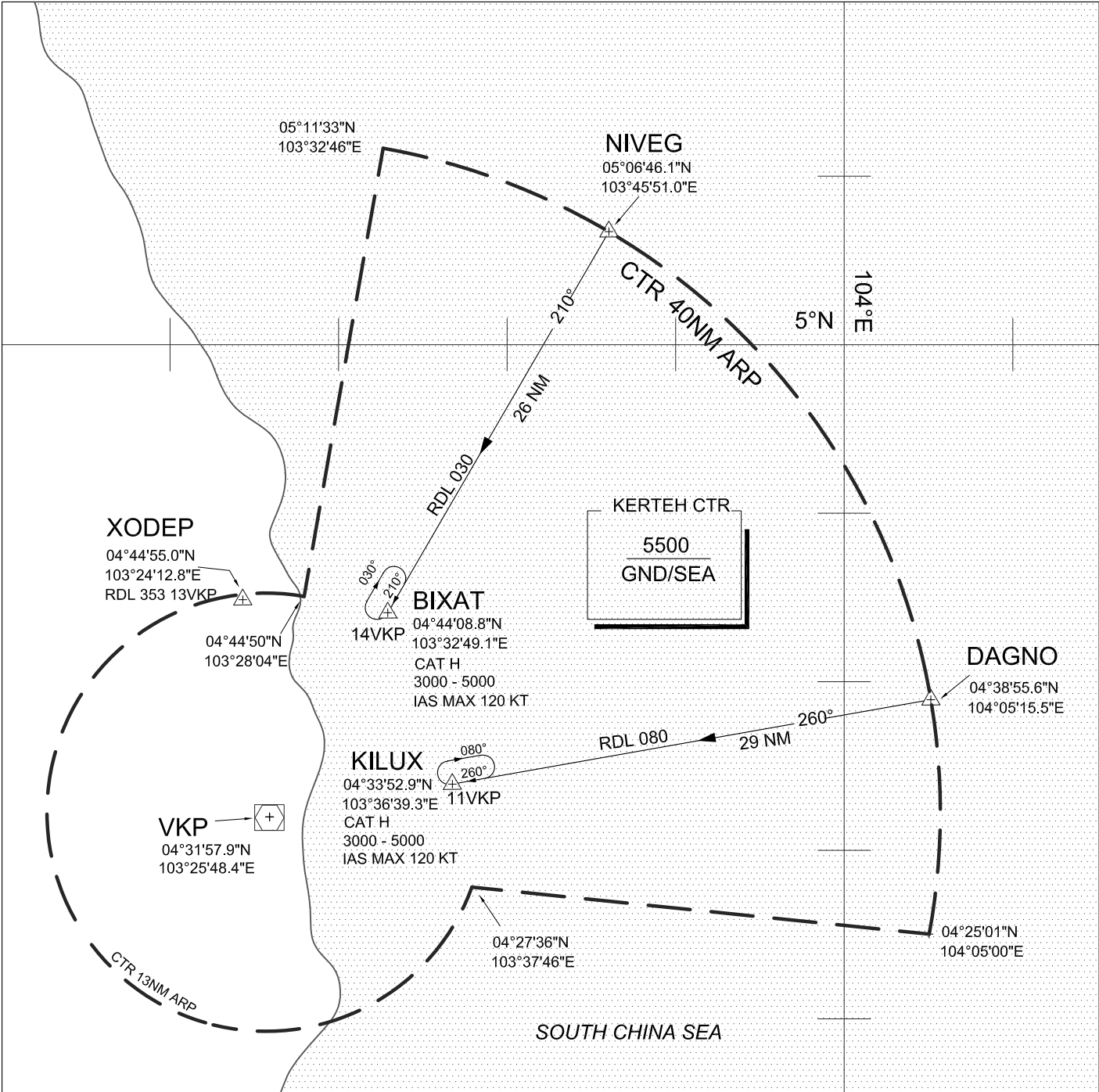
5.1 This AIP Supplement will remain current until the information is published in AIP Malaysia.

DATO' AZHARUDDIN ABDUL RAHMAN
Director General
Department of Civil Aviation
Malaysia

KERTEH CTR & HOLDING AREAS



HELICOPTER ARRIVAL GATES/ROUTES



HELICOPTER ARRIVAL GATES / ROUTES

NAME OF GATE	COORDINATES OF GATE	ROUTE
1. XODEP	04°44'55.0"N 103°24'12.8"E (RDL 353/13DME VKP)	TRACK 173°/RDL 353 TO XODEP/13DME VKP
2. NIVEG	05°06'46.1"N 103°45'51.0"E (RDL 030/40DME VKP)	TRACK 210°/RDL 030 TO BIXAT/14DME VKP
3. DAGNO	04°38'55.6"N 104°05'15.5"E (RDL 080/40DME VKP)	TRACK 260°/RDL 080 TO KILUX/11DME VKP